

Charlotte

NOVEMBER/DECEMBER 2023

# HOWE

DESIGN & DECOR®

THE  
COZY  
ISSUE

PLUS:  
GIFTED

FLASHES OF  
BRILLIANCE



# // WELCOME

to Dell Anno,  
custom kitchens and closets  
to enhance your lifestyle.

Dell Anno  
CHARLOTTE

Address: 1400 Westinghouse Boulevard suite 100,  
Charlotte, NC 28273.  
Phone: +1 704 453-5463  
[www.dellanno.com](http://www.dellanno.com) @dellannocharlotte

CALIFORNIA | FLORIDA



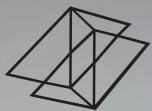


FLORIDA | ILLINOIS | MASSACHUSETTS | NEW YORK | VIRGINIA | BRAZIL | CANADA | PORTUGAL | PUERTO RICO

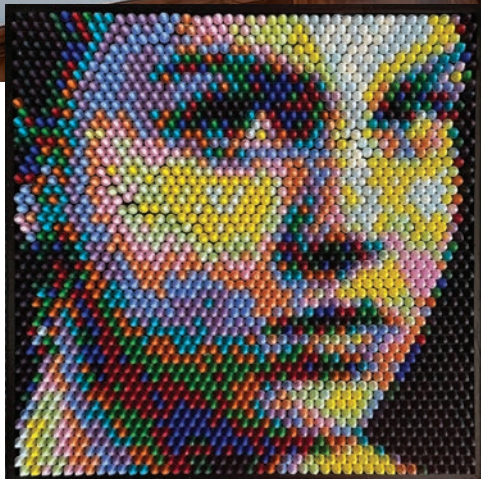


Dell'Anno



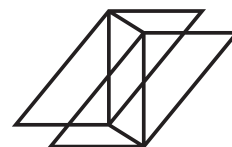


MOMENTUM  
GALLERY



Christian Faur

© Chilhuly 2023  
Laguna Persian Studio Edition



MOMENTUM  
GALLERY

DOWNTOWN ASHEVILLE

Paintings | Sculpture | Original Prints | Studio Furniture

MOMENTUM GALLERY offers a curated collection of museum quality works that celebrate material-based traditions rich in this area and reflect a contemporary aesthetic in harmony with our natural surroundings.

52 Broadway | 828.505.8550 | [momentumgallery.com](http://momentumgallery.com)

[f momentumgalleryasheville](#) [@momentumgallery](#)



Samantha Keely Smith



*Installs Everywhere.*

**CHANGES EVERYTHING**



  
**General Shale Brick®**

Call or visit today  
704-599-2877  
10800 Reames Road, Charlotte, NC 28269



Scan to learn more at:  
[generalshale.com/old-brick-originals](http://generalshale.com/old-brick-originals)







**Queen City Audio Video & Appliances is the best resource for all your appliance, electronics, and outdoor kitchen needs with over 70 brands to choose from.** Our dedicated builder, customer service, and delivery teams have over a decade of experience with new builds and renovations. Feel confident that our experts can look at your blueprints and help you select the right appliances to fit your design and personal style.





**Stunning and subtle.** Both are possible with the combination of a great design, custom cabinetry, and the right appliances.

This is a cook's kitchen from every angle. The custom-made hood and 48" Wolf dual fuel range are the "stunning" focus of this design. With two ovens, six gas burners, and a griddle, entertaining is a breeze. The ovens' Dual VertiFlow™ convection ensures perfect multi-rack cooking and features ten chef-tested modes. You can even customize the look with different knob and bezel colors. The surrounding Cabico cabinetry in Hollow White helps these items take center stage.

To add some contrast to the space, we opted for Cabico's Svelte for the island and bar cabinet color.

Two Sub-Zero units were chosen to provide maximum food and beverage storage. The kitchen's 48" refrigerator/freezer is paired with a 30" dual-zone wine fridge with refrigerator drawers at the bar. There is room for whites, reds, beer, soft drinks, and anything else that strikes your fancy. To give the appliance a "subtle" appearance in the bar, we chose custom panels to match the surrounding cabinetry. We also opted for appliance pulls to match the cabinetry hardware.

The island features a 4' workstation with 12" DryDock by The Galley. It is a dream for meal prep and cleanup. We customized the drawers to make use of every inch of space. With a double trash pull-out on one side and a dishwasher on the other, you are truly at the center of everything.

DesignLoft's experienced designers, custom cabinetry, and The Galley Workstation provide endless possibilities. We work with individual homeowners, builders, and interior designers.

With cabinetry from DesignLoft and appliances from Queen City, bring your ideas and let's make your dreams a reality.

PHOTOGRAPHY BY DUSTIN & SUSIE PECK  
STYLING BY KENDRA SURFACE



VISIT [QUEENCITYONLINE.COM](http://QUEENCITYONLINE.COM) TO LEARN MORE.  
MONDAY–SATURDAY: 9 A.M. TO 7 P.M. | SUNDAY: 12 P.M. TO 6 P.M.



VISIT [DESIGNLOFTCABINETS.COM](http://DESIGNLOFTCABINETS.COM)  
2914 SELWYN AVE., CHARLOTTE, NC 28209





# The Designers Marketplace

---

trade and retail showrooms

803-681-5100

[thedesignersmarketplace.com](http://thedesignersmarketplace.com)

9481 Yarborough Road, Fort Mill, SC 29707







# NOVEMBER/DECEMBER 2023



## FEATURES

### 42 FLASHES OF BRILLIANCE

Designer Traci Zeller uses a home's flashes of brilliance to create a design true to her clients.

### 54 MOUNTAIN MAJESTY

A community in Cashiers, North Carolina, beckons one couple to retreat in ultimate style.

### 64 SHAPE SHIFTER

Ro House Studio shifts the weights in a home to unlock untapped beauty.





ARTWORK FROM HIDELL BROOKS

# COLEY HOME

MADE IN NORTH CAROLINA

VISIT OUR CHARLOTTE SHOWROOM • 2132 THRIFT ROAD, SUITE C

VISIT US ONLINE • [COLEYHOME.COM](http://COLEYHOME.COM)



# NOVEMBER/DECEMBER 2023



## DWELL

### 21 GIFT GUIDE

This season's gift guide showcases our curated selection of gifts alongside stunning new designer products.

### 32 DESIGN

Designer Laura Aguilar creates a cozy haven for gathering in Banner Elk, North Carolina.

### 36 FIELD TRIP

Cashiers, North Carolina, offers the ultimate escape for cooler months, and High Hampton Inn provides a stylish respite.

### 38 DESIGN BOARD

Beverly Allen Interiors highlights what makes her long-standing firm a mainstay in Charlotte.

## RESOURCES

### 76 HOLIDAY READY

A. Hoke Ltd. helps designers get homes ready to host for the holidays.

### 78 HANDCRAFTED HEIRLOOMS

Handcrafted rugs are art for your floors, and Artisan Rug Gallery provides one-of-a-kind masterpieces.

### 80 HEAVY LIFTING

Cox Door Company highlights its ultimate offerings in form and function.

### 82 POOLS, UNPARALLELED

Blue Haven Pools & Spas designs bespoke pools sure to enhance your outdoor experience.

## CONTRIBUTOR

### 86 ROOM SERVICE

Beth Conant Keim  
Staking A Claim

## SPOTLIGHT

### 14 FROM THE EDITOR

### 90 SCENE + SEEN

### 92 ARTS & EXHIBITIONS





HELEN ADAMS REALTY

*Serving Our Charlotte Neighbors Since 1975*

Woman Founded. Family Owned. Locally Operated.



[helenadamsrealty.com](https://helenadamsrealty.com) | [@helenadamsrealty](https://www.instagram.com/helenadamsrealty)





As we get older, time becomes a bit arbitrary. It simultaneously moves at the speed of light while dragging on to the same distant drum beat. One day we're admiring how quickly our magnolias bloomed and the next, we're anxiously awaiting the start of a new school year; meanwhile, Christmas is only days away.

It's a roller-coaster of days, weeks, and months as we move through the seasons of life, and the only constant is that it's all precious; every slow and fleeting moment is precious. Our annual gatherings issue is intended to celebrate each of these moments through an expression of design, and giving, and gathering, and enjoyment.

Everything that makes life treasurable is a manifestation of something people produce, and we've put it into context in these pages. From retreating to the mountains for an ultra-stylish getaway, or, better yet, a family gathering, to drawing inspiration from skilled artisans in your gift-giving, we hope this issue brings you immense comfort and joy.

*Blake & Anne Marie*

Blake Miller and Anne Marie Ashley  
Co-Editors-in-Chief

**ON THE COVER:**  
Designer Allan Chapman pulls the charm and coziness of the North Carolina mountains into this Cashiers home (page 54).



PHOTOGRAPH: DAUREN GRAHAM; PHOTOGRAPHY: DUSTIN AND SUSIE PECK



# COX DOOR COMPANY

HOME | COMMERCIAL | RESIDENTIAL | SALES | SERVICE



Cox Door is 35 years in the Charlotte market. We stand behind each and every door, install, service and preventative maintenance that we do. With great craftsmanship comes great responsibility. This is why we also stand behind the quality accessories that are part and parcel of these great doors. We fix, maintain, source and install any door or part that you need. From coils, to openers, advice of maintenance; call us and we will send our experts in the field to you.

COXDOOR.COM | 704-821-8898 EXT. 213 | PHILCOX@COXDOOR.COM



# HOME

## DESIGN & DECOR

homedesigndecormag.com

NOVEMBER/DECEMBER 2023

VOL 23 NO 6

### CO-EDITORS-IN-CHIEF

ANNE MARIE ASHLEY  
BLAKE MILLER

### ASSOCIATE EDITOR

KARIN SIMONEAU

### ART DIRECTOR

LINDSAY RICHARDS

### PUBLISHER

MICHAEL KOOIMAN

### ASSOCIATE PUBLISHER

OONAGH MURRAY

### PRODUCTION COORDINATOR

SHELLEY KEMPER

### CONTRIBUTOR

BETH CONANT KEIM

### WRITERS

RHETTA CLOYD  
MARIA MASTERS  
BRANDY WOODS SNOW

### PHOTOGRAPHY

HEATHER ISON  
DUSTIN AND SUSIE PECK  
LAURA SUMRAK  
BRIE WILLIAMS

### PHONE

704-741-2774



facebook.com/CharlotteHDD



@homedesigndecor\_charlotte

All contents copyright 2023, Curated Media, LLC. No part of this publication may be reproduced in whole or in part without the express written consent from publisher. Mention of any product or service does not constitute endorsement from Home Design & Decor® Magazine. The information contained in this publication is deemed reliable from third party sources, but not guaranteed. Curated Media, LLC does not act as an agent for any of the advertisers in this publication. It is recommended that you choose a qualified remodeling, home furnishings or home improvement firm based on your own selection criteria.

Curated Media, LLC, d.b.a. Charlotte Home Design & Decor® Magazine, will not knowingly accept advertising for real estate which is a violation of the Fair Housing Act. All real estate advertising in Curated Media, LLC, d.b.a. Charlotte Home Design & Decor® Magazine, is subject to the Fair Housing Act which states "We are pledged to the letter and spirit of U.S. policy for the achievement of equal housing opportunity throughout the nation. We encourage and support an affirmative advertising and marketing program in which there are no barriers to obtaining housing because of race, color, religion, sex, handicap, familial status, or national origin."

Curated Media, LLC, d.b.a. Charlotte Home Design & Decor® Magazine, does not act as an agent for any of the realtors or builders in this publication. It is recommended that you choose a qualified realtor to assist you in your new home purchase.



Hand  
painted  
lucite  
accessories



BOW TIE



ASIAN MOTIF



SUNNY



STANDOUTCREATIVEDESIGN.COM

Backplates for hardware | LUCITE LITTLEs  
Custom work available



LUCITE BAR BACKSPLASH





*Imagine your home, **BEAUTIFULLY ORGANIZED.***



*Schedule a free in-home design consultation. | 704-741-8013 | [closetsbydesign.com](https://www.closetsbydesign.com)*

**40% off plus 10% extra on orders of \$1,000 or more.**

12 months financing. Offer Valid until June 30. Restrictions apply.





DESIGN FOR YOUR LIFE'S JOURNEY



COLOR, LIGHT,  
PATTERNS AND  
NATURE DEEPEN  
THE CONNECTION  
YOU HAVE WITH  
YOUR HOME.



CLARKANDCLARKINTERIORS.COM  
CHARLOTTE, NC









#### THE HARKEN VANITY

KOHLER® vanities balance modern and traditional influences to create pieces that resonate within the space. The signature designs are unmistakably Kohler and set the tone for the overall design of any bathroom. The Harken vanity was inspired by earlier American design movements but decidedly modern in its minimalist ornamentation. Soft industrial style hardware plays up a contemporary touch.

Learn more about Harken Vanity at [KOHLER.com](https://www.kohler.com) or at your local The Majestic Bath.

THE BOLD LOOK  
OF **KOHLER®**



# GIFTED

OUR COMPENDIUM OF STYLISH GIFTS ARE SHOWCASED IN A COLOR STORY WITH SOME OF THE NEWEST DESIGNER PRODUCTS.

PRODUCED AND STYLED BY ASHLEY HOTHAM COX | PHOTOGRAPHED BY BRIE WILLIAMS



**Backdrop:** Whitman Deco Field Tile in Juniper Crackle and Custom Chateau Grout / price upon request / [rentile.com](http://rentile.com). Silvia Furmanovich Hand-Painted Japanese Ceramic Earrings in 18k Yellow Gold with Diamond Pave and Dravite Tourmaline / \$12,980 / [tinygods.com](http://tinygods.com). Brass Magnifying Glass and Letter Opener Set / \$75 / [bdjeffries.com](http://bdjeffries.com). Custom Engraved Stationery with Envelope Lining / price upon request / [arzbergerstationers.com](http://arzbergerstationers.com). Apothecary 18 Eau de Toilette Night Gardenia / \$72 / [anthropologie.com](http://anthropologie.com). Addison Weeks Bixby Cuff / \$260 / [shopabodehomedesign.com](http://shopabodehomedesign.com).



## GREEN



Backdrop: Palm I Framed Mural / \$1,524 / [shopabodehomedesign.com](http://shopabodehomedesign.com). VIS-À-VIS Paris French Cocktail Napkins / \$295 for set of 4 / [trunberg.com](http://trunberg.com). Silvia Furmanovich Green Gem Marquetry Jewelry Box / \$1,650 / [tinygods.com](http://tinygods.com). Amber Bowl / \$138 / [circainteriors.com](http://circainteriors.com). ester & erik Taper Candles in Wasabi / \$22 for a pair / [circainteriors.com](http://circainteriors.com). Mignonne Gavigan Capri Medallion Necklace / \$150 / [neimanmarcus.com](http://neimanmarcus.com). L'Objet x Haas Brothers Limited Edition Napoleon Fish Vessel / \$4,000 / [elizabethbruns.com](http://elizabethbruns.com). Chamberlain Flutes / \$64 for set of 4 / [anthropologie.com](http://anthropologie.com). Picasso Landscapes: Out of Bounds / \$45 / [store.mintmuseum.org](http://store.mintmuseum.org). Stephen Sills: A Vision for Design / \$65 / [barnesandnoble.com](http://barnesandnoble.com).





LILLIAN AUGUST  
FINE FURNITURE

for  
HICKORY WHITE.



A. H O K E L T D

## DESIGN FOR THE TRADE

CHARLOTTE 2122 Freedom Drive, Suite A, Charlotte, NC 28208, 704.358.0277  
RALEIGH 1405 Capital Blvd., Raleigh, NC 27603, 919.832.5555

A H O K E L I M I T E D . C O M



## PURPLE



**Backdrop:** Flock Northmore Rug by Floor Story / price upon request / [coutureknots.com](http://coutureknots.com). Chinoiserie Mural Panel / \$798 / [shopabodehomedesign.com](http://shopabodehomedesign.com). Leon Löwentraut: Painting for Passion by Albrecht Behmel / \$170 / [bdjeffries.com](http://bdjeffries.com). Garden Glory Watering Can / \$90 / [diel.design.com](http://diel.design.com). Furbish Studio Needlepoint Pillow / \$110 / [papertwist.com](http://papertwist.com). Flowerpot VP9 Portable Dark Plum Table Lamp by Verner Panton for &Tradition / \$315 / [elizabethbruns.com](http://elizabethbruns.com). Poppy Scarf Necklace / \$575 / [mignonnegavigan.com](http://mignonnegavigan.com). Shiitake Ottoman in Casual Lavender with Ringo Plum Contrast Top / \$550 / [coleyhome.com](http://coleyhome.com). Persian Fritillaria Plant by The Green Vase / \$420 / [thegreenvase.com](http://thegreenvase.com). Green Wolf Studio Murano Glass Table Lamp / \$475-\$495 / [rrunberg.com](http://rrunberg.com).





## *Simply the Best...*

*Sophisticated, fashionable yet comfortable interiors with YOU in mind • Modern and Transitional designs for your home or office  
• Fabrics, custom upholstered furniture, custom drapery and window shades, lighting, rugs, bed linens, case goods, original artwork, reupholstery, pillows and accessories • No design fees with purchase • Free local delivery • Day and evening appointments available*

**Thank you for 27 years in business!**

**CRAZY JANE'S**

2502 Dunavant Street, South End, Charlotte, NC 28203  
704-332-5454 | crazyjanesinc.com



## ORANGE



**Backdrop:** Wayne Pate x Studio Four NYC Gio Stripe Wallpaper / \$72.50 per yard / [studiofournyc.com](http://studiofournyc.com). Sol Coupes / \$30 for set of 2 / [canyonandcoastco.com](http://canyonandcoastco.com). Architectural Fragment Base / \$145 / [slateinteriors.com](http://slateinteriors.com). Sunset Carved Dish / \$48 / [canyonandcoastco.com](http://canyonandcoastco.com). Mushrooms Desk Cup / \$225 / [johnderian.com](http://johnderian.com). Soriya Fan / \$24 / [jaysonhome.com](http://jaysonhome.com). Small U Vase / \$98 / [shopabodehomedesign.com](http://shopabodehomedesign.com). Leather Pens / \$40 each / [papertwist.com](http://papertwist.com). Bellerby Blood Moon Pocket Globe on Aero Copper Base / \$1,995 / [runberg.com](http://runberg.com). Mignonne Gavigan Acorn Drop Earrings / \$250 / [neimanmarcus.com](http://neimanmarcus.com).





# **CRAFT ACROSS** CONTEMPORARY JAPANESE **CONTINENTS** AND WESTERN OBJECTS

## THE LASSITER/FERRARO COLLECTION

DECEMBER 9, 2023–MAY 5, 2024 | THE MINT MUSEUM

**MINT  
MUSEUM  
AUXILIARY**

**Moore&VanAllen**



*Craft Across Continents — Contemporary Japanese and Western Objects: The Lassiter/Ferraro Collection* is generously presented by the Mint Museum Auxiliary, with additional corporate sponsorship from Moore & Van Allen. Individual sponsorship is kindly provided by Rocky and Curtis Trenkelbach. The Mint Museum is supported, in part, by the Infusion Fund and its generous donors. IMAGE: Honda Shōryū 本田聖流 (Japanese, 1951–). *Shadow* (detail), 2005, bamboo and rattan. Promised Gift of Lorne Lassiter and Gary Ferraro. PG2022.57.5

Mint Museum Uptown at Levine Center for the Arts | 500 South Tryon Street, Charlotte, NC 28202 | 704.337.2000 | [mintmuseum.org](http://mintmuseum.org) | [@themintmuseum](https://www.instagram.com/themintmuseum)



## BLUE



Backdrop: Wayne Pate x Studio Four NYC Fiore Wallpaper / \$72.50 per yard / [studiofournyc.com](http://studiofournyc.com). Carla Llanos Flowers #13 Print / \$138 / [cotswoldmarketplace.com](http://cotswoldmarketplace.com).

Addison Ross Scalloped Tray / \$118 / [elizabethbruns.com](http://elizabethbruns.com). Lorna Murray Mini Tropez Tote Bag / \$186 / [veronicabeard.com](http://veronicabeard.com). Calm Sea Marble Vase Set / \$365 / [bedsidemanor.com](http://bedsidemanor.com).

Plus-Plus-Inspired The Great Wave by Katsushika Hokusai Puzzle / \$19.99 / [barnesandnoble.com](http://barnesandnoble.com). Irina Bowl / \$58 / [jasonhome.com](http://jasonhome.com).



# GATHER

VERONICA DAVILA



OPENING RECEPTION | NOVEMBER 9<sup>TH</sup> | 6 - 8 PM

ANNE NEILSON FINE ART

[info@anneneilsonfineart.com](mailto:info@anneneilsonfineart.com) | 704.496.9181 | [anneneilsonfineart.com](http://anneneilsonfineart.com)

721 Governor Morrison St, Charlotte, NC 28211



## PINK



Backdrop: Donghia Hear Me Roar in Sahara / to the trade / [kravet.com](http://kravet.com). Cire Trudon Tuileries Diffuser / \$250 / [cira interiors.com](http://cira interiors.com). Julie Vos Statement Necklace / \$345 / [granville-charlotte.com](http://granville-charlotte.com). Queen Charlotte Candle / \$160 / [rrunberg.com](http://rrunberg.com). River Clam Bowl / \$18 / [jaysonhome.com](http://jaysonhome.com). Robert Haviland & C. Parlon Daphne Tea Cup and Saucer / \$185 / [elizabethbruns.com](http://elizabethbruns.com). Paul Arnhold Coral with White Strokes Vase / \$650 / [tinygods.com](http://tinygods.com). Vasily Kandinsky: Around the Circle / \$45 / [anthropologie.com](http://anthropologie.com). Wonderland: Adventures in Decorating by Summer Thornton / \$45 / [isabellastyle.com](http://isabellastyle.com). Maison Maison Design x Zafferano Collection Pink Marble Shade / \$68 / [maisonmaisondesign.com](http://maisonmaisondesign.com). Zafferano Poldina Pro Lamp / \$169 / [maisonmaisondesign.com](http://maisonmaisondesign.com).





abode

CHARLOTTE - BANNER ELK - KEY LARGO  
ABODEHOMEDESIGN.COM | 704.332.3731  
@MARYTOBIASMILLER - @ABODE BYMTM





The basement area houses game tables ideal for entertaining and active kids. The chandelier is from Shades of Light and the table is by Woodland Creek's Log Furniture Place.

# *Almost* HEAVEN

A FAMILY'S BANNER ELK VACATION HOME IS TRANSFORMED INTO A COVETED SPACE FOR GATHERINGS OF ANY SIZE.

WRITTEN BY KARIN SIMONEAU





The landing is a cozy spot for coffee or a book with little ones. An extra wide Crate & Barrel chair is layered with a Pottery Barn throw. The open bookshelf is from Uttermost.

Bringing a family's dream home to life was truly a gift for designer Laura Aguilar. Nestled amongst the Blue Ridge Mountains in Banner Elk, the 4,500-square-foot vacation home required interiors befitting the stunning landscape. With four kids ranging in age from three to thirteen, the homeowners called on Aguilar to design a home that is equal parts stylish and kid-friendly, and, above all else, cozy.

Having worked with the homeowners on a previous project, no learning curve was needed. "With every room capturing views of the Blue Ridge Mountains, we wanted to complement them at every turn" she says. Aguilar looked to natural finishes and layered textures to create a cozy, log-cabin vibe absent of kitschy-themed rooms and furnishings. Floors and ceilings feature organic touches such as reclaimed wood while the floor-to-ceiling fireplace features natural stone. In the guest bedroom, a tree mural wallcovering by Limitless Walls mirrors the expansive view while custom log beds from Woodland Creek's Log Furniture Place create a cabin-like feel.

One of Aguilar's favorite spaces to furnish was the owner's bedroom, and the design approach was similar to the public living spaces. Featuring a vaulted ceiling with reclaimed-wood beams along with a reclaimed-wood accent wall, the room boasts extra-large windows that draw the outside in. A statement-making iron branch chandelier by Currey & Company completes the cozy cabin aesthetic.

Aguilar loved furnishing every inch of the custom home, making sure each detail flowed together, knowing she was bringing a dream project to life. When not enjoying holidays or weekends at their mountain retreat, aptly named Almost Heaven, the homeowners convert it into a rental property garnering five-star reviews. Says Aguilar, "You really do feel like you are in heaven. It's fun to know that anyone can enjoy this spectacular space with amazing views." ♦



**TOP:** The family room features custom metal railings, performance fabrics, and natural leathers, all durable yet welcoming. Built-in cabinetry is by High Country Cabinets and antique oak flooring is from Southend Reclaimed. The chandelier is from RH.

**BOTTOM:** Filled with soft textures and velvet bedding, the guest room touches all of the senses. The mural wallcovering is by Limitless Walls and the log beds are by Woodland Creek's Log Furniture Place.



"CURATING MOMENTS THAT  
WILL LAST *A LIFETIME*"



HANDLEY HOME  
INTERIORS

WWW.HANDLEYHOMEINTERIORS.COM |

704-467-9920





## Porcelain, the New Marble.

We're 100% dedicated to the fabrication and installation of large-format porcelain (63"x126").



**START TODAY!**

Scan here for a free  
in-home consultation

2745 Whitehall Park Drive, Suite 400, Charlotte, NC 28273  
704.910.4948 | [modernoworks.com](https://modernoworks.com)



# *Remote* Possibilities

THIS SECLUDED TOWN IN THE BLUE RIDGE  
MOUNTAINS SERVES AS THE ULTIMATE  
ESCAPE FROM REALITY.

WRITTEN BY **BLAKE MILLER**



The pond at High Hampton Inn.

COURTESY OF HIGH HAMPTON INN





High Hampton Inn Guest Suite

Those who are very familiar with the cozy mountain town of Cashiers also know that the peak is worth the climb.

Located in the Blue Ridge Mountains, Cashiers' remote setting is one of its biggest draws. Its location, coupled with a small-town feel, makes Cashiers the ultimate escape from reality. (Even Charlotte native and model Brooklyn Decker and her husband, tennis star Andy Roddick, built a home in Cashiers.)

Rent a guest cottage at **High Hampton Inn**, a popular destination for Southerners since it opened in 1933. The historic property was acquired by the owners of famed Blackberry Farm in Tennessee in 2021. And what followed was an interior upgrade that maintained High Hampton's rustic charm while modernizing its overall aesthetic. The small but mighty tweaks to the decor, the dining, and the grounds elevated the Inn's one-time campy feel into an upscale getaway.

For breakfast, grab a coffee at **Bucks Coffee Cafe** before walking down the street to the **Elevated Kitchen**, a food truck serving scratch-made biscuit egg-and-cheese sandwiches. Walk off breakfast while browsing stores like



Cashiers Farmers Market



High Hampton Inn

**Zoller Hardware** and **Interior Enhancements, Inc.** A must stop is the **Cashiers Farmers Market**, which is chock-full of locally and North Carolina-made provisions.

At night, unwind with a glass of wine at **Hotel Cashiers'** wine bar, which features a retro, midcentury-modern vibe and an array of wine selections. For a casual dinner, grab a burger and a draft IPA at nearby **Whiteside Brewing Company**. For a formal option, High Hampton's dining room is a must, with its revamped menu courtesy of Blackberry Farm. The finishing touch is a round of s'mores by the outdoor fire overlooking the Inn's pond. ♦





# Beverly Allen INTERIORS

Beverly Allen is one of the most established interior designers in Charlotte. Founded in 1984, her design firm has roots firmly planted in the design community with a classic and stylish aesthetic. Allen is a perennial favorite of clients looking for a timeless design fixed in sophistication and thoughtful planning.

"The guiding principles for most of my designs are beauty and functionality," says Allen, "but the biggest inspiration for this project was the architecture of the home." Allen accomplished the meld of architecture and interiors by mixing pieces like the Turkish Oushak rug with a muted color palette alongside mirror-top tables and warm wood accents. "We placed two long sofas with gentle curves perpendicular to the fireplace and added custom demi-lunes made with classic French molding," she explains. The results speak to Allen's attention to detail at every turn. "The exterior included stucco, a mansard roof, and French detailing, so we brought in solid colors, graceful lines, a mix of materials, and subtle hues to get the look our client wanted."

1. Willow Sofa / to the trade / [hickorychair.com](http://hickorychair.com)
2. Floor Lamp / \$1,619 / [visualcomfort.com](http://visualcomfort.com)
3. Antique French Mirror / \$4,000 / [granville-charlotte.com](http://granville-charlotte.com)
4. Custom Demi-Lune / [beverlyalleninteriors.com](http://beverlyalleninteriors.com)
5. Turkish Oushak Rug / inquire for price / [charlotteruggallery.com](http://charlotteruggallery.com)
6. Pillow, Covered in Mark Alexander Fabric / to the trade / [markalexander.com](http://markalexander.com)



6



2



5



3



4



HOOKER®  
— FURNITURE —



Charlotte/Pineville, NC • Hickory, NC  
[goodshomefurnishings.com](http://goodshomefurnishings.com)





Design Centers International  
Home Resource

*a Partnership*  
from Planning to Perfection

**CUSTOM CABINETS | APPLIANCES | PLUMBING | TILE**  
SUB-ZERO - WOLF - COVE | THERMADOR | BOSCH | BLUE STAR | MIELE | LACORNUE | FULGOR



704.926.6000 | DCIHOMERESOURCE.COM | 1300 SOUTH BOULEVARD - SUITE C, CHARLOTTE, NC 28203 | MON-FRI 9AM-6PM





# INTERIORS





Zeller found the dining room's Madeaux wallpaper while on a sourcing trip to ADAC in Atlanta, and the print set the room's design in motion. "My client loved the dramatic pattern and color palette of the wallpaper, and I loved it because I knew it would tie together the dining room, foyer, and living room perfectly," she says.



A dining room interior featuring a large mirror, floral wallpaper, and a wooden table with blue leather chairs. The mirror reflects the room and the hanging light fixtures. The wallpaper has a dark background with large, colorful floral and bird patterns. The table is set with a bottle of wine, glasses, and a bowl of fruit. The chairs are upholstered in a vibrant blue leather with brass nailhead trim.

# Flashes of Brilliance

TEXT BY BLAKE MILLER | PHOTOGRAPHY BY DUSTIN AND SUSIE PECK  
STYLING BY ELEANOR ROPER

DESIGNER TRACI  
ZELLER SAW THE  
HIDDEN POTENTIAL  
IN HER CLIENTS'  
EASTOVER HOME.





**ABOVE:** To create a dramatic entry, Zeller used the same Phillip Jeffries rivets wallpaper that was in the nearby hallway. The horizontal and vertical lines of the paper result in a dramatic but sophisticated look that elongates and opens up the entrance to the home.

**OPPOSITE:** With a set of young twins, it was important for everything to be kid-friendly and durable, even in the formal living room. The wall's silk wallcovering by Phillip Jeffries has a protective coating to keep sticky hands from staining the walls.

AFTER A LONG and tiresome renovation of their 1930s Colonial in Connecticut, the homeowners were exhausted. So when they got news that a job would take them to Charlotte, the couple knew they did not want to tackle another makeover project. "We literally had PTSD from the renovation and knew we wanted something that was turnkey," says the homeowner.

A search commenced with two major criteria: no renovating and no new construction. It was a cell phone video from the wife's mother of a stunning 1960s Georgian in Eastover that sealed the deal for the couple. "We love the character and architectural details of an older home, and could see that even from the grainy video my mom sent us," laughs the homeowner. "It had been renovated a few times prior, so there wasn't anything we needed to do structurally."

Cosmetically, though, the home needed the couple's stamp. Just six months after moving in, the homeowners met with designer Traci Zeller and knew she was the one. "Traci's style felt very family friendly but also functional," says the homeowner. "Her work was so beautiful with a touch of tradition to it, which I love. All of her projects felt like













The den's ceiling featured an existing royal blue grasscloth that the homeowners wanted to keep. Zeller used that as a springboard for the rest of the room and layered the space with the homeowners' existing sofa and chairs reupholstered in an InsideOut fabric. The drapery and pillow fabrics are by Ferrick Mason.





**LEFT:** The Osborne & Little wallpaper defines the downstairs powder room and sets the tone for a traditional yet elegant aesthetic throughout the downstairs.

**BELOW:** The keeping room off the kitchen is used as a place for the homeowner to relax and read while still being in earshot of her kids in the kitchen. Zeller updated the tiny alcove with a swivel chair by Wesley Hall and Roman shade fabric by Heather Chadduck Textiles.



a family could really live in every single room,” which was of utmost importance to the family of four with a set of young twins.

To attract buyers, the home had been stripped of the former owners’ bold, graphic wallcoverings and paint selections, and “grayed over” per the Realtor’s request. Despite the neutral downgrade, Zeller was able to glimpse the previous designer’s aesthetic. “The home was a blank slate, but then you’d see some of these elements that remained untouched, like this beautiful grasscloth on the vaulted ceiling in family room,” says Zeller. “There were all of these tiny flashes of brilliance throughout the home.”

Zeller has an innate ability to read her clients, and, as such, was able to discern immediately that the homeowners loved an updated traditional aesthetic. “She’s traditional in

all the best ways,” says the designer of her client. “She loves a layered, traditional look that’s not kitschy or over-the-top. Who doesn’t love a good toile?”

With that, Zeller and her team set the design in motion, pulling floral and bird motif wallcoverings to pair with plaid fabrics and gingham prints to layer with those “flashes of brilliance” left behind. The mudroom features a modern blue lacquer on the walls and millwork from the previous owner. To update it, Zeller added an elegant but traditional gingham-print wallpaper by Scot Meacham Wood Home. “It instantly freshened up the space,” says the designer. In the library, existing paneling and architectural details were highlighted with the addition of a windowpane





To achieve a cozy, preppy feel in the library, Zeller complemented the existing millwork and wood paneling with plaid fabric on the draperies and an ottoman by Wind. To further warm the space, she added a wallpaper by Phillip Jeffries on the ceiling.







To balance the large, open wall in the breakfast area with the heaviness of the kitchen's finishes, Zeller added a custom upholstered banquette in a Heather Chaddock Textiles fabric, fabricated by Design Services of Charlotte. The dining chairs from CR Laine complement the fabric, which was also used on the kitchen's Roman shades. **OPPOSITE:** To freshen up the kitchen, Zeller painted the island blue and swapped out the existing pendants with a pair of oversized lanterns by Visual Comfort. The counter stools are by Vanguard.





The previous owners left behind the blue-and-white Roman shades in the owner's suite, so Zeller used them, along with drapery fabric by Travers, as inspiration for the room's design. She layered the space with other blue-and-white touches, including a Lee Jofa fabric on the bolster and a bench reupholstered in a Suzanne Tucker fabric.







The mudroom was overdue for an update, so Zeller opted to keep the original teal lacquer on the millwork but modernized (and injected a preppy vibe) with the gingham wallpaper by Scot Meacham Wood Home.

plaid wallpaper by Phillip Jeffries on the ceiling and vinyl grasscloth by Thibault on the back of the bookshelves “to give them more dimension.” Meanwhile, in the kitchen, the one-time black island was painted Wedgewood Gray by Benjamin Moore for a traditional look and feel, and complemented by counter stools by Vanguard. “These glimpses of genius that were left behind were great complements to what we added in the interior design,” says Zeller.

While the interior installation did not happen overnight, it was a painless process for the couple. “Traci was exactly what we needed coming off that last renovation,” says the homeowner. “She knew exactly what we wanted and what our family needed after the reno, our move to Charlotte, and just having two small kids. We get compliments on our home all the time. Ten out of ten. I wouldn’t change a thing if I were to do it again.” ♦



# MOUNTAIN *MAJESTY*

TEXT BY MARIA MASTERS | PHOTOGRAPHY BY DUSTIN AND SUSIE PECK





DESIGNER ALLAN CHAPMAN CREATES A CALMING AND SERENE RETREAT  
FOR A FAMILY OF FOUR IN CASHIERS, NORTH CAROLINA.



Designed by Sam Edgens of  
Edgens Herzog Architects, the  
homes in GlenCove feature  
a synthetic slate roof and  
brick exterior, which evoke a  
European farmhouse.





From the kitchen, a pair of accordion doors open onto the screened-in porch, where the family of four can dine al fresco while watching sports on TV. In the evenings, the uplighting in the rafters of the pitched ceiling give the room a soft, ambient glow. The outdoor dining table is from Ballard Designs and the couch is from Lane Venture.

REALTOR KATI MILLER is her own best client. She and her husband Cory weren't looking to move, but when Kati was assigned as the marketing agent for GlenCove by Old Edwards, a private wellness community nestled in the heart of the Blue Ridge Mountains in Cashiers, North Carolina, the couple couldn't resist moving there themselves.

Each of the homes, designed by architect Sam Edgens of Edgens Herzog Architects, has a European farmhouse-style to them, with sweeping architectural lines, brick facades, and synthetic slate roofs. "We loved the architecture and the floor plan," says Kati.

The community itself was also a draw: GlenCove features resort-style living, complete with hiking trails, a twelve-hole golf course, a fitness center, an organic garden, and a pool—all of which would provide plenty of entertainment for the Millers and their two teenage children.

Once the plans were in place, building and designing the home became a family affair. Cory, the owner of Miller Residential, handled the home's construction, and enlisted the help of his sister-in-law Allan Chapman of Charlotte-based firm Allan Chapman Interiors to design the rooms.



For formal affairs, the homeowners entertain in the dining room, which boasts sweeping views of the outdoors. The dining table, by RH, is both rustic and modern, says Chapman. A pair of doors, which flank the wall of picturesque windows, lead to an outdoor porch, where you can watch the moon rise.







**ABOVE:** The Carleton V Ltd. wallpaper in Ardennes is a nod to the home's mountain surroundings. "It feels like you're walking in the woods, which is very fitting," says Chapman. The brass light fixtures by Visual Comfort, coupled with the matte black faucet and towel bar, lend a refined but rustic feel to the room.

**LEFT:** The custom upholstered bed in the guest bedroom features Euro shams in a Beacon Hill fabric from A. Hoke Ltd. The draperies are by Romo.

The couple wanted a modern take on a traditional mountain home—an aesthetic fit for the primary home that it was. In lieu of adding heavy plaids and dark woods, Chapman instead opted for a neutral color palette throughout and injected visual interest with textures such as linens and bouclé fabrics. "They wanted clean and inviting," says Chapman. Their previous furniture didn't mesh with the new aesthetic, so the homeowners purchased nearly all new pieces for the house.

To achieve a laid-back yet wholly sophisticated and modern mountain feel, finishes were chosen carefully. Chapman selected a mix of nickel, brass, and matte black finishes to complement some of the home's existing design elements, such

as the black iron handrail in the entryway and the metal details on the range hood, which were designed by the architect.

The result is a stunning home that plays host to the couple's family and friends, who visit at least once every few weeks. For larger events and holidays, the couple entertains in the formal dining room and the great room, which features fourteen-foot ceilings and ample seating. The main floor also has a guest bedroom, complete with an en suite bathroom. "People will tell us they're coming to stay," says Kati. "They want to take advantage of the hiking or other activities in the mountains."

When the family isn't entertaining, they often watch movies together in the small, moody den tucked into the corner of the house and eat dinner on the screened-in porch just off the



A dramatic wooden arch frames the entryway to the great room, where the family often entertains. The room features plenty of seating for visiting family and friends, including a bold, green velvet sofa by Lee Industries. A black iron and brass chandelier by Visual Comfort completes the space.









Chapman designed the owner's suite to be calming and serene, anchoring the space with an upholstered canopy bed by Bernhardt. The pitched roof keeps the bed from dwarfing the room, she says. Romo drapery and a ceiling fan by Visual Comfort complete the look.







kitchen, which overlooks the GlenCove community garden. “When it’s cold, the homeowners have the fire going, and they keep some big heavy blankets on the sofas, so you can just curl up,” says Chapman.

But for all the beauty of the home’s interior, it’s the outdoors that truly take center stage. “In the mountains, there’s a lot of indoor-outdoor living,” says Chapman. “The

area is a rainforest, so everything is in bloom and growing. It almost looks picturesque.” The home came together seamlessly, in part because Chapman was so in tune with Kati and Cory’s vision for a modern mountain retreat. “She had a general idea of what she was looking for, but really let me run with the project,” says Chapman. “I loved working with my sister-in-law.” ♦



Tucked away in one corner of the home is the den, dubbed "Cory's Man Cave," where the family often gathers to watch movies. The reclaimed-wood ceiling and bold walls, painted in Farrow & Ball Green Smoke, lends the room a moody feel. **OPPOSITE:** In the kitchen, the homeowners opted for a modern tongue-in-groove ceiling and walls instead of traditional shiplap. Above the island, the Regina Andrew pendants feature similar rivets and metal details to the range hood. Behind the range is a large butler's pantry.





# SHAPE SHIFTER

TEXT BY ANNE MARIE ASHLEY | PHOTOGRAPHY BY LAURA SUMRAK





DESIGNER HILL RONDERO  
SHIFTS A HOME FROM HEAVYSET  
TO ALMOST ETHEREAL USING  
LIGHT, AIR, AND A HEALTHY  
DOSE OF LAYERING.

In the pass-through between the family room and owner's suite, Rondero worked with builder Stanwick Dunham to create interest with architectural details. **OPPOSITE:** Rondero saw the breakfast room as one of the most challenging and rewarding rooms to work on. Here she used a Four Hands table, chairs from CB2, and simple sconces from Schoolhouse Electric.





An Anne Venetian mirror from Chairish hangs above the sink in the moody powder room. Contrasting white pendant sconces from Urban Electric hang close by, and Newport Brass fixtures add warmth.

The slate floors in the foyer were one of the items Rondero chose to keep. They were just “too beautiful and natural to tear up.” Many of the other touches, however, had to go. Kitchen: gutted. Mudroom: gutted. Family room: gutted. But the wood-paneled den was a keeper. “When we removed all the dark and heavy pieces and replaced them with white walls and plaster, the wood-paneled room suddenly became this cozy balance,” says Rondero. “And I think that’s where I knew we had to play with the weights of all of the rest of the touches that made this home unique.”

So, in small doses, Rondero left the textures and added in her own with layers of art and accessories from the homeowner. A Wells Fargo employee by day and an artist by night, the homeowner had an impressive collection of accessories to pull from, with plenty left over to rotate out when things felt stale. “The homeowner is so talented and truly has some of the best accessories, like vintage books and incredible vintage art—as well as her own. So we installed intentional places she could curate, like the custom glass cabinet in the kitchen and display shelving in the pantry, and bookshelves in the den,” says Rondero.

Because of the homeowner’s inherent collection, Rondero and her team focused on the base design, including the layout, the flow, the color scheme, and the furniture. Not all of the homeowner’s belongings translated from the old home, however, because the scale was off, and many new furniture items had to be purchased. Some, though, were reused, such as the dining table in their breakfast nook, where Rondero removed two of three stone

WHEN THEY PURCHASED this Myers Park home, the homeowners knew they were in for some heavy lifting. The renovation alone was going to be intense and expensive, but they saw the beauty in its bones, and the lot size, location, and cedar roof couldn’t be ignored.

“I had worked with these homeowners on their previous home and even though they loved it, they knew it was time for more space,” explains designer Hill Rondero of Ro House Studio. “This home was built sometime in the eighties and was weighed down with wood, stone, slate floors, dark colors, and beams. I knew if we could shift some of the weights and pare down the materials, we could create a magical home.”



The natural slate floor in the foyer was a keeper from day one. Rondero added a marble pedestal table from Wisteria and the show-stopper: a Glen Eden cheetah-print stair runner.









The black-and-white kitchen is warmed with brass accents like the Jamie Young pendants above the island and hardware from Ashley Norton. Counter stools are from Four Hands, and the sconce by the stove is by Blueprint Lighting in New York. **OPPOSITE:** Four Hands swivel chairs and a CB2 sofa dot the original wood-paneled office. A Petite Friture chandelier adds a hefty dose of cool.





The black-and-white kitchen is warmed with brass accents like hardware from Ashley Norton and sconces by the range hood and sconces by the range hood by Blueprint Lighting in New York.



walls, added a rice-paper chandelier, and had the fireplace limewashed. “This ended up being one of my favorite rooms. It was so challenging, but so fun to transform,” she says. They collaborated with the homeowner and builder, Stanwick Dunham, on the pass-through space from the family room to the owner’s suite to consider how best to use and style it. Overall, the design, like Ro House’s aesthetic, reads neutral with pops of color.

“My aesthetic has always been layered, textured, undesigned, and casual with an edge,” says Rondero. As for homeowners trying to establish their own aesthetic, Rondero suggests this: “Get the room clean and white, and then layer in pieces you like. You will start to see a pattern in the things you choose. ‘Why do I have so much terra cotta?’ Figure it out. It comes down to the editing. You will see it in the things that you consistently choose that bring you joy.” ♦



If Ro House Studio had a vibe, it's this dining room: neutral with bold pops of color and a casual edge. Mustard Jonathan Adler chairs encircle the homeowner's own dining table with host chairs from RH adding a dollop of sophistication. A Visual Comfort chandelier is both modern and old world at once.









Made Goods nightstands flank the Oly Studio canopy bed in the owner's bedroom. Art above the bed is by Katie Gong, and the rug is from Four Hands.







CELEBRATING



LUCY BUTLER



MELISSA COLLINS



LEIGH C. CORSO



CAY CRAIG



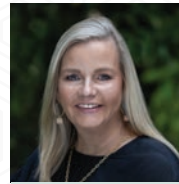
LINDA HENLEY



THE HUNEYCUTT  
TEAM



CHIP JETTON



BECKY MCGRATH  
TEAM



HEATHER  
MONTGOMERY



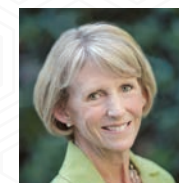
LINDSAY  
REDFERN



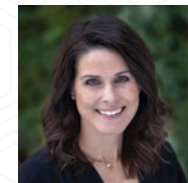
SARA ROCHE  
TEAM



LISA RUPP



LISA WARREN



HEATHER  
WOLKING

*Leading*  
REAL ESTATE  
COMPANIES  
OF THE WORLD

  
CottinghamChalk

LP  
LUXURY  
PORTFOLIO  
INTERNATIONAL

704.364.1700 | COTTINGHAMCHALK.COM





# RESOURCES



# HOLIDAY *READY*

A. HOKE LTD. HELPS DESIGNERS OUTFIT  
CLIENTS' HOMES FOR A SEASON OF GATHERING.

WRITTEN BY BRANDY WOODS SNOW

As the holiday season arrives, many homeowners find themselves looking for a refresh. But in an industry where furniture lead times stretch out for weeks and lengthy backorders are common, implementing a new home design seems too little, too late once the summer ends.

That is, unless designers can source locally from a true partner-in-design that offers available products and accessories on the showroom floor. A. Hoke Ltd. has built their reputation on being such a partner, touting a highly trained and responsive staff and a stocked showroom loaded with floor

samples, art, and project finishers that can be touched, experienced, and ultimately purchased on site.

"Clients want to feel ready to host for the holidays, and we refresh and style for many of them each year around Thanksgiving," says Lauren Hood, owner of Progeny Interiors. "It is impossible to get new custom furniture at the drop of a hat. More than once, my clients have purchased items directly from the floor at A. Hoke Ltd., and it has worked out fabulously!"

The "shop the showroom" aspect is not only a lifesaver for quick holiday refreshes but has proven valuable to busy







“MORE THAN ONCE, MY CLIENTS HAVE  
PURCHASED ITEMS DIRECTLY FROM THE FLOOR AT  
A. HOKE LTD., AND IT HAS WORKED OUT FABULOUSLY!”

—LAUREN HOOD

designers working on deadline, no matter the season or the project scope.

Hood notes that she relies on A. Hoke Ltd. for the selection of quality lines and also for their staff’s expertise and her ability to source products directly when needed. “I began working with them in 2014 when I needed a local resource for custom furnishings and fabrics, and I’m a loyal customer to several of the furniture brands they carry,” says Hood. “Many clients prefer to see pieces in person, and there are typically several pieces of furniture on the showroom floor similar in size to what I’ve sourced for their project. This works well for busy clients who want a more active role in fabric and furniture selections.”

For one client’s living room, Hood sourced a sectional and leather ottoman by Lee Industries as well as Lee Jofa

wallpaper and Pindler drapes from A. Hoke Ltd. to create a layered, textured feel to warm up the large space and make it feel cozier for the family of five. In another project, she secured a custom-ordered Lee Industries chaise and gorgeous velvet Kravet/Lee Jofa drapes. In addition to an extensive array of furniture, fabrics, wallcoverings, lighting, and flooring, designers can also find a host of accessories, from traditional pieces to those that push the envelope. One of Hood’s favorite A. Hoke Ltd. purchases was a quirky gold serpent mirror for a client’s hallway that both she and her client fell in love with.

No matter the season or the project timing, Hood knows that A. Hoke Ltd. is her trusted go-to source. “They’re always helpful when I’m looking for specific pieces, and they partner with us to keep tabs on all orders and timelines for our clients.” ♦



# HANDCRAFTED *HEIRLOOMS*

WOOL AND SILK RUGS ARE FINE ART FOR YOUR FLOORS.

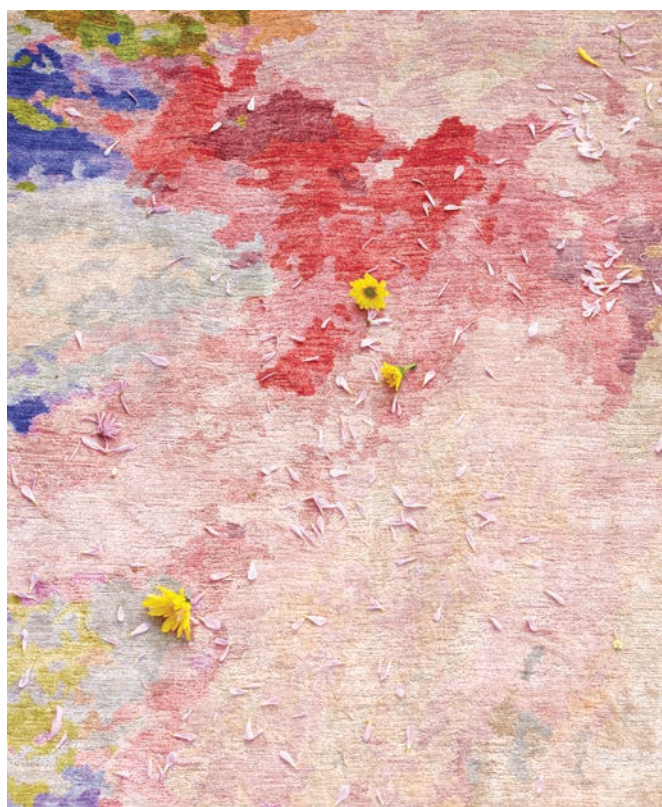
WRITTEN BY BRANDY WOODS SNOW



When contemplating interior decorating, the first thoughts tend to center around furniture and fabrics and paint colors, but an integral part of every design is the rug. No other part of a comprehensive design is tasked with so much—adding texture, connecting spaces, infusing color and movement, imparting comfort and warmth—while needing to remain both beautiful and durable in the face of foot traffic, pets, children, and the rigors of everyday life.

A handcrafted rug is a true anchor in a robust design, both aesthetically and functionally, and the most beautiful ones can even be elevated as works of fine art.

For Jack Schmalfeld of Artisan Rug Gallery, offering clients the finest rugs from across the globe is a passion he takes seriously.



GABBY JONES



“EACH RUG IS A  
TRUE REFLECTION OF  
ARTISTIC BRILLIANCE.”

—JACK SCHMALFELD



After getting into the rug business in Colorado in 2013, he moved back to Charlotte in 2020 and opened a local store to provide homeowners and designers access to the best hand-knotted and crafted rugs on the market. Operating as a dealer for many of the top national and international brands, he also imports one-of-a-kind rugs and works directly with weavers to create custom products.

One of his favorite lines is Wool and Silk, a boutique family-owned rug manufacturer whose rugs are made in Nepal, the pinnacle of contemporary rug making.

“Wool and Silk was established in 2010 and maintains the same weavers they’ve used since the beginning. This allows them to maintain tight control over the quality of their product, which is second to none on the market,” says Schmalfeld. “While most of the rugs fall into the contemporary category, there is nothing conventional about these designs. With influences from Asian tapestries to modern artwork to the artist’s natural landscape photography, each rug is a true reflection of artistic brilliance.”

The timeless beauty of the Wool and Silk lines can be directly attributed to the passions of founder and lifelong artist Erbil Tezcan. His love of color and design combined with a deep knowledge of hand-knotted rugs is the key ingredient in what elevates these rugs to fine art.



Crafted from Tibetan wool sourced from high-altitude sheep that have high lanolin content, Wool and Silk rugs are extremely durable. The company produces 150-knot-per-square-inch rugs in a proprietary texture, which is three parts wool and one part silk, and the high knot and silk content count allows for impeccable detail and shading in the designs. Their lines boast an array of incredible colorways and offer extreme resiliency in any home environment. They are also prone to developing a natural patina over time, becoming more beautiful with age.

The After Hours collection is an example of modern art interpreted as rugs, and new Arctic Sea designs will be released in the spring along with two new textures: a 100-percent silk variety and an 80-knot all-wool option.

“The Wool and Silk lines are stunning,” says Schmalfeld. “These rugs are like a fine work of art.” ♦

For more information, call 980-938-8786  
or visit [ARTISANRUGGALLERY.COM](http://ARTISANRUGGALLERY.COM).



# HEAVY LIFTING

CLOPAY'S MODERN STEEL GARAGE DOORS  
GO THE DISTANCE IN FUNCTIONALITY AND FASHION.

WRITTEN BY BRANDY WOODS SNOW

For an estimated 90 percent of homeowners, the garage door serves as the primary way in and out of their residence. For visitors, it's often the first thing seen when pulling into the driveway. From the street, passersby are sure to notice if that garage door adds to or detracts from the home's curb appeal. Comprising a significant portion of the home's facade, the garage door must be eye-catching as well as functional, maintaining flawless performance under the strain of everyday use. No other feature on a house is expected to do so much.

One could say that garage doors must do some heavy lifting.

Phil Cox, owner of Cox Door Company, has spent more than forty years providing the highest-quality lines of garage doors,

accessories, and service to clients looking to install doors that provide both form and function to their home. One of his top-selling lines is Clopay, which offers a wide selection of residential doors with a plethora of customization options, all backed by one of the industry's best warranties.

"Cox Door Company stands behind each and every door that's sold. Our clients, spanning generations of families, can vouch for our commitment to their total satisfaction," Cox says. "Clopay is consistently one of our bestsellers due to their sturdy construction and unmatched quality."

Clopay's Modern Steel collection is one of the hottest products currently on the market. Known for their subtle beauty and clean



COURTESY OF CLOPAY





“IF YOU INVEST IN QUALITY,  
THEN YOU CAN EXPECT TO SEE THAT SIGNIFICANT ROI.”

—PHIL COX

lines, the steel-panel doors are the perfect options for contemporary and midcentury-style homes. Homeowners can choose between flush or grooved panels in more than fifteen factory-finish options, including Clopay’s signature Ultra-Grain, Lustra, and Ultra-Grain Plank. Additionally, there are many window orientations and configurations available, including short, long, and slim sizes with glass options such as clear, obscure, narrow reed, and frosted. Heavy-duty hardware and rust-prevention systems ensure each door is as functional in the long-term as it is beautiful.

Current trends show black as one of the hottest colors in demand for residential clients. With a sleek, modern appeal, black doors are stunning when left clean and simple or adorned with specialty hardware or panels.

While these black doors may be the top choice aesthetically, Cox notes that for homes situated in the South where heat can be an issue, it is imperative to ensure the door has adequate insulation to avoid creating a sauna-like environment in the garage. Clopay answers that call with doors available in three-layer construction and two insulation options—the two-inch

Intellicore polyurethane and the two-inch polystyrene—with R-values ranging from 9.0 to 18.4.

Investing in a garage door should be taken seriously. Cox says that homeowners who invest in quality-crafted and attractive garage doors stand to recoup 100 percent of their investment when selling their home. “It’s easy to see if homeowners have cut corners when selecting a door, and it sets the tone for the rest of the home,” he says. “If you invest in quality, then you can expect to see that significant ROI.”◆





# POOLS, UNPARALLELED

TRANSFORM YOUR BACKYARD INTO A PERSONAL  
PARADISE WITH BLUE HAVEN POOLS & SPAS.

WRITTEN BY RHETTA CLOYD

Your home is not just a place; it's a reflection of you. It's where memories are made and your lifestyle takes shape. One surefire way to enhance both the value of your home and the quality of your life is by investing in a custom-built pool for your backyard, and there's no one better to trust with this dream than Blue Haven Pools & Spas.

With a legacy spanning over two decades, Blue Haven Pools & Spas has become synonymous with exquisite craftsmanship and unparalleled elegance. Their bespoke pools are meticulously designed to seamlessly integrate with the architectural aesthetics of your home, creating a harmonious blend of indoor and outdoor living and catering to your unique taste.

At Blue Haven Pools & Spas, your vision becomes their mission. They understand that your home is an extension of

yourself, and their team of skilled designers and craftsmen work tirelessly to bring your dream pool to life. Whether you envision an infinity pool that mirrors the horizon or one with a contemporary geometric design, a family-friendly haven or an entertainer's paradise, their experienced team has the expertise and financing options to make it a reality.

What sets Blue Haven Pools & Spas apart is their unwavering commitment to quality. They source only the finest materials and employ cutting-edge technology to ensure that your custom-built pool is not just beautiful, but also built to last. Their meticulous attention to detail and craftsmanship means your pool is not merely a pool—it's an enduring work of art that adds significant value to your home.



JULIE JACKSON





## AT BLUE HAVEN POOLS & SPAS, YOUR VISION BECOMES THEIR MISSION.

Blue Haven Pools & Spas prides themselves on innovation. They integrate smart automation, energy-efficient systems, and sustainable design principles into every project. This not only reduces the environmental footprint but also makes maintenance a breeze, leaving you more time to enjoy your pool and less time worrying about it.

It's not just about having a unique water feature in your backyard—it's about the entire outdoor experience. From sunbathing decks to swim-up bars to serene waterfalls and relaxing spas, these additions create a holistic outdoor oasis where you can entertain, relax, and bond with loved ones while taking your lifestyle to new heights and reducing the impacts of everyday stresses.

When it comes to investing in your home, trust matters. With a reputation built on excellence, a portfolio of satisfied clients across the Carolinas, and multiple awards for superior service and craftsmanship, the Blue Haven Pools & Spas team is the trusted choice for homeowners. ♦







UNRIVALED

LUXURY

Experience the next level in luxury real estate when you partner with us.

#1 privately owned real estate company in the country. Founding member of Leading Real Estate Companies of the World and Luxury Portfolio International.



**CHARLOTTE | \$2,500,000**  
2901 Rockbrook Drive  
Kim Trouten & Susan Hill  
704.877.8719



**CHARLOTTE | \$1,225,000**  
3317 Old Closeburn Court  
Andrea Kuykendal | 704.293.2329



**CHARLOTTE | \$1,075,000**  
6712 Seton House Lane  
Jean Benham | 704.363.2938



**CHARLOTTE | \$875,000**  
1137 Dilworth Crescent Row  
Marlyn Jamison & Logan Troutman  
704.363.4432

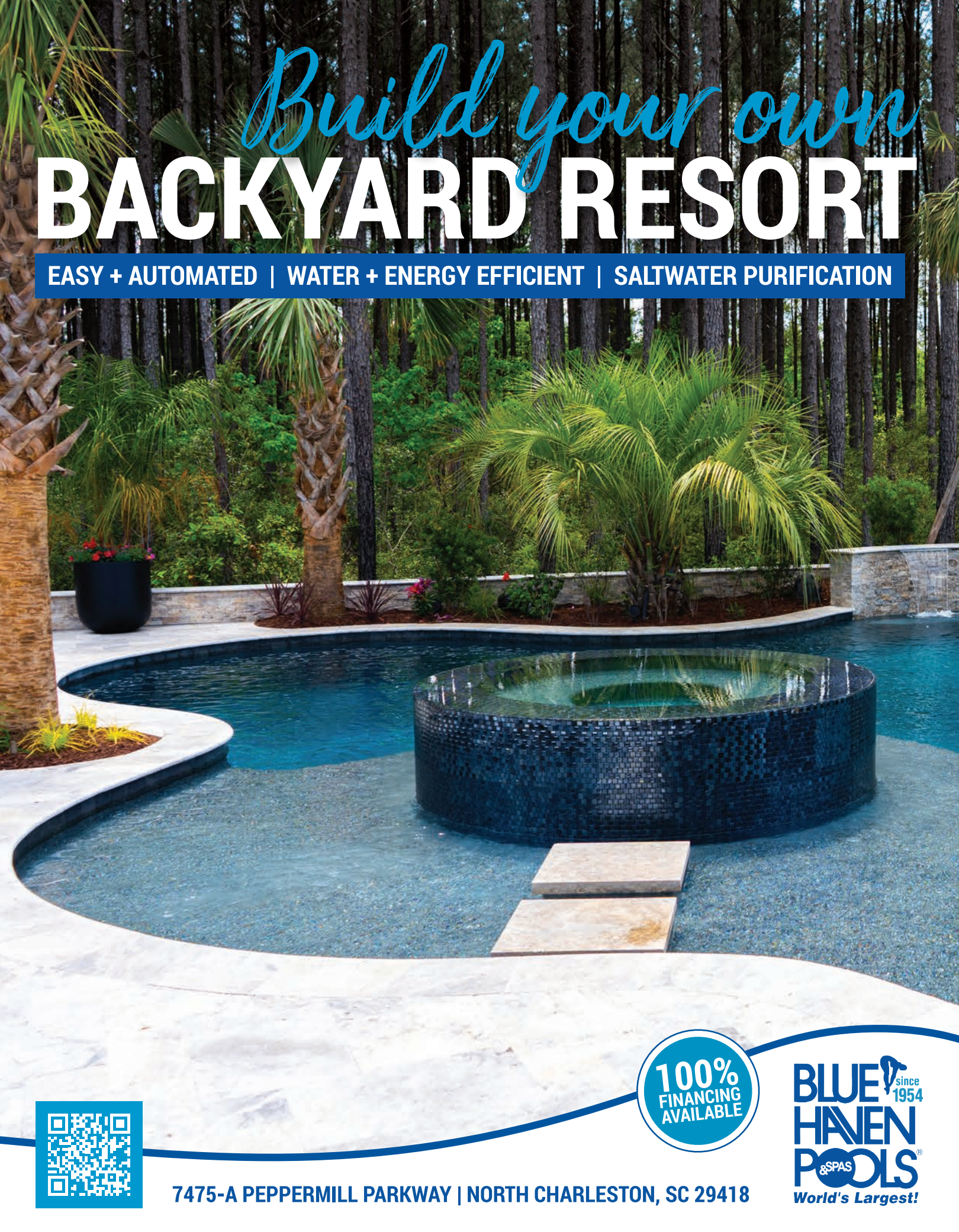


[allentate.luxuryportfolio.com](http://allentate.luxuryportfolio.com)

A HOWARD HANNA PARTNER







# *Build your own* **BACKYARD RESORT**

EASY + AUTOMATED | WATER + ENERGY EFFICIENT | SALTWATER PURIFICATION



7475-A PEPPERMILL PARKWAY | NORTH CHARLESTON, SC 29418



**BLUE** Since 1954  
**HAVEN**  
**POOLS** & SPAS  
*World's Largest!*





# STAKING A CLAIM

BY BETH CONANT KEIM

IN MY CLIENT'S NEW LAKEFRONT HOME, THE UPSTAIRS BEDROOM WAS DESIGNED AND BUILT TO BE THE LARGEST GUEST QUARTERS IN THE HOME.

When my client's daughter saw it, she quickly claimed it as her own—smart girl. She was drawn to the vaulted ceiling and the beautiful lake view. She is also drawn to the color

red. So, when the time came to design her room, her main request was to make red the primary color in the space. (I do like a decisive kid.)

Wanting to surprise her, I began working with the carpenter of this new build to design a loft bed. The bottom is a queen size, the top is a twin size, and the carpenter constructed a custom ladder bookcase on the side. Next, we needed to pull in some red. Schumacher is my go-to for the



MEKENZIE LOUI



HER MAIN REQUEST WAS  
TO MAKE RED THE PRIMARY  
COLOR IN THE SPACE.  
(I DO LIKE A DECISIVE KID.)



perfect wallcovering, and I found an ideal whimsical red print that has lasting power yet is not too childish. I decided to paper the two opposing walls for the most impact. To keep the clean aesthetic and not impede the view, I chose white window treatments with beautiful fringe detail, which are also functional, keeping the room dark for a good night's sleep.

I then pulled the colors into the en suite bathroom, but incorporated softer hues, like a lighter pink terracotta tile on the floor and a white porcelain raised pattern tile by Walker Zanger on the entire vanity wall.

Because she loves animals, I used bright red frames to highlight several unique, humorous animal photos.

For a girl who knew what she wanted, she was equally surprised and delighted at the reveal.

My job was done. ♦







mynewfloor.com

DISCOVER WHAT'S POSSIBLE



CURATED FOR YOU.

## LOVE YOUR FLOORS. LOVE YOUR PRICE.

Choosing the right flooring or carpet can be overwhelming. MyNewFloor.com simplifies your search with our Curated Collection of **wood, carpet, vinyl and tile** from leading manufacturers – all for one low all-inclusive price. Our **design-focused team** is here to help you select the products that fit your home and budget. And our **certified installers** will do the job right – quickly, accurately and professionally.

Visit one of our Charlotte area showrooms, and you'll see why thousands of satisfied customers have chosen MyNewFloor.com as their go-to flooring partner.

704.325.5952

**SOUTH CHARLOTTE**  
Blakeney Town Center  
9716-C Rea Road  
Charlotte, NC 28277

**SOUTH END**  
Factory South  
1300-C South Boulevard  
Charlotte, NC 28203

**LAKE NORMAN**  
Village at Oakhurst  
9606-A Bailey Road  
Cornelius, NC 28031

mynewfloor.com





LET'S START PLANNING YOUR NEXT PROJECT NOW



IMPACT FINE DESIGN  
CUSTOM CABINETRY & CLOSETS



IMPACT FINE DESIGN  
CUSTOM CABINETRY & CLOSETS

**CELEBRATING 13 YEARS!**  
WOMEN OWNED CHARLOTTE BUSINESS.

**CALL TODAY** TO CONSULT WITH OUR  
EXPERIENCED TEAM ON YOUR  
UPCOMING PROJECT.

**VISIT OUR SHOWROOM IN SOUTHBEND**

1300 S Mint St, Ste 110, Charlotte, NC 28203 | Office 704.778.6814



# ARTS & EXHIBITIONS SPOTLIGHT

## *THE ART OF SEATING: 200 YEARS OF AMERICAN DESIGN*

THE MINT MUSEUM

Through February 25, 2024  
mintmuseum.org

Despite their everyday use, few objects are taken for granted quite as much as the humble chair. *The Art of Seating: 200 Years of American Design* takes these ubiquitous objects and analyzes them as fascinating sculptural works of art. The exhibition, which has toured more than two dozen locations, includes more than fifty selections from the rich holdings of the Thomas H. and Diane DeMell Jacobsen Ph.D. Foundation. Featuring many of the most iconic designs and designers from the past two centuries, including George Hunzinger, Frank Lloyd Wright, Charles and Ray Eames, Eero Saarinen, Isamu Noguchi, Frank Gehry, and Vivian Beer, *The Art of Seating* encourages visitors to reconsider chairs as not just functional objects, but as works of art that tell stories of United States history.



## *KATHERINE BOXALL*

JERALD MELBERG GALLERY

Through December 9  
jeraldmelberg.com

Currently on view at Jerald Melberg Gallery are new abstract paintings by gallery artist Katherine Boxall. Based in Austin, Texas, the Canadian native holds an MFA from the San Francisco Art Institute and a BFA from Queen's University at Kingston. Incorporating a mix of materials such as acrylic, spray paint, pastel, and oil, Boxall creates lush, expressive paintings that exude conviction, energy, and knowledgeable composition.

## *MERAKI*

ANNE NEILSON FINE ART

November 9–December 30  
anneneilsonfineart.com

*Meraki* [greek: pronounced may-ruh-kee] meaning the essence of ourselves: to put soul, creativity, and love into your work. This group exhibition features a vast variety of ANFA artists for the holidays, namely Trudi Norris, Dusty Griffith, and Lisa Noonis. Each artist brings their unique voice to the walls of ANFA, creating with absolute devotion, moving the viewer to feel the souls of the artist behind the work.



CLOCKWISE FROM LEFT: CENTRIPETAL SPRING ARM CHAIR, CIRCA 1850 BY THOMAS E. WARREN, THE MINT MUSEUM; ART BY KATHERINE BOXALL; ART BY LISA NOONIS





11729 CAROLINA PLACE PARKWAY PINEVILLE, NC 704.541.0892 PEPPERMINTFOREST.COM



# SCENE SEEN

Three exciting events bring the Carolina design community together to celebrate beauty, purpose, and, of course, interiors.



1. ADAC: The Best of Charlotte Design. Terri Rechter, Sheryl Vandermolen Bucci, and Katie Miner.
2. The Green Chair Project's annual *Chairity* event. Maria Spillars and Chrissie Spillars Meadows.
3. The Green Chair Project's annual *Chairity* event. Jackie Craig, Astra Ball, and Gabie Craig Frantz.
4. Schumacher for Claudia Josephine Design. Hector Hernandez, Claudia Ricciardone, Ana Dudley, and Drew Dudley.

5. The Green Chair Project's annual *Chairity* event. Vicky Serany and Blake Miller.
6. Schumacher for Claudia Josephine Design. Amelia Sturt-Dilley, Rebecca Thwaites, and Jacqueline Perez.
7. Schumacher for Claudia Josephine Design. Ana Dudley and Marsela Green.



# HIGH COTTON HOME CO.



INTERIOR DESIGN • FURNITURE GALLERY

PARK ROAD SHOPPING CENTER 4247 PARK ROAD #295, CHARLOTTE, NC 28209  
704.335.1220 @HIGHCOTTONCLT WWW.HIGHCOTTONHOMECOMPANY.COM





1. ADAC: The Best of Charlotte Design. Mark Phelps, Kelly Perry, and Greg Perry.
2. The Green Chair Project's annual *Chairity* event. Megan Spillars, Chrissie Spillars Meadows, Beth McNally, and Maria Spillars.
3. ADAC: The Best of Charlotte Design. Ken Pursley and Kent Lineberger.
4. ADAC: The Best of Charlotte Design. Cindy Smith, Maggie Mardre, and Relly King.



5. The Green Chair Project's annual *Chairity* event. Lauren Burns, Blake Miller, and Daniela McShane.
6. The Green Chair Project's annual *Chairity* event. Bailey Plymyer and Sue Haberberger.
7. Schumacher for Claudia Josephine Design. Christina Drogaris, Claudia Ricciardone, Tracey Chagnon, and Natalie Fey.







(704) 275-8750  
[GOTCHACOVERED.COM/CAROLINAS](http://GOTCHACOVERED.COM/CAROLINAS)



# COZY UP YOUR STYLE & DECOR



DECORATIVE  
PAIR OF  
CATTLE HORNS



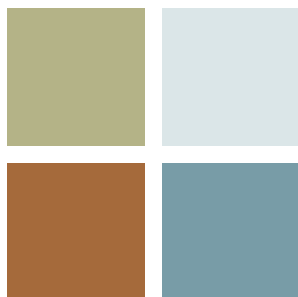
LAFCO FALL  
SCENTS



SKEEM  
MATCH  
CLOCHE



TARTAN COMPANY  
PLAID PICNIC  
BLANKET



COLOR  
PALETTE

## DESIGN TIP:

SEASONAL DECOR CAN ADD WARMTH & CHARM TO YOUR HOME. LIGHT A DELIGHTFUL CANDLE, LAYER IN A WOOL THROW, & ENJOY A GOOD READ BY THE FIRE.



## KEY DESIGN ELEMENTS

SCENTS: SPICED POMANDER BY LAFCO | *The Marketplace Gifts*  
ACCESSORIES: ETHICALLY SOURCED CATTLE HORNS | *Braveworks*  
LIGHTING: ASTRID LAMP WITH SELENITE DETAIL | *Light Up*



# Cotswold MarketPlace

RETAIL & DESIGN CENTER

HOME DECOR UPHOLSTERY ARTWORK WALLPAPER LIGHTING GIFTS



the look of  
A COZY  
STUDY

200 N. SHARON AMITY | CHARLOTTE, NC | 704.365.3331

COTSWOLDMARKETPLACE.COM



# FIELD PEA

CATERING





# Now Booking Holiday Gatherings

Full service events and drop-off/pick-up catering

*Plan your event*



N F & P

NORTH FOOD AND FURSUEITS





© 2019 California Closet Company, Inc. All rights reserved. Each franchise is independently owned and operated.

# CALIFORNIA CLOSETS®

Custom solutions for better living

704.527.5505 [californiaclosets.com](http://californiaclosets.com)

CHARLOTTE 224 East Blvd