

Charlotte

SEPTEMBER / OCTOBER 2023

HOME

DESIGN & DECOR

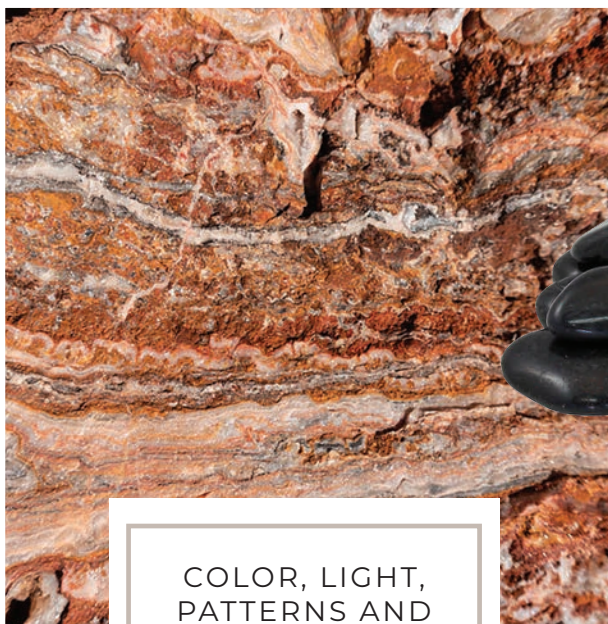
PLUS:
SHELL
SHOCKED

EVOLUTION
THEORY

DESIGNERS
at HOME



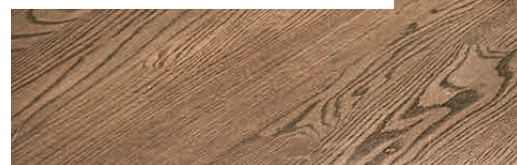
DESIGN FOR YOUR LIFE'S JOURNEY



COLOR, LIGHT,
PATTERNS AND
NATURE DEEPEN
THE CONNECTION
YOU HAVE WITH
YOUR HOME.



CLARKANDCLARKINTERIORS.COM
CHARLOTTE, NC





ANNE NEILSON

FINE ART



REPRESENTING OVER 50 ARTISTS WORLDWIDE, INCLUDING ...



CHRIS GROVES



MICHAEL BARRINGER



JUNIPER BRIGGS

info@anneneilsonfineart.com | 704.496.9181 | anneneilsonfineart.com
721 Governor Morrison St, Charlotte, NC 28211

THE COLOR OF *light* GREGG



Marcy Gregg, *Although*, 48 X 48, oil on canvas

MARCY GREGG SOLO EXHIBITION

OPENING RECEPTION | OCTOBER 12TH | 6 - 8 PM

ANNE NEILSON FINE ART

info@anneneilsonfineart.com | 704.496.9181 | anneneilsonfineart.com
721 Governor Morrison St, Charlotte, NC 28211



ENAMELED
CAST IRON
STRENGTH | STYLE | SOUL

STRENGTH. STYLE. SOUL.

No other material offers the character, durability and craftsmanship of KOHLER® enameled cast iron. Don't just design your home, shape your future.

Learn more at KOHLER.com/CastIron

THE BOLD LOOK
OF **KOHLER**®



THE
Majestic
BATH
KITCHEN AND BATH SHOWROOM

621 S. Sharon Amity Road
Charlotte, North Carolina 28211
704-366-9099
themajesticbath.com



Elevate everyday living



A new, inspirational look to pair with our tastemaker style and intriguing design, the new Gabby is ushering in a new era of everyday living to curate any room.

1308 WEST MOREHEAD STREET | CHARLOTTE | 704-372-0095

Gabby.com



With thoughtful planning and a managed design-to-build process, your home remodel will yield stunning results.

It's not uncommon for homeowners to approach Paul Kowalski Builders with trepidation about how to remodel their home. "Frequently, our homeowners know what they need from their home but aren't sure how to achieve the goal or what it should look like," states Paul Kowalski. PKB's design-to-build process erases those uncertainties and provides an

opportunity to partner with a team willing to listen and understand the goals, then use their expertise to develop a plan and construct it. PKB's in-house experts include architectural designers, project guides, construction managers, and a project developer.

With a focus on additions, whole home remodels, and reconfiguring

collaborate+design+create



Carolina Home Photography

spaces, PKB often works with growing families who love their location but need more space via additional bedrooms or a large addition. Soon-to-be empty-nesters ready to enter their new life stage are also regular clientele. Inefficient, outdated kitchens and primary bathrooms, and unfinished spaces also benefit from PKB's expertise.

Phase 1: Design unravels the homeowner's goals as the architectural team assesses the project and develops a conceptual plan. Homeowner feedback, material selections, and an estimate review lead to a clear vision of the project, final custom plans, and a detailed budget. **During Phase 2: Build**, PKB's construction managers

convert the final plans into a high quality, custom project, supervising all aspects of the build from start to finish.

When wondering how to transform your home to complement your lifestyle, PKB's process and team will provide a clear plan and work with you to build your high-quality dream project.

SEPTEMBER/OCTOBER 2023



FEATURES

42 EVOLUTION THEORY

Beth Conant Keim updates her home with personal style honed over years of creating killer dwellings for her clients.

54 THE BINDER

This Charlotte jewelry designer spent years collecting inspiration, and was finally able to bring it to life in her family's home.

64 GRADE-A RENOVATION

A dated A-frame finds new life on the shores of Lake Norman.



INTERIOR DESIGN FIRM: TYLER INTERIORS
PHOTOGRAPHER :LAURA SUMRAK



IMPACT FINE DESIGN
CUSTOM CABINETRY & CLOSETS

CALL TODAY TO CONSULT WITH OUR
EXPERIENCED TEAM ON YOUR
UPCOMING PROJECT.

VISIT OUR SHOWROOM IN SOUTHBEND

1300 S Mint St, Ste 110, Charlotte, NC 28203 | Office 704.778.6814

SEPTEMBER/OCTOBER 2023



DWELL

- 22 MARKET**
North Carolina is host to a bevy of designers and inspiration, and these debut collections are proof.
- 28 DESIGN**
A designer and home-builder couple transform their dated home into a color wonder.
- 32 PALETTE**
Classic and textural, tortoiseshell brings an unassuming depth to design.
- 34 NEW + NOTABLE**
Designer Tracey Wooster is making art accessible to the masses.
- 38 DESIGN BOARD**
Designer Kristen Ennis creates spaces that leave you feeling healthy and at ease.

RESOURCES

- 80 A RETURN TO COLOR**
One Dilworth home will leave tour-goers tickled pink.
- 82 THE FALL EXHIBITION**
Momentum Gallery introduces the work of five diverse artists in its fall exhibition season.
- 84 THE SECRET WEAPON**
A. Hoke Ltd.'s commitment to the design community is not just for show.

CONTRIBUTORS

- 88 ROOM SERVICE**
Beth Conant Keim
Office Visit
- 92 SOUL FOOD**
Jim Noble
Waning Days, Waxing Ventures

SPOTLIGHT

- 14 FROM THE EDITOR**
- 96 ARTS & EXHIBITIONS**



ARTISAN RUG
GALLERY

CHARLOTTE | DENVER | CRESTED BUTTE



Strawberry Moon by Wool & Silk Rugs

2204 HAWKINS STREET
CHARLOTTE, NC 28203
ARTISANRUGGALLERY.COM
980-938-8786



Our annual Designers at Home issue is easily one of the most anticipated issues of the year. The voyeuristic excitement we and our readers feel comes from a place of natural curiosity about how others cohabitate, mixed of course with a passion for interior design. What a thrill to get a glimpse into the homes of some of the South's most notable designers.

It's always enjoyable perusing the homes of others, but it's even more exciting when the homeowner happens to be a designer and the project was a personal labor of love. Here, we showcase three designers in their element, with carte blanche over every facet of design—from architectural details and paint selections to fabrics and accessories—and with no guidelines or criteria, resulting in a truly unique perspective of interior design.

Spanning renovations and new construction to different aesthetics and—for a bit of a twist—something outside the box when it comes to the term “designer,” this issue does not disappoint.

So pull up a cozy seat and peer through the looking glass.

Blake & Anne Marie

Blake Miller and Anne Marie Ashley
Co-Editors-in-Chief



ON THE COVER:
Designers Bryn Dunn and Erin Dougherty worked alongside jewelry designer Erin McDermott White to create an elegant and laid-back California aesthetic in her Charlotte home (page 54).

PHOTOGRAPHY: JEFFREY WILSON; STYLING: KENDRA SHAW

Cotswold MarketPlace

RETAIL & DESIGN CENTER

HOME DECOR UPHOLSTERY ARTWORK WALLPAPER LIGHTING GIFTS



200 N. SHARON AMITY | CHARLOTTE, NC | 704.365.3331

COTSWOLDMARKETPLACE.COM

HOME

DESIGN & DECOR

homedesigndecormag.com

SEPTEMBER/OCTOBER 2023

VOL 23 NO 5

CO-EDITORS-IN-CHIEF

ANNE MARIE ASHLEY
BLAKE MILLER

ASSOCIATE EDITOR

KARIN SIMONEAU

ART DIRECTOR

LINDSAY RICHARDS

PUBLISHER

MICHAEL KOOIMAN

ASSOCIATE PUBLISHER

OONAGH MURRAY

PRODUCTION COORDINATOR

SHELLEY KEMPER

CONTRIBUTORS

BETH CONANT KEIM
JIM NOBLE

WRITERS

BRANDY WOODS SNOW
CHRISTINA SPRATT SPENCER
DANA W. TODD

PHOTOGRAPHY

HEATHER ISON
MEKENZIE LOLI
DUSTIN AND SUSIE PECK
BRIE WILLIAMS

PHONE

704-741-2774



facebook.com/CharlotteHDD



@homedesigndecor_charlotte

All contents copyright 2023, Curated Media, LLC. No part of this publication may be reproduced in whole or in part without the express written consent from publisher. Mention of any product or service does not constitute endorsement from Home Design & Decor® Magazine. The information contained in this publication is deemed reliable from third party sources, but not guaranteed. Curated Media, LLC does not act as an agent for any of the advertisers in this publication. It is recommended that you choose a qualified remodeling, home furnishings or home improvement firm based on your own selection criteria.

Curated Media, LLC, d.b.a. Charlotte Home Design & Decor® Magazine, will not knowingly accept advertising for real estate which is a violation of the Fair Housing Act. All real estate advertising in Curated Media, LLC, d.b.a. Charlotte Home Design & Decor® Magazine, is subject to the Fair Housing Act which states "We are pledged to the letter and spirit of U.S. policy for the achievement of equal housing opportunity throughout the nation. We encourage and support an affirmative advertising and marketing program in which there are no barriers to obtaining housing because of race, color, religion, sex, handicap, familial status, or national origin."

Curated Media, LLC, d.b.a. Charlotte Home Design & Decor® Magazine, does not act as an agent for any of the realtors or builders in this publication. It is recommended that you choose a qualified realtor to assist you in your new home purchase.



ORIGINAL ART
ACCEPTING
CUSTOM WORK



Amy Sullivan Weishaar
AWHITEHAREDESIGNS.COM



B E R N H A R D T



Charlotte/Pineville, NC • Hickory, NC
goodshomefurnishings.com



Fall

in love with your brick home

 **General Shale Brick®**



Call or visit today
704-599-2877
10800 Reames Rd., Charlotte, NC, 28269



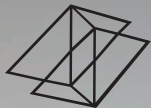


*Imagine your home, **BEAUTIFULLY ORGANIZED.***



Schedule a free in-home design consultation. | 704-741-8013 | [closetsbydesign.com](https://www.closetsbydesign.com)

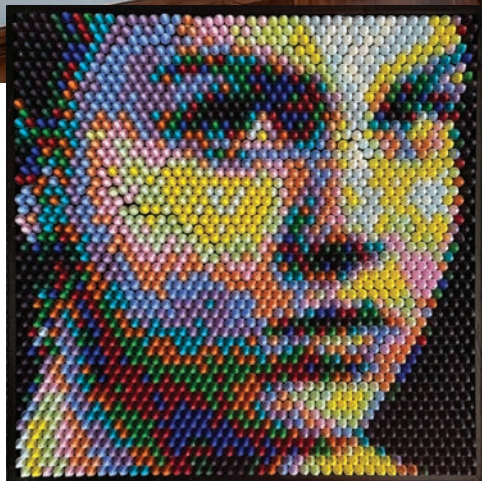
40% off plus 10% extra on orders of \$1,000 or more.
12 months financing. Offer Valid until June 30. Restrictions apply.



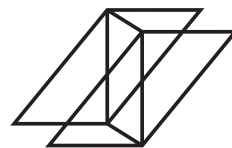
MOMENTUM
GALLERY



Christian Faur



© Chiluly 2023
Laguna Persian Studio Edition



MOMENTUM
GALLERY

DOWNTOWN ASHEVILLE

Paintings | Sculpture | Original Prints | Studio Furniture

MOMENTUM GALLERY offers a curated collection of museum quality works that celebrate material-based traditions rich in this area and reflect a contemporary aesthetic in harmony with our natural surroundings.

52 Broadway | 828.505.8550 | momentumgallery.com

[f momentumgalleryasheville](https://www.facebook.com/momentumgalleryasheville) [@@momentumgallery](https://www.instagram.com/@momentumgallery)

Samantha Keely Smith





HOME GROWN

INSPIRED BY THE CAROLINAS, THESE TALENTED DESIGNERS AWAKEN INTENTIONAL LIVING WITH THOUGHTFULLY CURATED DEBUT COLLECTIONS.

WRITTEN BY CHRISTINA SPRATT SPENCER | PRODUCED BY ANNE MARIE ASHLEY



PAPER PUSHER

Collaboratively created with Mitchell Black, the unmistakably bold and eclectic style of nationally known and locally loved Charlotte designer Natalie Papier, left, of Home Ec. infuses adventurously art-forward and cheeky patterns with vibrantly punchy palettes in this spirited signature collection. Each expressive design and colorway imbues a daring vivacity into any space. mitchellblack.com

KARMIC CLEANSE

Asheville-based perfume house Adoratherapy has launched a brand-new Room Boost Candles line, featuring five captivating scents aiming to ground specific intentions. The intentional scents include Blissful, Clear Away, Abundance, Serene, and Passion, all of which are made from the purest soy wax and essential oils, and are vegan, organic, and cruelty-free. Adoratherapy's biodynamic and wildcrafted growing methods, along with their harvesting and distillation techniques, allow each plant to produce its most natural and abundant functionalities, which are combined with wax to create the most effective scent experience. adoratherapy.com



COLEY HOME

MADE IN NORTH CAROLINA

VISIT OUR CHARLOTTE SHOWROOM • 2132 THRIFT ROAD, SUITE C

VISIT US ONLINE • COLEYHOME.COM



ARTWORK FROM HIDEELL BROOKS

CALL IT HOME

In her newest book set to release in October, designer Amber Lewis showcases her most treasured design projects from coast to coast, including a North Carolina mountain home that also graces the cover. Cozy, layered, and stunning all over, *Call It Home* reminds us that it's all in the details. randomhouse.com



BUILDING BLOCS

Bloc Bags, founded by a mother-daughter duo living on the same "block" in Charlotte, was born from a strong desire to help youths in foster care. When co-founder Carrie Tucker learned that most kids in foster care carry their belongings in garbage bags, she and her mother Poppy got to work creating fun and functional handbags and toiletry bags with interchangeable straps and custom patches, all with a one-for-one goal: each bag sold puts a bag in a foster closet. This family business recently teamed up with luxury department store giant Nordstrom to release their newest collection. In addition to their full line of bags available on nordstrom.com, Bloc Bags will be available in fourteen stores nationwide beginning in early fall. blocbags.com

BROKEN IS BEAUTIFUL

Los Angeles-based artist Leslie Nix was filled with creativity after visiting her sister in a small North Carolina town years ago. "[There was] an area with old shacks being used as shops with hand-painted signs that said 'gemstones,'" she says. "The shops used wine barrels to display slag glass, and the vessels filled with shiny glass rocks filled me with delight and inspiration." She began collecting slag glass, which are the discarded pieces from the glass manufacturing process, and used them to create original lighting and art. To forge her lighting designs, she often hand-sculpts the bases and casts them in brass or bronze before adding in everything from carved wood elements to etched markings, nickel accents, and, of course, a slag glass top. She debuted her newest pieces this year at the Coup D'Etat gallery in San Francisco, several of which are available for sale. coupdetatsf.com





exclusively at

Couture
Knots
HANDKNOTTED RUGS

CHARLOTTE, NC

704.819.6972

ALI@COUTUREKNOTS.COM

 @COUTUREKNOT

WWW.COUTUREKNOTS.COM

by appointment



ALL-AMERICAN

Renowned designer Mark Sikes has teamed up with North Carolina favorite Modern Matter to release an exclusive collaboration fit for every room in the home. Each collection is specially designed to fulfill the needs of different aspects of a house, from formal spaces to everyday areas to functional rooms like mudrooms.

The launch includes three sophisticated hardware collections—each available in an assortment of hand-applied finishes and adorned in motifs that recall classic Americana: the rosette-clad Valencia, the ball-shaped Clementine, and the industrial-style Pixie. modern-matter.com



THE BOLD AND BEAUTIFUL

Brand-new Charlotte design shop Elliston House debuted their inaugural collection of vibrant textiles and wallpaper with the aim to make high-end design accessible for all savvy spaces. A uniquely and intentionally curated boutique presentation of hand-drawn artisan patterns on high-quality ground cloths focuses on traditional nods, palatable price points, whimsical floral inspiration, and cheerful color stories. ellistonhouse.com



LEFT: MODERN MATTER; RIGHT: ELLISTON HOUSE AND ANNA ROUTH BARZIN



HELEN ADAMS REALTY

Serving Charlotte's Luxury Home Market Since 1975

helenadamsrealty.com | [@helenadamsrealty](https://www.instagram.com/helenadamsrealty)

Home on the Web

A DESIGNER AND HOME-BUILDER COUPLE
TRANSFORM THEIR DATED HOME INTO A
COLOR WONDER.

TEXT BY BLAKE MILLER | PHOTOGRAPHY BY HEATHER ISON
STYLED BY ASHLEY HOTHAM COX

"I shop absolutely everywhere," says Montgomery. In the dining room, the Georgian table "was a love-at-first-sight find from Classic Attic, while the spider back chairs were a lucky Facebook Marketplace score, as were the draperies that perfectly match the GP & J Baker wallpaper—a sample I held onto for years." The chandelier is from Chairish and the rug was sourced from Instagram, Milagro Collective.

TOP: Montgomery wanted bright, colorful prints throughout the home, so she opted for a Lulie Wallace fabric for the draperies and a Julia Amory tablecloth in the breakfast nook.

BOTTOM: The designer loves to repurpose pieces. The pair of heirloom green chairs that sit in the living room were reupholstered.

The road to Cassidy Montgomery's current home reads a little bit like a storybook tale. After college, she and her then boyfriend, now husband, Cam would walk the streets near her childhood home, always passing this one house blocks away. "Every time," she recalls, "I'd say, 'That's the home I want to live in one day.'" Ten years later, the house went on the market and the couple scooped it up.

With a background in design and experience working for one of Charlotte's top architecture and interiors firms, Cassidy was not turned off by the home's dated interiors and finishes. "I wasn't scared of the linoleum floors or the T-shaped galley kitchen painted coffee brown," she says. "Every single thing needed to be updated; it was a total project, but it was so exciting. We moved in a day before my second daughter was born and the projects started soon after that."

The couple joined forces—Cam is founder and principal of Montgomery Homes—and began updating the home room by room. Though painstaking with three young children, the Montgomerys began by taking the original dark and narrow galley kitchen down to the studs, removing the awkward pass-through island and updating all finishes with custom cabinetry, new appliances, and timeless hard finishes. The rest of the home was painted white, brassy light fixtures were swapped for newer, more modern options, and the dated blinds were removed throughout.

Once the structure was complete, Cassidy put her design wheels into motion, applying her self-described transitional aesthetic to her work. "I love a beautiful antique but I'm probably going to pair it with a Lucite coffee table to balance it out," she says. "I'll have custom window treatments made but will also buy a table from Target. I use what I love. I don't follow any style or





ABOVE: No space was off limits to color (or pattern). The laundry room features a wallcovering by Elliston House complemented by trim and cabinetry in Sherwin-Williams Malted Milk. **TOP LEFT:** The kitchen was taken down to the studs and outfitted with custom cabinetry in Benjamin Moore Van Courtland Blue. **BOTTOM LEFT:** The family room features a mix of found pieces such as the green ottoman and couch she scooped up on consignment at South End Exchange.



guidelines.” One consistent facet of Cassidy’s style, however: color. “It’s my favorite design element,” she says. And no room was off limits. “I insisted on a blue kitchen, and after finding the paint color, I played around with the color strength until landing on the perfect hue. I went for blue again in the living room, and that space went from vast and cold to the warmest, calmest room in the whole house.”

Having gone through the tedious renovation process herself, Cassidy decided to document the journey—and her interior design knowledge—on her Instagram @home.on.the.web. “I retired from the design firm after the birth of my third child and needed a creative outlet,” she says. “That coincided with our home projects, which made my content more authentic. Home on the Web was the result of constantly searching the internet for interior options. Not just another option, but *six or seven more*. Sharing the amazing finds with my audience and chronicling our house progress helps me feel connected to the interiors world I love so much.”

While the majority of the public spaces in the home are updated, Cassidy says the design work truly never stops. “Our design process started the day we moved in and is still in process to this day,” she laughs. “It keeps me on my toes and excited for what’s around the corner!” ♦



ANNA FRENCH



A. H O K E L T D

DESIGN FOR THE TRADE

CHARLOTTE 2122 Freedom Drive, Suite A, Charlotte, NC 28208, 704.358.0277

RALEIGH 1405 Capital Blvd., Raleigh, NC 27603, 919.832.5555

A H O K E L I M I T E D . C O M

SHELL SHOCKED

CLASSIC AND STYLISH, TEXTURAL AND INTERESTING, TORTOISESHELL CAN BRING AN UNASSUMING DEPTH TO DESIGN.

WRITTEN AND PRODUCED BY ANNE MARIE ASHLEY

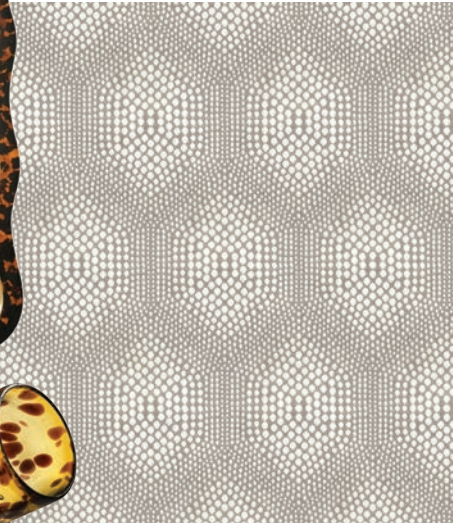


This home office designed by Zandy Gammons of Miretta Interiors showcases a tortoiseshell-finish desk as the showstopping piece.

Rich in history as purveyors of protection, good fortune, and happiness, tortoises are hallowed creatures. Their organic shell patterns found their way into interior design as early as the 1600s. In fact, André-Charles Boulle, cabinetmaker to Louis XIV, introduced and perfected marquetry, a technique in which thin inlays of tortoiseshell backed with metal are combined with wood and metal materials to create a one-of-a-kind finish.

True tortoiseshell traditionally comes from hawksbill turtles, though, thankfully, harvesting has been banned to protect those creatures. Fortunately, the faux tortoiseshell technique has been perfected by artisans and boasts endless applications, from accessories to textiles to walls and ceilings. Versatile, profound, intricate, and organic, tortoiseshell embraces all and expresses all.

1. Melody Mirror / \$2,650 / scullyandscully.com
2. Connect the Dots Tortoise Fabric / to the trade / bassettmcnab.com
3. Handle-less Ice Bucket / \$115 / halfpastsevenhome.com
4. Blonde Tortoiseshell Stud Earrings / \$60 / shopmachete.com
5. Nyala Table in Thanda Tortoise Fabric / \$3,550 / ngalatrading.com
6. Tortoise Shell Wall Hanging / \$187 / reginaandrew.com
7. Tic Tac Toe Cubes / \$187 ea. / reginaandrew.com
8. Picture Frame / \$100 / addisonrossusa.com
9. Rocks Glass Set / \$128 for a set of four / halfpastsevenhome.com



MAKE ROOM
FOR ALL
OF YOU



©2022 California Closet Company, Inc. Each California Closet is independently operated.

CALL OR VISIT US ONLINE TODAY TO SCHEDULE YOUR
COMPLIMENTARY DESIGN CONSULTATION 704.527.5579

CHARLOTTE 224 EAST BLVD

CALIFORNIACLOSETS.COM

CALIFORNIA CLOSETS®

Designer Tracey Wooster's online shop brings approachable art to the masses.



Branching Off

DESIGNER TRACEY WOOSTER IS PAVING THE WAY FOR AN ACCESSIBLE, APPROACHABLE, AND TRANSPARENT ART-BUYING PROCESS WITH HER NEW VENTURE, TRACERY.

WRITTEN BY ANNE MARIE ASHLEY | PHOTOGRAPHY BY HEATHER ISON

Tracery is defined as a “delicate branching pattern,” and designer Tracey Wooster felt it was the perfect namesake for her new venture, which launched in August. “Tracery stemmed from my underlying interests and hobbies,” she says. “I was always on the hunt for art for client projects, and often found myself looking for affordable art.” While she says that traditional galleries are wonderful, they can also be intimidating or a little vague when it comes to pricing.

“Tracery is a one-stop resource that makes art buying transparent and welcoming for everyone, from the beginning art collector to the well-versed,” explains

Wooster. “Every drop of new art will have pieces ranging from around \$150 to \$3,500.”

The first collection includes ten artists who align with Wooster’s general aesthetic—that is, transitional pieces that can be easily placed. “I may expand, include some unexpected pieces as I move forward, but for now, I’m sticking to universal themes and good color schemes.”

Wooster is aiming to grow organically, releasing one or two collections at a time with a selection of artists work in each group. “In my own experience, I didn’t become really interested in collecting until I got my own few



Granville

ANTIQUES | LIGHTING | ACCESSORIES

6815 A-3 phillips place ct., charlotte, nc 28210 | 704.999.6976 | mon-sat 10am-5pm

www.granville-charlotte.com



RIGHT: Landscapes by Amanda Fletcher.



ABOVE: Painting by Caroline Schneider.

TOP RIGHT: This smaller artwork is by Atlanta artist Kelsey Reynolds.



smaller pieces, but then it becomes almost addicting; it spawns a passion for the stories behind the art,” she says. Wooster hopes that, like her, the first piece someone purchases off her site will be the gateway piece to wanting to explore collecting. “It’s nice to feel that you have these one-of-a-kind pieces that no one else has; it feels special and personal.”

Most of the current artists listing on Tracery are from the Southeast and may have a signature look or style, like Marks by Liz Thompson, who uses hash marks to create her paintings, or Kelsey Reynolds from Atlanta, who grew up sewing her own clothes and now creates Greek key patterns with art on the border or in the middle. “I have another artist who’s doing something new altogether as it relates to framing. It’s such an interesting mix, and I intend to keep it that way,” says Wooster.

Most of the first collection will be framed, but future releases will have more unframed canvases and papers that the customer can customize after purchase. “I want Tracery to empower new buyers as well as artists,” she says. “It should be a catalyst for collecting and sparking joy. Alternatively, I want designers to have a source for clients with varying budgets or who need filler pieces. I certainly know I needed it, and now I want to share the love.” ♦



DCI Design Centers International
Home Resource

a Partnership
from Planning to Perfection

CUSTOM CABINETS | APPLIANCES | PLUMBING | TILE
SUB-ZERO - WOLF - COVE | THERMADOR | BOSCH | BLUE STAR | MIELE | LACORNUE | FULGOR



704.926.6000 | DCIHOMERESOURCE.COM | 1300 SOUTH BOULEVARD - SUITE C, CHARLOTTE, NC 28203 | MON-FRI 9AM-6PM



Kristen ENNIS

Designer Kristen Ennis is passionate about the impact interior design has on everyday lives. “I truly believe it is important for our overall health to love and enjoy doing life in our own spaces, whether that’s in your home or at work,” she says. Ennis moved to Charlotte from Cary last year, and is quickly amassing a client list that rivals that of her former hometown.

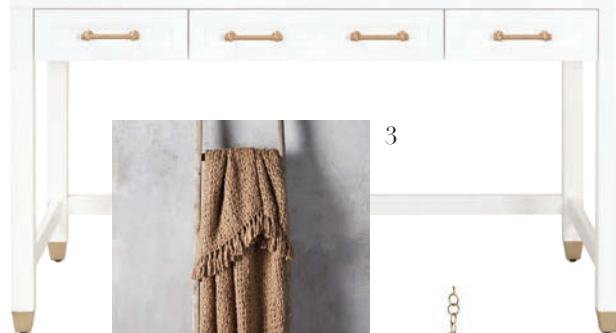
This home office project brought her outside her comfort zone in style, but she nailed the vision by swiftly homing in on what the client was looking for. “The client wanted a bold and fun ‘wow space’ that she could enjoy all day while working from home,” says Ennis. “The Cole & Son wallcovering from Kravet created a fun and interesting Zoom background, and Uttermost mirrors on the opposite wall reflect it back to the homeowner for her enjoyment too!”

Ennis admits that her usual style leans transitional with a casual elegance combined with soft colors and patterns, but says she “put that on hold for this space and enjoyed the challenge of working with bold patterns and a stronger color palette.”



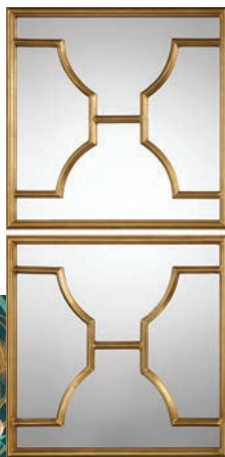
1

2

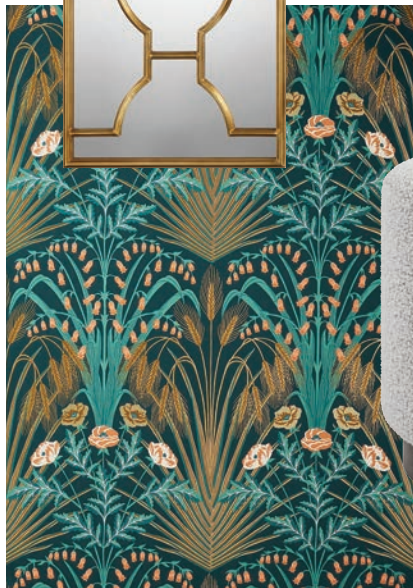


3

7



6



4



5



1. Fluted Planters / \$239–\$598 / westelm.com
2. Stella Desk / to the trade / essentialsforliving.com
3. Chunky Knit Throw in Camel / \$149 / arhaus.com
4. Granville Globe Chandelier / \$1,298 / gabby.com
5. Avila Ottomans in Grey / \$301 / scoutandnimble.com
6. Cole & Son Wallcovering, Blue Bell / to the trade / kravet.com
7. Uttermost Misa Square Mirrors / \$349 / homethreads.com



HIGH COTTON

HOME CO.



INTERIOR DESIGN • FURNITURE GALLERY

PARK ROAD SHOPPING CENTER 4247 PARK ROAD #295, CHARLOTTE, NC 28209
704.335.1220 @HIGHCOTTONCLT WWW.HIGHCOTTONHOMECOMPANY.COM

Create your aesthetic statement.

Gaggenau appliances: individually accomplished, exceptional together.



GAGGENAU

The difference is Gaggenau.
gaggenau.com/us

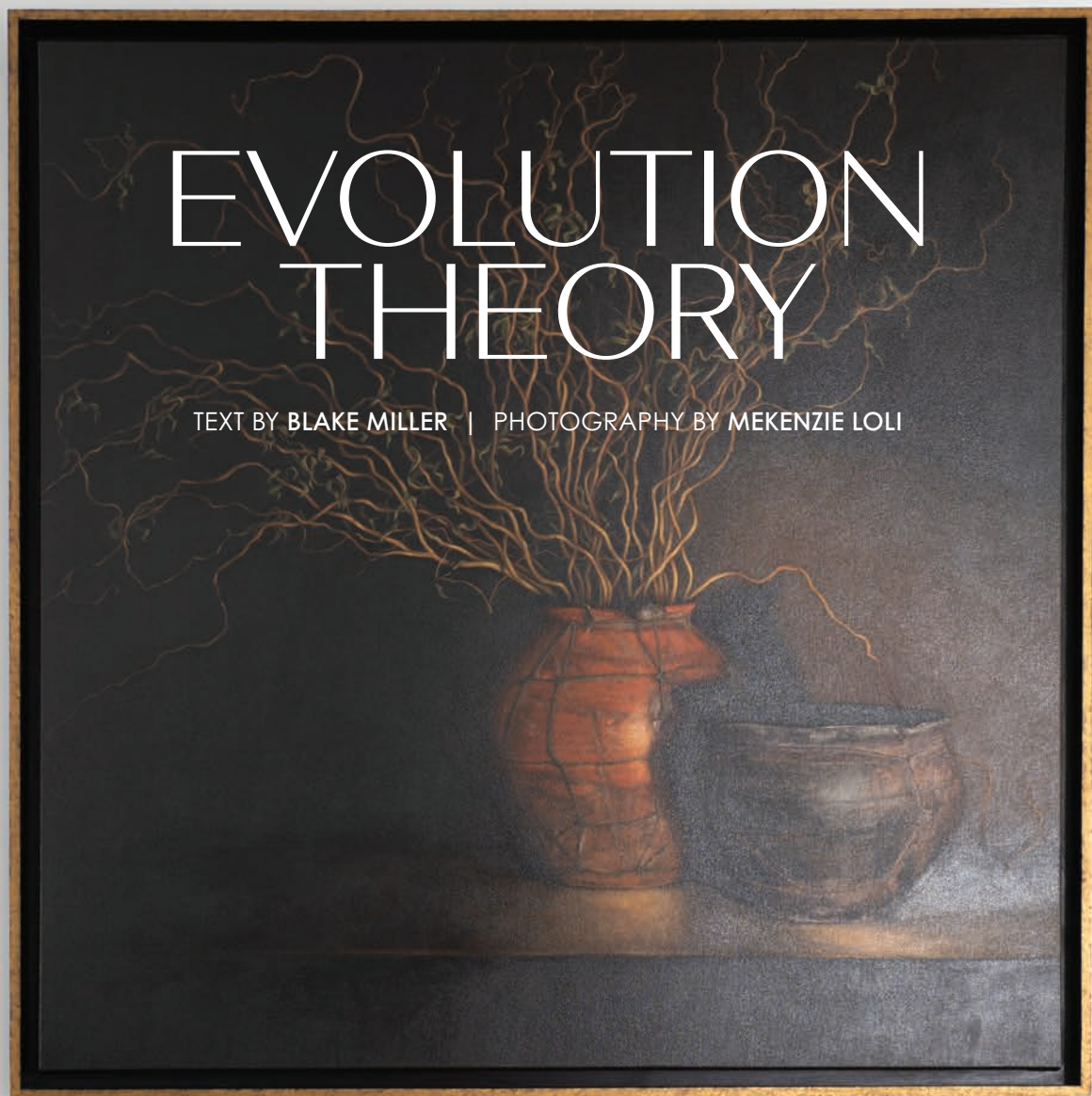
Come see our new Gaggenau display in Charlotte
2430 Queen City Dr. Charlotte NC, 28208

QueenCityOnline.com/Gaggenau

Monday - Saturday 9am-7pm | Sunday Noon-6pm



INTERIORS



DESIGNER BETH CONANT KEIM IS NO STRANGER TO EVOLVING STYLES. WHEN IT CAME TIME TO UPDATE HER PERSONAL HOME, SHE KNEW EXACTLY WHERE TO TAKE THE AESTHETIC.





The guest bedroom features a wallpaper custom designed by Conant Keim and fabricated by The Detroit Wallpaper Company. The design is a darker version of Burberry's signature plaid and reminds the designer of her travels to the UK. The chandelier is by Made Goods and the console table is from Four Hands. **OPPOSITE:** The home's original fireplace was "super traditional," so Conant Keim had it boxed in, and stucco was added by her contractor John Waller. The piece above the fireplace is by artist Mary Calengor from Shain Gallery.



BETH CONANT KEIM is no different from her clients. Trends come and go, styles and tastes change, and people long for something more. When Conant Keim and her husband Keith purchased their 102-year-old Plaza Midwood home in 2001, the designer was just tapping into the Charlotte market and the niche of upscale kids' bedrooms was hers to claim. "For years, when my own kids were younger, I did the fun, crazy color and pattern, and that became my calling card as a designer," she says. "My own house went through its late nineties red-and-yellow color scheme to a multicolor scheme where it was very bright and saturated. And my interior design work was no different."

But when the economy took a hit in 2008, Conant Keim, owner and lead designer of Lucy and Company, felt the stress, and the bold, strong colors in her home left her feeling exhausted. "I needed calm in my life," she explains. "All of those bright colors were stressing me out so I painted everything white and changed everything to neutral tones because it made it feel calmer to come home to. I



Beth Conant Keim, pictured left, loves the hunt for unique, one-of-a-kind pieces for her clients' homes and for her own. In the living room, an antique inlay desk is a vintage find she's kept for years. The console and coffee table are by Noir.



After removing all the upper cabinetry in the kitchen, Conant Keim needed storage for her china and glassware collections, so she designed a pair of custom cabinets fabricated by carpenter Jason Angeldorf for the dining room. The dining table is by Josh Utsey while the dining chairs are vintage.

OPPOSITE: Black subway tiles from Walker Zanger set the tone in the renovated kitchen, which was updated by re-facing the white oak cabinets by Jacob Wolfe and adding new hardware. The countertop is from Harkey Tile & Stone.







To add interest to the kitchen and keep it clean and modern, Conant Keim included a wall of wood fluting. The wall features two hidden doors, one to the adjacent living room and one to the basement.

have been on the neutral bandwagon ever since. And as I got older, my style evolved and it became more classic and timeless with more lasting power.”

The most recent iteration of her home’s design began with the renovation of “a makeshift porch we enclosed when we moved in,” says Conant Keim. The couple ripped it off the house and “built a proper sunroom, which is now my most favorite room in the home.” At the same time, the designer was working on a project in London for a client and “became obsessed with this British vibe, and

that’s what bled into what I was doing at the time. It’s all about nostalgia, sentimental pieces, moody colors, timeless unlacquered brass. It inspired the entire redesign of my downstairs living spaces.”

Conant Keim’s biggest focus, not only for her clients but also for her own home, is a collected, timeless aesthetic. To achieve this in her home she relied on auction sites such as 1stDibs and Chairish as well as flea markets and estate sales to find one-of-a-kind items. “I never want a home full of things that are mass produced,” she says. “It’s all about the hunt to



Conant Keim transformed the one-time enclosed deck/porch into a bright and airy sunroom via tall, oversized windows. "My backyard is pretty mature, so this space feels like you're surrounded by trees and sunlight everywhere," she says. "It's definitely my favorite room in the home." A Phillip Jeffries grasscloth pairs well with a Ralph Lauren sofa swathed in a black-and-white boucle.

The owner's suite was once a colorful kids' playroom, but when Conant Keim desired a more serene place to lay her head at night, the space was transformed into a relaxing oasis for the designer and her husband. A fresh coat of white paint on the walls and a tongue-and-groove ceiling immediately brighten the space, and a midcentury-modern Eames chair and rug by Schwung give it a modern edge.







ABOVE, FROM LEFT: The guest bedroom features artwork by Karen Hollingsworth from Shain Gallery as well as a sconce by Circa and a bed by Four Hands. The powder room was the last room designed during the renovation. Conant Keim outfitted the space with a wallpaper by Schumacher.

find something different, something that means something to you, something that your next-door neighbor won't have."

Such was the case with the custom plaid paper by The Detroit Wallpaper Company that Conant Keim hung in her guest bedroom. "While in the UK, I fell even more in love with Burberry plaid, so I designed a wallpaper that reminded me of my time overseas." Similarly, hanging on a metal coat rack Conant Keim found at Bobo Intriguing Objects is a striped blazer with a crest on the pocket that reminds her of the Henley Royal Regatta on the River Thames in England. "My UK project is on the Thames, so this coat rack and blazer are a nod to that," she explains.

But it's not just the furnishings and accessories that trigger happy memories for the designer. Unsurprisingly, artwork plays a major role in her work and in her home's interior design. "There are all sorts of pieces that have sentimental

meaning to me," she says. "My feeling is that you have to fall in love with a piece of art before buying it for your home. Every piece in my home means something to me." She especially loves to work with local galleries like Hidell Brooks Gallery and Shain Gallery when helping clients find pieces for their homes as well as for her own.

Like most designers, Conant Keim's home is constantly evolving with subtle tweaks here and there, yet the calm, neutral, classic aesthetic remains the same throughout. "It took a lot of years of traveling and researching and working on different design jobs before I could really hone in on what was my personal style," she explains. "You just grow into your aesthetic." As for another major renovation and redesign down the road, Conant Keim says that's not on the horizon anytime soon. "I'm not going to change this house. I have it exactly where I want it." ♦

The living room is a combination of old and new pieces, including an antique inlay desk, a vintage rug, and artwork by J. Louis. A pair of chairs by Lee Industries and an adjacent Noir coffee table provide a place for after-dinner drinks or day-to-day lounging.



THE BINDER

TEXT BY BLAKE MILLER | PHOTOGRAPHY BY BRIE WILLIAMS
STYLING BY KENDRA SURFACE



THE MYERS PARK HOME OF A CHARLOTTE JEWELRY DESIGNER IS THE
CULMINATION OF YEARS OF INSPIRATION.

In the dining room, Dougherty and Dunn opted for a neutral base but added depth and texture via the statement chandelier by Made Goods, caned dining chairs, and wallpaper by Rebecca Atwood. The painting is by McDermott White's friend Abby Kasonik. **OPPOSITE:** McDermott White wanted saturated color, so Dougherty and Dunn delivered with high-gloss dark teal walls complemented by a sofa in the same bold hue. The painting above is by McDermott White's friend Kiki Slaughter. Vintage acrylic chairs and sconces by Arteriors were purchased from Isabella.





JEWELRY DESIGNER Erin McDermott White has collected tear sheets and clippings from various shelter and fashion magazines for as long as she can remember, placing them safely in a binder of inspiration. McDermott White was constantly searching for new visions of her next line of jewelry but also for her own home. “I’m an old school magazine girl,” she laughs. “Anytime I have a moment to myself, it’s all about thumbing through magazines. For years, each time I’m inspired by something, I have torn it out and put it in my binder.”

After McDermott White and her husband Bryan had their third child, the couple began looking for a larger home that could accommodate their growing family while also giving McDermott White space for her eponymous jewelry brand. A stroke of luck and a call from a friend led them to a home underway in Myers Park built by Gerrard Builders and designed by architectural designer Frank Smith. The home was in its infancy, allowing the Whites to choose finishes and





McDermott White needed a designated space to work on her eponymous jewelry brand, and the space above the garage was ideal. The goal was to design a space that reflected her fun personality, so they chose a neutral wallpaper by Harlequin as the foundation and layered with upholstered swivel stools by Four Hands and a vintage rug underfoot. **OPPOSITE:** McDermott White longed for a laid-back, casual California vibe for the home she shares with her husband, Bryan, and their three children.





Swaringen worked with Mudwerk to design the stunning scalloped plaster vanity in the powder room. **OPPOSITE:** The Whites' art collection—which includes a stunning commission of their three children by artist Sally King Benedict in the foyer—was a major component of the home's design.





The goal for the family room was to create a sophisticated space that showcased the couple's love for artwork while simultaneously being livable for their three young children. The family room is their hub, so Dougherty and Dunn added a large Highland House sectional ideal for lounging and layered with custom pillows from Isabella.

put their personal touch into the design. It was McDermott White's opportunity to open her beloved binder brimming with interior design, art, and architecture ideas, and bring them to life.

Having worked with designers Erin Dougherty and Bryn Dunn of Isabella on her previous residence, McDermott White knew she wanted them to design her new interiors. Unbeknownst to her, McDermott White would be getting triple the design help, as designer Amanda Swaringen of Carolina Design Associates (CDA) was already working with Gerrard Builders on the home. Swaringen soon teamed up with Dougherty and Dunn to bring the couple's dream home to fruition with the CDA designer heading up the architectural details and finishes and Dougherty and Dunn leading the interior design efforts. "The partnership with Amanda was amazing," says Dougherty. "We really collaborated to bring this beautiful, modern home to life for Bryan and Erin."

McDermott White's binder spilled over with inspiration for the designers, all of whom came to the same conclusion about the home's interior design after seeing the jewelry designer's tear sheets, swatches, and more: a modern, casual California vibe with pops of color and lots of artwork. "With three young children and my business, my life is busy and chaotic," laughs McDermott White. "I wanted my home to be a place of calm so when I finished work I could come home and feel relaxed." Serene white oak floors and white walls gave way to striking pieces of art by artist and dear college friend of McDermott White, Kiki Slaughter. When Dougherty, Dunn, and McDermott White chose a wallpaper, Swaringen was able to color coordinate the cabinetry color for a seamless look. Likewise, as Swaringen chose tile for spaces such as the bathrooms, Dougherty and Dunn were able to coordinate wallcoverings. "The teamwork was on



ABOVE: In the owner's suite, Dougherty and Dunn chose a custom upholstered bed from Isabella, then looked to artwork by Raleigh artist Jennifer Pino for color inspiration. That art choice led to reupholstering the couple's existing swivel chairs in dark green velvet.

BELOW: Designer Amanda Swaringen worked with the Whites to select hard finishes for the home, including quartz countertops and a marble backsplash in the kitchen. A pair of beaded pendants by Jamie Young Co. and the couple's existing acrylic counter stools by Gabby create a casual yet modern aesthetic.



Swaringen designed the kitchen cabinetry with an armoire-like niche and gallery lighting to display this piece of the California coast from Minted. The white vinyl dining chairs from Isabella are ideal for the couple's three young children.



The living room is the first room guests see as they enter the home, so the designers wanted to create a chic yet comfortable gathering spot for lounging and entertaining. The Dolly Parton artwork by artist Charlie Hanavich and the dark teal beaded mirror from Palecek were layered atop neutral woven grasscloth.

point throughout this entire project,” says Swaringen.

“With this house I really wanted to flex my creativity,” says McDermott White. “I’ve been collecting art, fabric swatches, and pieces of paper since high school, from traveling or things that reminded me of our travels, and I wanted this home to be a place where I could display those things I loved.” In the kitchen, a niche was designed to prominently display a piece of art depicting the California coast. A swatch of wallpaper by Rebecca Atwood that McDermott White had saved for more than a decade was eventually hung in the dining room. Her parents’ tickets from Woodstock are matted and framed in a unique tortoiseshell frame on her bookshelf. For McDermott White, her binder not only inspired the interior design choices but also gave meaning to every piece.

As two years have passed since the couple moved in, McDermott White smiles at how chaotic her home is most days with three kids under the age of eight. “Our home had to be very kid-friendly,” she laughs. Ultimately, it is, but it’s also a beautifully designed space where she and Bryan can relax, their kids can cuddle on the couch, and they can all feel at ease. Looking back through her binder, McDermott White beams. “Our house is exactly what I was collecting for all of those years.” ♦







Swapping the original brown exterior paint for black gives the distinctive A-frame a more modern feel. Sleek Brazilian hardwood decks and lush landscaping add warmth and interest, inviting guests to walk down and explore the shores of Lake Norman. **OPPOSITE:** Designer Meredith Beregovski says she was immediately drawn to the architecture and energy of the home.



GRADE - A RENOVATION

A DATED A-FRAME FINDS NEW LIFE ON THE SHORES OF LAKE NORMAN.

TEXT BY **BRANDY WOODS SNOW** | PHOTOGRAPHY BY **DUSTIN AND SUSIE PECK**
STYLING BY **KENDRA SURFACE**



ABOVE: The arched glass cabinet, a favorite piece from Beregovski's previous home, was the launch point of the kitchen design. Built into the custom cabinetry, it houses her cherished collection of china and is flanked by a pair of sconces to add intimate and feminine appeal.

OPPOSITE: Skylights in the vaulted ceiling bring in ample natural light. Custom cabinetry by Built Wright Woodworks painted in Farrow & Ball's Studio Green grounds the space in its natural surroundings. The hand-painted terra cotta tile backsplash from Renaissance Tile & Bath features Beregovski's own created pattern.

WHEN DESIGNER Meredith Beregovski first saw the Lake Norman A-frame, she immediately felt like it “needed her.” Despite her instantaneous connection to the property, however, those close to her were skeptical. How could this dated fixer-upper ever become her dream home? But Beregovski had a vision—one that took root deep inside her from the very first glimpse.

“When I originally started my home search, I was torn between the lake and the beach, but when I saw this home, I knew immediately it needed to be

my next project,” says Beregovski. “I have always loved the nontraditional layout of an A-frame, and that, along with the picturesque lake views and the untapped potential of the property, made my decision easy. I could have continued my home search for years and never again found anything quite as special.”

She wasn't necessarily looking for a home in need of a renovation, but as owner and lead designer of Georgia Street Design, Beregovski was no stranger to a large project. Initially, she didn't anticipate much





The beaded Palecek chandelier, a favorite of Beregovski's, finds its home in the breakfast nook. A settee and Slate Interiors rug create a crisp, comfortable aesthetic where she and her son can relax, eat, and play games while enjoying the natural beauty outside the expansive windows.





more than a change of flooring and a fresh coat of paint. After closing on the property, however, she unleashed her imagination, and soon the A-frame was taken down to the studs.

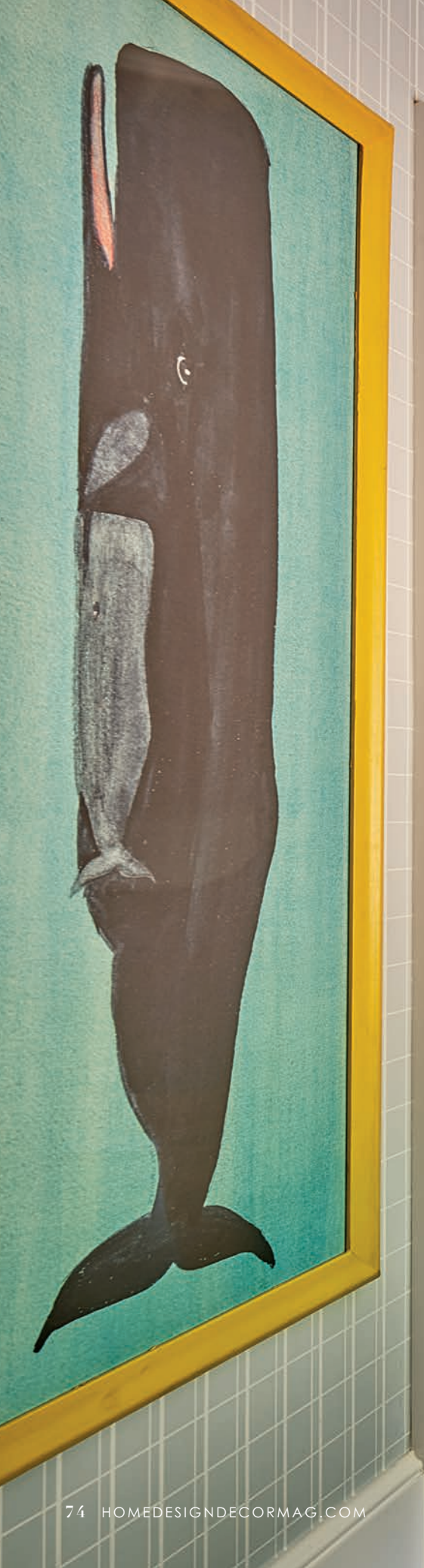
Though there were a few obstacles to overcome during the renovation—a slowing supply chain due to COVID-19 shutdowns and the tricky maneuvering of the spiral staircase—Beregovski’s vision and her expertise in the industry helped navigate a successful project. “I had the skill set to oversee the renovation, so I took the project management on myself,” she says. “I worked with all the trades I established relationships with over the years to help me create my most sacred place to be.”

Beregovski wanted a bright, open home that would feel like a breath of fresh air. She gutted the original galley kitchen and installed skylights to harness natural light into the space. European white oak flooring and shiplap paneling throughout the main floor create a clean, airy



An applied molding, created together by Beregovski and her carpenter, adds interest to the owner's suite walls and ceiling. The vintage bed from Chairish, Matouk bedding, and neutral shades create a room reminiscent of an upscale yet cozy sanctuary. **OPPOSITE:** Beregovski's design focuses on maximizing the potential in all spaces. A coffee station fits comfortably in an off-kitchen nook, featuring drink drawers, an ice maker, and wine storage. A lavender Phillip Jeffries grasscloth and modern fixtures from Visual Comfort give the space a streamlined yet organic appeal.







Bunk beds with storage ledges and Matouk bedding provide ample space for Creighton and his friends to host sleepovers. The reclaimed South Carolina railroad beam and whimsical whale art by Mary Maguire add interest to the room.



The Stark rug and one-of-a-kind live-edge limestone and driftwood coffee table from B.D. Jeffries anchor the family room's design. "The space is a collection of the things we love, showcasing who we are," says Beregovski. "From every angle, you can see our travel souvenirs, favorite candles, and cherished art."

aesthetic that marries well with the home's expansive windows, affording breathtaking lake views. This same concept takes center stage in the upstairs owner's suite, where Beregovski worked with her carpenter to create a unique applied molding wall and ceiling treatment in white. Designed to feel like a cozy upscale hotel, the room's neutral palette and access to large windows create a luxurious retreat at the end of a long day.

Beregovski's vision also revolved around fashioning a home for herself and her eight-year-old son, Creighton, that celebrated their family, so she created a comfortable breakfast nook where they could spend time together and filled the family room with a collection of beloved travel souvenirs, favorite

candles, and books. Creighton's bedroom features a whimsical painting by Mary Maguire that honors the mother-child bond, a rustic reclaimed railroad beam, and bunk beds, perfect for sleepovers. The guest room's soothing green Thibaut grasscloth was specifically chosen to make all guests feel at ease—as if in a cozy cocoon—when visiting the lake house.

The completed renovation is a testament to Beregovski's vision and her hard work to pull it all together. "Each time I walk into the house, I have to pinch myself that it's mine," she says. "Creighton, the dogs, and I would choose being here over any other place and have created many special memories. I am thankful that I had the opportunity to work on a project that is now so near and dear to me." ♦

Soothing green grasscloth by Thibaut and a rattan bed from Serena & Lily are evocative of the lake's calming nature. Beregovski's vision was for the guest space to feel like a cocoon, neither too masculine nor too feminine, and cozy and inviting for all guests.





UNRIVALED

LUXURY

Experience the next level in luxury real estate when you partner with us.

#1 privately owned real estate company in the country. Founding member of Leading Real Estate Companies of the World and Luxury Portfolio International.



MATTHEWS | \$1,595,000
6003 Caliterra Drive
Jesse Samples | 704.400.3760



CHARLOTTE | \$1,395,000
2640 Flintgrove Road
Lauren Campbell | 704.579.8333



CHARLOTTE | \$1,880,000
4322 Old Course Drive
Jean Benham | 704.363.2938



DENVER | \$825,000
5266 Looking Glass Trail
Chris Carlin | 704.236.5510



allentate.luxuryportfolio.com

A HOWARD HANNA PARTNER





mynewfloor.com

DISCOVER WHAT'S POSSIBLE



FLOORING FOR LIVING.

LOCAL SERVICE. ONE LOW PRICE. SEE THE DIFFERENCE.

Choosing the right flooring or carpet can be overwhelming. MyNewFloor.com simplifies your search with our Curated Collection of **wood, carpet, vinyl and tile** from leading manufacturers – all for one low all-inclusive price. Our **design-focused team** is here to help you select the products that fit your home and budget. And our **certified installers** will do the job right – quickly, accurately and professionally.

Visit one of our Charlotte area showrooms, and you'll see why thousands of satisfied customers have chosen MyNewFloor.com as their go-to flooring partner.

704.325.5952

SOUTH CHARLOTTE

Blakeney Town Center
9716-C Rea Road
Charlotte, NC 28277

SOUTH END

Factory South
1300-C South Boulevard
Charlotte, NC 28203

LAKE NORMAN

Village at Oakhurst
9606-A Bailey Road
Cornelius, NC 28031

mynewfloor.com



COX DOOR COMPANY

HOME | COMMERCIAL | RESIDENTIAL | SALES | SERVICE



Cox Door is 35 years in the Charlotte market. We stand behind each and every door, install, service and preventative maintenance that we do. With great craftsmanship comes great responsibility. This is why we also stand behind the quality accessories that are part and parcel of these great doors. We fix, maintain, source and install any door or part that you need. From coils, to openers, advice of maintenance; call us and we will send our experts in the field to you.

COXDOOR.COM | 704-821-8898 EXT. 213 | PHILCOX@COXDOOR.COM



RESOURCES

A RETURN TO COLOR

ONE DILWORTH HOME WILL LEAVE
TOUR-GOERS TICKLED PINK.

WRITTEN BY BRANDY WOODS SNOW

Needing more space to raise their two children, Ed and Melody McCutcheon purchased a three-story Craftsman in Dilworth in 2013. With four bedrooms and four-and-a-half bathrooms in 4,000-square-feet along with three expansive porches on which to enjoy their friendly neighborhood, the home at 605 McDonald Avenue was perfectly suited to their needs. After ten years, the McCutcheons decided it was time for a facelift. On the recommendation of a friend, they contacted Tom Holley, owner of Crazy Jane's.

"The McCutcheons were looking for a comprehensive first-floor redo that was light, airy, and colorful," says Holley. "Melody loves pink, and pink is color of the year for 2023."

Holley's varied design and retail background and frequent cross-country travels gave him the perfect vantage point

for tailoring the McCutcheons' space to their individual tastes, employing an exciting mix of textures, finishes, and colors (including a broad array of pink) to create a comfortable, welcoming space with the right amount of sophisticated glamour.

The result is a fashion-forward home that Holley says points to a very relevant movement happening now in interior design. "We're witnessing a return to color in the industry along with light woods that create clean and airy aesthetics with dramatic pops of color and texture," says Holley.

The home design started off in the dining room, where Melody requested an open, airy space that celebrated her favorite color. Holley chose a distinctive wallpaper, designed by local artist Windy O'Connor, and echoed the coral-toned pink



DARIUS EVANS



“WE’RE WITNESSING
A RETURN TO COLOR.”

—TOM HOLLEY

pattern with a painted ceiling. The wooden-bead chandelier with gold frame and jute accents exudes a sense of casual elegance, echoed by the gold and acrylic cabinet pulls. The cabinet’s chevron-patterned doors marry well with the acacia bleached wood dining table. A gold-framed Windy O’Connor Chica scarf titled *Beauty Of Us All* adds an extra layer of interest and color.

In the sitting room, color took center stage with a lush mauve-hued sofa and chair against dark teal walls and an airy aqua-toned ceiling. A showstopping crown chandelier in gold leaf and a gold metallic root console table give the space a touch of glam. Another Chica print and pillows by Windy O’Connor complete the aesthetic.

In the great room and breakfast nook, color is infused through bright custom Windy O’Connor pillows and overdyed fuchsia Turkish ottomans. The neutral Oushak rug, bleached-root pedestal table, and rope-and-teak chairs combine with the simply adorned expansive windows to harness the natural light and create the open, airy ambiance Melody loves. Two distinctive chandeliers—the metallic gold lotus in the great room and the starburst agate and gold fixture in the breakfast area—impart a refined elegance in the design.

The McCutcheons’ home is one of six homes featured on the 49th annual Dilworth Home Tour, running September 15–16. Crazy Jane’s is a proud 2023 Dilworth Tour Gold Sponsor.

“I’ve been involved with the Dilworth tour for more than twenty years, and it’s a terrific opportunity to meet so many people and reconnect with regular attendees each year,” says Holley. “It’s so gratifying to hear people tell me that they’ve been eagerly waiting to see my design work on the tour.” ♦



THE *FALL* EXHIBITION

MOMENTUM GALLERY INTRODUCES THE WORK OF FIVE DIVERSE ARTISTS IN ITS FALL EXHIBITION SEASON.

WRITTEN BY DANA W. TODD

Every two months, there is a fresh group of exhibitions at Momentum Gallery in downtown Asheville. The fall shows, which open August 31 and run through November 11, feature five artists who work from their studios either in North Carolina or the Pacific Northwest. Themes of rhythmic mark-making and landscape inspiration are a perfect accompaniment to the breathtaking colors of fall in the Blue

Ridge mountains that surround the gallery. “This collection highlights the diversity found in the gallery and showcases the breadth of fine craft and handwork by world-class makers,” says owner and curator Jordan Ahlers.

Durham, North Carolina, oil painter Rachel Campbell takes liberties with the punchy colors she uses to paint landscapes, home interiors, and “view from a window” scenes that



ART BY RACHEL CAMPBELL

“THE HIGHLY CURATED SPACE FEATURES A DIVERSE COLLECTION OF MUSEUM-QUALITY WORK IN A VARIETY OF MEDIA AND PRICE POINTS.”

—JORDAN AHLERS



incorporate loose brushwork and a tropical feel. “Her work is light, bright, and cheery, taking inspiration from her surroundings,” says Ahlers. Originally from New Zealand, Campbell’s artwork is found in private and public collections internationally.

Momentum Gallery discovered emerging artist Samantha Bates fresh from graduate school. Her third solo show at Momentum, Bates’s exhibition features paintings, textile work, and mixed media compositions. Her artistic practice is defined by repetitive markings, using dots, dashes, loops, stitches, coils, and punched holes to create representations of her experiences in the wilderness. Her labor-intensive technique results in contemporary art with an unexpected use of color. “Samantha gets engrossed in the interwoven pattern of branches and roots,” says Ahlers. “The layering of embroidery and painting is a fresh approach.”

Retired architect Vicki Grant is a ceramic and mixed media artist whose artwork series, including *Windows to the Earth*, incorporates beads, precious stones, fossils, minerals, crystals,



and found objects into carved and painted porcelain. Color and texture prevail in this series as well as in her newest collection, *Celestial Landscapes*, debuting this fall. This collection’s circular compositions can be combined into unique displays on walls or placed on tabletops in plate stands. Inspired by a recent trip to New Zealand, the Botanical series shows her interpretations of tree forms and hand-built flowers with a nod to her background as an architect.

Renowned sculptors Christian Burchard and Kristy Kún round out Momentum’s fall exhibitions, showcasing Burchard’s work in wood and Kún’s dramatic hand-felted textiles. Burchard uses Pacific madrone wood, which twists and buckles as it cures to form unique shapes with a sense of movement. Kún occasionally collaborates with Burchard by nesting felt pieces inside a wooden form, and most of her textile artwork conveys a sense of current and flow, echoing natural formations of water, earth, and sky. Their exhibition features individual works as well as a selection of collaborative pieces.

“We love working with both designers and individuals,” says Ahlers. “It all starts with a visit to our gallery or our website. The highly curated space features a diverse collection of museum-quality work in a variety of media and price points.” ♦

THE *SECRET* WEAPON

A. HOKE LTD.'S COMMITMENT TO THE DESIGN COMMUNITY IS NOT JUST FOR SHOW.

WRITTEN BY BRANDY WOODS SNOW



Katie Emmons Design

Interior designers are known for their vision. But behind every designer's vision is a logistical, well-oiled machine required to bring that concept to fruition. Selecting the perfect fabrics and colors, accessing the best product lines in a timely manner, and coordinating delivery can be daunting tasks for designers looking to fulfill their clients' dream spaces on a tight timeline.

A. Hoke Ltd.'s knowledgeable staff makes it a designer's secret weapon. Highly trained and up-to-date on all industry trends, they partner with designers to source the best product lines and offer valuable insights for every project.

Melissa Godwin, owner and interior designer of Crown Design Group of North Carolina, has relied on A. Hoke Ltd. for more than three decades and has watched them grow from a small boutique showroom to the premier one-stop-shop they are today.

"A. Hoke Ltd.'s products encompass different design styles, making them a useful tool for all of our projects. Their staff is wonderful at what they do, and their knowledge and professionalism make our job easier," says Godwin. "Time is a huge commodity for myself and my team, so using them cuts down on trips to multiple vendors and allows us to work more efficiently."

Katie Emmons, owner of Katie Emmons Design, has collaborated with A. Hoke Ltd. for more than fifteen years and relies on their skilled staff and quality product selection to ensure her clients' designs are not only beautiful but also handled with the utmost care.



Crown Design Group of North Carolina



“THEY GENUINELY CARE ABOUT DESIGNERS.”

—KATIE EMMONS

“It’s convenient and easy to work with one vendor that you trust completely with your orders,” says Emmons. “We know and love the staff. They also carry the best lines in the industry, which means I can sell furniture with the comfort of knowing that they have a strong commitment to quality.”

Now, with product and delivery lead times extended across an industry where time is of the essence and deadlines are always looming, A. Hoke Ltd. has stepped up to help designers with showrooms stocked with floor samples and loaded with lamps, wall art, and project finishers that can all be purchased on-site.

“Their expansive showroom gives our clients a good feel for how things will look—even custom orders—since they are able to see, touch, and sit on products from multiple vendors,” says Godwin. “In this age of instant gratification, anything we can get more quickly for our clients is a big

advantage. The amount of furniture inventory they carry on their showroom floor has been a huge benefit in helping us educate our customers on different brands and ultimately make sales.”

Godwin’s recent client purchased a second home in Charlotte and was on a tight timeline to get it furnished. A. Hoke Ltd.’s vast inventory enabled them to spend less than two hours in the showroom picking out upholstery, and the items were ready and delivered three days later.

It’s this kind of service and dedication to the design community that keeps clients coming back for more.

“A. Hoke Ltd. is a company of great integrity,” says Emmons. “In my experience, they always do the best thing, not only for me as a designer but also for my clients. They genuinely care about designers.” ♦

For more information, contact A. HOKE LTD. at 704-358-0277 or visit AHOKELIMITED.COM.



LUCY BUTLER



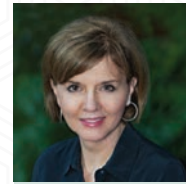
MELISSA COLLINS



LEIGH C. CORSO



CAY CRAIG



REBA HATFIELD



LINDA HENLEY



THE HUNEYCUTT
TEAM



CHIP JETTON



BECKY MCGRATH
TEAM



HEATHER
MONTGOMERY



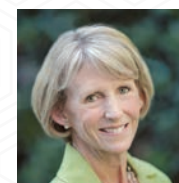
LINDSAY
REDFERN



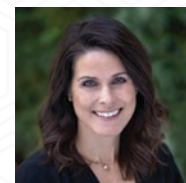
SARA ROCHE
TEAM



LISA RUPP



LISA WARREN



HEATHER
WOLKING

Leading
REAL ESTATE
COMPANIES
OF THE WORLD


CottinghamChalk


LUXURY
PORTFOLIO
INTERNATIONAL

704.364.1700 | COTTINGHAMCHALK.COM

Swim in Style

Automated • Water- & Energy-Efficient • Saltwater Purification

#1-Ranked Pool
Builder in America!
—9 years in a row—



**Voted Most Trusted
Lowcountry Pool Builder**



100%
Financing
oac



DESIGN CENTER &
3 DISPLAY POOLS
843.552.6000



Free brochure,
complete estimate &
3-D design concept



Lic. #G116057

BLUE since 1954
HAVEN
POOLS & SPAS
World's Largest!



OFFICE VISIT

BY BETH CONANT KEIM



DURING THE HEIGHT OF THE PANDEMIC, I RECEIVED NUMEROUS CALLS FOR A “PRETTIER HOME OFFICE WITH A GREAT BACKDROP FOR VIRTUAL CALLS”—NOT SURPRISING CONSIDERING THE NEW WORK-FROM-HOME DYNAMIC.

This project happens to be one of those requests. The office is the first thing you see upon entering this Myers Park home, and I wanted to make it dramatic. To accomplish this, I painted the walls dark, then added unique furniture pieces and art in various styles and mediums, which I found at B.D. Jeffries one lucky day—everywhere I turned, I happened upon amazing art pieces.



MEKENZIE LOU

THE OFFICE IS THE FIRST THING YOU SEE UPON ENTERING THIS MYERS PARK HOME, AND I WANTED TO MAKE IT DRAMATIC.

These days, many front-sitting rooms are being converted into home offices; the goal is to give the office space a homey feel. During the design of this space, I paid attention to the foyer as well as the dining area, keeping the colors simple but strong. I moved the new foyer fixture back and centered it over a round table, one that was as big as possible while still allowing for walking room.

The dining space was all about the black Sherrill chairs mixed with a custom dining table by Josh Utsey. An antique mirror, a new chandelier, and a large Stark rug in a solid color define the charming room, consisting of a simple, clean color palette and striking pieces.

It was important to me that the entire first floor be visually cohesive. Revamping the main living space to complement the dining room and office was my goal. We removed the standard flanking bookcases and added a book-matched patterned Walker Zanger tile on either side, which modernized the view. A simple change of color to the fireplace via a faux finish transformed it at a fraction of the cost of replacing it. New furnishings and textiles completed this space.

Not only do the homeowners have a modern, art-filled office with a backdrop to flaunt, but they also have adjacent rooms that are equally stunning. ♦





WANING DAYS, WAXING VENTURES

BY JIM NOBLE

THE SUMMER WIND-DOWN IS BEGINNING. WE'RE SAYING SO LONG TO BEACH VACATIONS, POOL DAYS, AND LAID-BACK NIGHTS WATCHING FIREFLIES FROM THE PORCH.

Entering fall can be a welcome change, though. Our social calendars fill up with school events, sports, and holidays. These

gatherings on the horizon are one reason we are so proud to introduce our newest culinary venture: Field Pea Catering.

If you've known us for a long time, you know catering has always been a part of what we do, both through Copain and through our restaurants. With Field Pea, we've centralized our catering offerings to bring you great menus for all types of events, from tailgates to corporate lunches to wedding





WE ARE SO PROUD TO
INTRODUCE OUR NEWEST
CULINARY VENTURE:
FIELD PEA CATERING.



receptions. That means if you want barbecue from Noble Smoke *and* mac and cheese from Rooster's *and* desserts from Copain, you can do that with one phone call—in addition to Field Pea's own offerings such as grazing tables, hors d'oeuvres, carving stations, and plated entrees.

Field Pea is named for the crop, which *The Local Palate* has called “the most Southern of the legume.” It goes by many other names, such as crowder peas, pinkeye peas, Big Red Ripper, and more. Aside from it being my favorite vegetable, chock-full of flavor and nutrients and memories from my grandfather's garden, we chose Field Pea for the name because of what this vegetable does for the earth. Across the rural South, the peas are planted in rice and corn fields to replenish the soil with nitrogen and allow future crops to thrive, leaving the soil better than it was before. They represent simplicity, nourishment, replenishment, and taking care of those around you. With that, Field Pea events will be a celebration of nature's rewards.

We look forward to celebrating with you. ♦

JIM NOBLE is the executive chef and owner of **NOBLE FOOD & PURSUITS**.
For more information, visit **NOBLEFOODANDPURSUITS.COM**.



CRAFTSMAN Cabinets & Furniture

KITCHENS | LIVING | DINING | BEDROOM | OFFICE



Custom Amish-Built Cabinets & Furniture

Available in Maple, Cherry, Hickory, Reclaimed Barnwood, and more

U.S. 321 North between Hickory & Blowing Rock | 2994 Hickory Blvd, Hudson, NC 28638
828.572.4424 | CRAFTSMANCABINETSANDFURNITURE.COM

All of our products are proudly  **MADE IN AMERICA** 



Bring your *appetite* *for discovery.*

We'll bring you the showroom
experience you've been waiting for.

When you walk through our doors, bring an idea.
A dream. A vision. Our showroom is designed to
inspire you with on-site chefs, product experts,
and exclusive events - all so you can fully
experience everything your kitchen can be.

Scan to book
an appointment.



Charlotte • 127 W Worthington Avenue, Suite 180, Charlotte, NC 28203 • 704-375-6025



— SHOWROOM —



When it comes to elevating your interior design, the fabrics you choose can make all the difference.

The Interior Alternative, with its base in Charlotte, North Carolina, is your go-to source for high-quality, fashionable fabrics that can transform your home. With unparalleled quality, endless design possibilities, exceptional customer service, and professional upholstery services, they are committed to helping you create stunning interiors that reflect your unique style. Explore their collection, unleash your creativity, and witness the remarkable impact their fabrics can have on your space.

Trust The Interior Alternative to provide the perfect fabrics and expert upholstery to bring your design dreams to life.

Interior Alternative is your one-stop shop for reupholstery.

INTERIOR ALTERNATIVE

11435 Granite St. Ste. D | Charlotte, NC 28273 | 704.251.4030

THEFABRICOUTLET.COM



Charlotte

HOMED

DESIGN & DECOR[®]

SUBSCRIBE NOW!
hddmag.co/subscribe_cli

advertise: homedesigndecormag.com/advertising

HOMEDSIGNDECORMAG.COM /  [@HOMEDSIGNDECOR_CHARLOTTE](https://www.instagram.com/HOMEDSIGNDECOR_CHARLOTTE)

ARTS & EXHIBITIONS

SPOTLIGHT

TERESA HUBBARD/ ALEXANDER BIRCHLER: FLORA

BECHTLER MUSEUM
OF MODERN ART

September 23–January 21, 2024
bechtler.org

Teresa Hubbard/Alexander Birchler: Flora features the Swiss American duo's double-sided film installation based on their discoveries about the previously unknown American artist Flora Mayo, who studied in Paris in the 1920s alongside Swiss sculptor Alberto Giacometti, and with whom she had a romantic relationship. While Giacometti is one of the most celebrated artists of the twentieth century, Mayo had been relegated to a footnote in Giacometti scholarship. Hubbard and Birchler reframe this story from a feminist perspective and bring Mayo's compelling biography to life through a hybrid form of storytelling that deftly interweaves narration, reenactment, and documentary.



STEPHANIE J. WOODS: WHERE THE SUN SHINES

HARVEY B. GANTT
CENTER FOR AFRICAN-
AMERICAN ARTS+CULTURE
Through October 29
ganttcenr.org

An immersive dreamworld created by Stephanie J. Woods, *where the sun shines* transports the viewer to a place where the sun always shines, the walls whistle, and Venus and Serena Williams play a never-ending tennis match in the sky. Inspired by the yellow walls of her childhood bedroom and the message Woods wrote on her bedroom door, this new body of work contains photographs, sculptures, textile works, and an immersive floor and video installation.



MARCY GREGG: THE COLOR OF LIGHT

ANNE NEILSON FINE ART
October 2–November 1
anneneilsonfineart.com

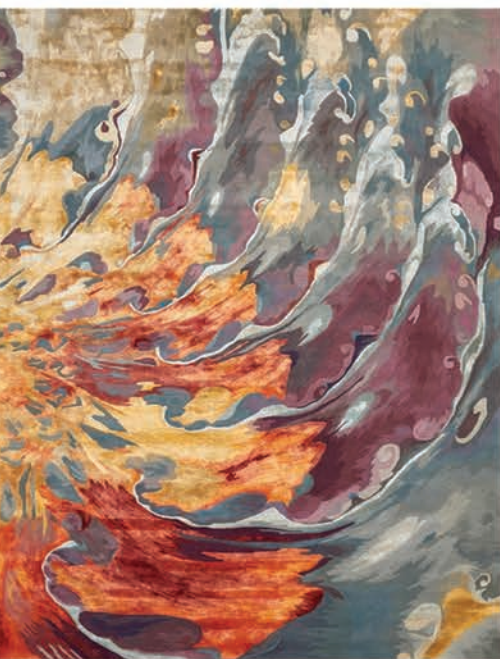
Charlotte artist Marcy Gregg's final solo exhibition, *The Color of Light*, honors her journey with painting and celebrates her culminating career, all while never wavering

from its foundational mission: to send out the Word of God. Each piece has a Bible verse as its foundational layer—an integral part of her process—inspired by her dad and affirmed by her faith. *The Color of Light* was also inspired by the nature of what color is: a visual attribute of the things that result from the light they emit and reflect. Answering color's invitation to illuminate our light within, Gregg intended every color, stroke, and shape to reflect the Truth it was layered upon and reckon us to consider what the colors of our life look like. Opening reception on October 12 from 6 p.m. to 8 p.m.

CLOCKWISE FROM TOP: ART BY STEPHANIE J. WOODS;
ART BY MARCY GREGG; TERESA HUBBARD AND ALEXANDER BIRCHLER



Rugs • Furniture • Lighting • Accessories



Rug&Home
rugandhome.com

Experience the Extraordinary
(877) 784-4663

Kannapolis
3333 Cloverleaf Prkwy
(704) 200-2730

Pineville
11705 Carolina Pl Prkwy
(980) 771-3519



OASIS OUTDOOR

FURNITURE + ACCESSORIES

OASISOUTDOOR.COM
11729 CAROLINA PL PKWY.
PINEVILLE, NC 28134
704.541.0892



Designed for Living, Built for Life



PIKE PROPERTIES

44th Annual
Grand Opening & Sale
begins early October!



11729 CAROLINA PLACE PARKWAY PINEVILLE, NC

704.541.0892

PEPPERMINTFOREST.COM

The Designers Marketplace

trade and retail showrooms



803-681-5100

thedesignersmarketplace.com

9481 Yarborough Road, Fort Mill, SC 29707






GARRETT P. NELSON
STUDIO
creating home



TROHA

INTERIORS

For a Professional chef and her family, staying in their Elizabeth home was important, but they knew they needed to completely reconfigure the space if they wanted to stay long-term. They enlisted the help of Michelle Troha, founder and principal designer of Troha Interiors, and Garrett P Nelson, founder of Garrett P. Nelson Studio, who encouraged them to think bigger than just a remodel. In the end, the home was taken down to the studs and rebuilt with function and beauty in mind.


"We focused on a clean and bright kitchen that could still withstand heavy use," says Troha. "Because we started with this central neutral palette, we had an opportunity to infuse a lot of character in the kitchen's adjoining rooms. We had a lot of fun!" The family's breakfast nook, situated right next to the kitchen, features a Sister Parish wallpaper and a Visual Comfort light fixture. In the mudroom, the Morris & Co. wallpaper added vintage charm. "Even though this home was practically a new-construction project, the aim was always to bring back some of the old soul they had in their previous home."

Troha also credits the success of the project to the collaboration with talented, local artisans. A custom concrete sink by Mudwerk and a zinc-studded countertop in the bar area were small, unique details that set the project apart. "The arches Garrett created also added such character—it's a beautiful backdrop for this family to live in," says Troha.



INFO@TROHAINTERIORS.COM

 [TROHAINTERIORS](https://www.instagram.com/trohainteriors)



the **art of** **seating** 200 *years of* **american** **design**

SEPTEMBER 16, 2023-FEBRUARY 25, 2024

MINT MUSEUM UPTOWN
AT LEVINE CENTER FOR THE ARTS



The Art of Seating: 200 Years of American Design is generously presented by PNC Bank. Additional individual support is kindly provided by Sarah G. Cooper, Lucy and Hooper Hardison, and Kati and Chris Small. The Mint Museum is supported, in part, by the Infusion Fund and its donors. IMAGE: Roy Fox Lichtenstein (1923-97), *Graphicstudio*, University of South Florida (United States, 1968-), Beeken Parsons (United States, 1983-), *Brushstroke Chair and Ottoman*, 1986-88, laminated white birch veneer, paint, clear varnish. Collection of the Thomas H. and Diane DeMell Jacobsen Ph.D. Foundation. L2023.63.4a-b © Estate of Roy Lichtenstein

WALTER SCOTT LENOX AMERICAN BELLEEK

Mint

SEPTEMBER 23, 2023–JANUARY 21, 2024

MINT MUSEUM RANDOLPH



WELLS
FARGO

The Private Bank



Walter Scott Lenox and American Belleek is generously presented by Wells Fargo Private Bank. Individual sponsorship is kindly provided by Hillary and Fairfax Cooper, Laura and Mike Grace, Mozelle DePass Griffith, and Liz and Dave Shuford. The Mint Museum is supported, in part, by the Infusion Fund and its donors. IMAGE: Willets Manufacturing Company (Trenton, NJ, 1879-1909), Walter Scott Lenox (American, 1859-1920), *Pitcher* (detail), 1887-93, Belleek porcelain, pink luster glaze, gilt decoration. The Mint Museum. Museum Purchase: Funds provided by Daisy Wade Bridges. 2003.97.6

704.337.2000 | 2730 Randolph Road, Charlotte, North Carolina 28207
mintmuseum.org | @themintmuseum

LYNN BLACKWELL

INTERIOR DESIGN

STUDIO + SHOWROOM



LEE INDUSTRIES LILLIAN AUGUST FOR HICKORY WHITE HICKORY CHAIR
HICKORY WHITE CURREY & COMPANY THIBAUT DESIGN

LYNNBLACKWELL.COM | 223 MAIN ST. FORT MILL, SC 29715 | 803.802.4663