

Triangle

AUGUST / SEPTEMBER 2022

HOME

DESIGN & DECOR®

PLUS:
DREAMING
IN FRENCH

BOHEMIAN
CHIC

FUNCTIONAL
Style





PROUDLY INTRODUCING

1019 COWPER DRIVE RALEIGH, NORTH CAROLINA

GRAND CUSTOM ESTATE IN HAYES BARTON

OFFERED AT \$5.2 MILLION | SITS ON 1.26 BEAUTIFULLY MANICURED ACRES

5 BED

6 BATH

2 HALF BATH

9,381 SQ. FT.



SH THE SHERI HAGERTY GROUP
Hodge & Kittrell Sotheby's International Realty

919.862.6258 | sheri.hagerty@hodgekittrellsir.com | sherihagerty.com
Follow Us @[sherihagertygroup](https://www.instagram.com/sherihagertygroup) | Member - Luxury Home Marketing Group



*This dinner
started here.*



The Sub-Zero, Wolf, and Cove Showroom will help you create a kitchen that's uniquely yours. On-site chefs, product experts, and inspiring designs will help you envision the possibilities for your home – and all of the delicious moments to come.





SCHEDULE A SHOWROOM APPOINTMENT

127 W Worthington Avenue, Suite 180, Charlotte, NC 28203 • (704) 375-6025 • subzero-wolf.com/charlotte



TRIANGLE'S PREMIER OUTDOOR LIVING SPECIALISTS

COVIS
creating outdoor visions *in stone*

 covis-stone.com 
919.977.3284

CAROLINA Glass & Mirror



Photography: www.capturedzeal.com

FRAMELESS SHOWER DOORS

3501 INTEGRITY DRIVE GARNER, NC 27529
919.662.9050
www.carolinaglass.com

BARDI DESIGNS



808 SALEM WOODS DRIVE, SUITE 205 RALEIGH, NC 27615 919-803-5251

www.bardidesigns.com

AUGUST / SEPTEMBER 2022



FEATURES

40 FOREVER HOME

When called on to design a family's new custom home, Lauren McKay creates a space that ties in everything near and dear to them.

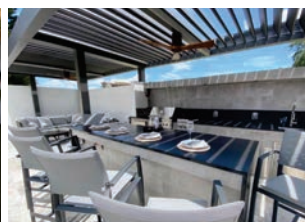
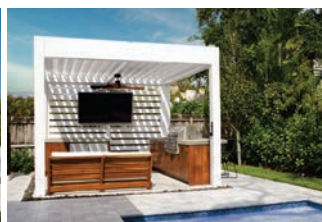
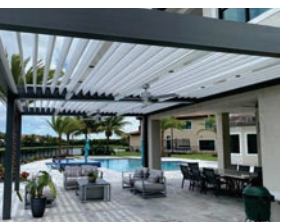
52 ALL THINGS BRIGHT AND BEAUTIFUL

A couple finds an old home on a big lot in Raleigh and enlists Miretta Interiors to implement a design that reflects their style.

62 MAKEOVER MAGIC

After a beloved beach home is destroyed by Hurricane Florence, designer Liz Goldberg's small remodel turns into a whole-home renovation.

CREATE YOUR CUSTOMIZED OUTDOOR OASIS



LUXURY FIBERGLASS | GUNITE POOLS AND SPAS
HARDSCAPES LOUVERED PERGOLAS OUTDOOR LIVING

GODFREY & JONES

30 YEARS' EXPERIENCE

godfreyandjones.com



919.271.1780

Residential and Commercial | General and Landscape Contractors

AUGUST / SEPTEMBER 2022



DWELL

18 MARKET

We've assembled the latest and greatest collaborations and collections to elevate the most utilized rooms in the home.

24 STYLE

A couple designs a uniquely personal, comforting, and practical kitchen with a French-country aesthetic.

28 DESIGN

Three local designers share their distinctive bathroom designs with pro tips alongside dos and don'ts.

34 PALETTE

The romantic and delightfully dainty hue of dusty rose is a petal-like pop of pretty that does not disappoint.

36 DESIGN BOARD

An expert on tailored design and stylish furnishings, Carole Hollowell creates a timeless bedroom for a client's college-aged daughter.

RESOURCES

72 COLOR ME HAPPY

Virginia Gest of Kitchen & Bath Galleries talks kitchen color trends and more.

76 AN INSPIRED AGENDA

Recognizing that every detail is important, designer Betsy Bardi has a profound impact on her clients' homes.

80 CELEBRATING HOME

The Green Chair Project's 2022 Chairity event addresses the increasing needs of families living without basic essentials.

84 KEEP YOUR COOL

Custom window covering provider Budget Blinds strikes the ideal balance between aesthetics and practicality.

CONTRIBUTORS

86 INNOVATIVE DESIGN

Courtney Vaughn
Healthy Hydration

88 BUILDING A BETTER HOME

Jon Rufty
Ageless Design

90 SET IN STONE

Sunny Surana
Meet You at the Gallery

92 LUXURY OUTDOOR LIVING

Will Strobe
Real-Time Design

94 OUTDOOR OASIS

David Payne
Break the Rules

SPOTLIGHT

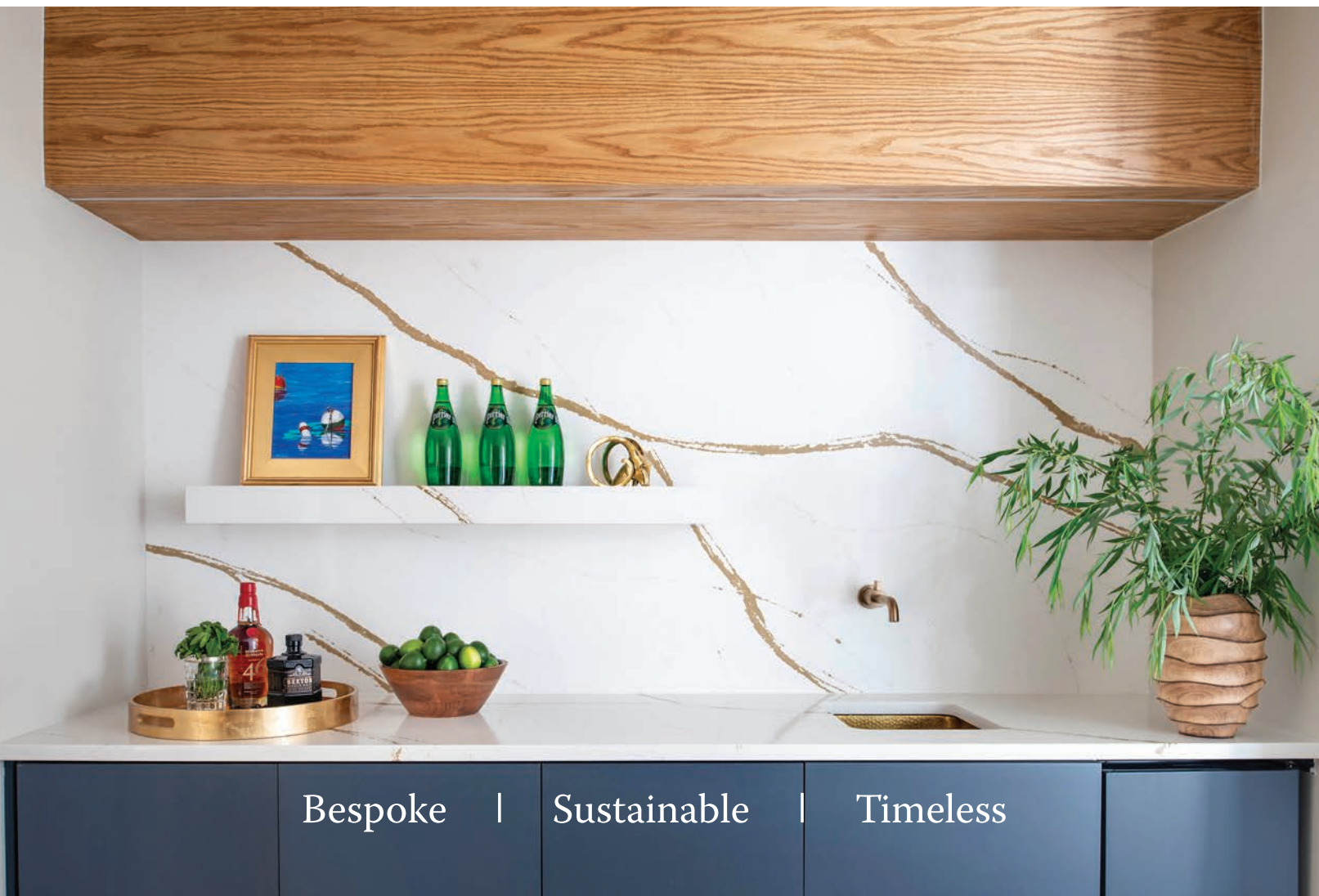
12 FROM THE EDITOR

96 ARTS & CULTURE SPOTLIGHT

Bartone Interiors

www.bartoneinteriors.com

(919) 679-2303



Bespoke

|

Sustainable

|

Timeless



We both love to cook. Blake happily spends hours planning and cooking healthy meals for her family and coming up with new and joyful ways to eat clean. I spent many holidays sidled up to my mom in the kitchen, helping her cook old family recipes and watching closely as she churned out comfort food that brought smiles to our faces. It's something that brings a warm satisfaction to me now as I cook my own versions of her recipes. Ask anyone and they will tell you that the heart of the home is undeniably the kitchen. Gathering for family meals, late-night conversations over milk and cookies, or morning cuddles while sipping coffee, the kitchen will inevitably be where we spend many of our most precious moments.

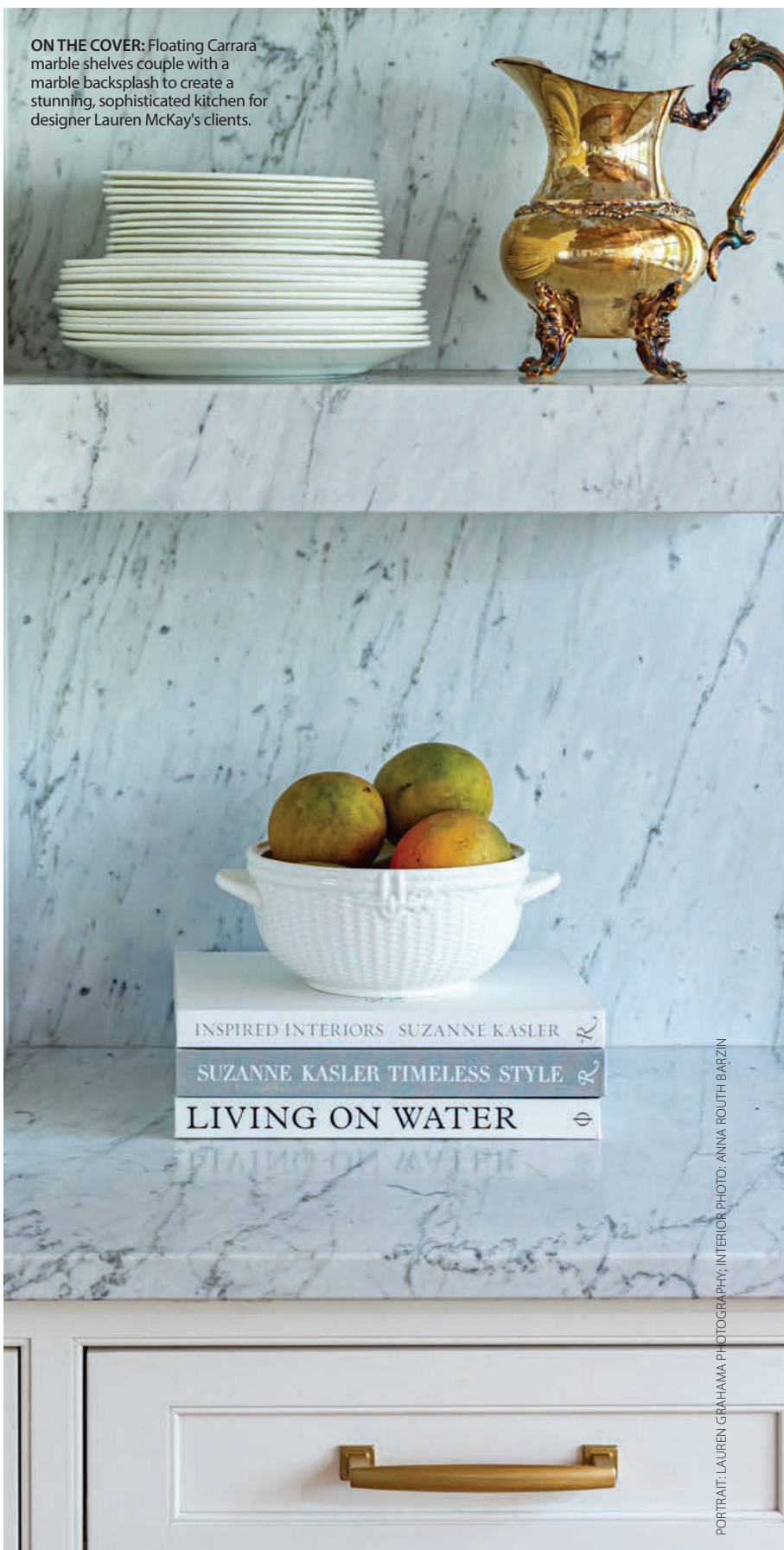
It's no wonder that we devote a whole issue to kitchens and bathrooms—two rooms that no family can do without. While kitchens bring us together, bathrooms can give us time away—a respite from a long day, a moment to steel ourselves for a tough conversation, or even the only time you may have to devote to self-care. This issue not only features our usual stunning homes with impeccable interiors, but it also showcases unique styles, the latest products, and inspiring ideas for the two most utilized spaces in your home.

From the heart of our homes to the heart of yours, we hope you enjoy this special issue of *Home Design & Decor*.

Blake & Anne Marie

Blake Miller and Anne Marie Ashley
Co-Editors-in-Chief

ON THE COVER: Floating Carrara marble shelves couple with a marble backsplash to create a stunning, sophisticated kitchen for designer Lauren McKay's clients.



PHOTOGRAPHY: ANNA ROUTH BARZIN



Riverbirch
REMODELING
DESIGN. BUDGET. BUILD.

Love Your CARPET

HOME

DESIGN & DECOR

homedesigndecormag.com

AUGUST / SEPTEMBER 2022

VOL 10 NO 4

CO-EDITORS-IN-CHIEF

ANNE MARIE ASHLEY
BLAKE MILLER

ASSOCIATE EDITOR

KARIN SIMONEAU

GRAPHIC DESIGNERS

SARAH MANN
LINDSAY RICHARDS

PUBLISHERS

MICHAEL MAYER
SUSAN V. MAYER

ASSOCIATE PUBLISHER

OONAGH MURRAY

WRITERS

SARAH CROSLAND
LEE RHODES
CHRISTINA SPRATT SPENCER
DANA W. TODD

PHOTOGRAPHY

ABIGAIL JACKSON
DUSTIN PECK
CATHERINE NGUYEN

SALES

SUE MOONEY
CHERYL NELSON

PRODUCTION COORDINATOR

SHELLEY KEMPER

PRODUCTION SUPPORT

STACY LONG
CATS UP GRAPHICS

CONTRIBUTORS

DAVID PAYNE
JON RUFTY
WILL STROPE
SUNNY SURANA
COURTNEY VAUGHN

PHONE

704-585-8025

The
PERSIAN
CARPET



5634 Durham Chapel Hill Blvd.,
Durham, NC

Beauty, Artistry & Tradition
FOR OVER 40 YEARS

Open Monday-Friday 10am to 6pm
Closed Saturday and Sunday

www.persiancarpet.com



facebook.com/TriangleHDD



[@homedesigndecor_triangle](https://www.instagram.com/homedesigndecor_triangle)

All contents copyright 2022, Maps Media, Inc. No part of this publication may be reproduced in whole or in part without the express written consent from publisher. Mention of any product or service does not constitute endorsement from Home Design & Decor® Magazine. The information contained in this publication is deemed reliable from third party sources, but not guaranteed. Maps Media, Inc. does not act as an agent for any of the advertisers in this publication. It is recommended that you choose a qualified remodeling, home furnishings or home improvement firm based on your own selection criteria.

Maps Media, Inc., d.b.a. Triangle Home Design & Decor® Magazine, will not knowingly accept advertising for real estate which is a violation of the Fair Housing Act. All real estate advertising in Maps Media, Inc., d.b.a. Triangle Home Design & Decor® Magazine, is subject to the Fair Housing Act which states "We are pledged to the letter and spirit of U.S. policy for the achievement of equal housing opportunity throughout the nation. We encourage and support an affirmative advertising and marketing program in which there are no barriers to obtaining housing because of race, color, religion, sex, handicap, familial status or national origin."

Maps Media, Inc., d.b.a. Triangle Home Design & Decor® Magazine, does not act as an agent for any of the realtors or builders in this publication. It is recommended that you choose a qualified realtor to assist you in your new home purchase.

EXPERIENCE WIDE-OPEN SPACES WITH LIMITLESS POSSIBILITIES



THE VISIONARY SERIES | BI-FOLD SYSTEM

MANUFACTURED AT OUR HEADQUARTERS IN RALEIGH, NC.
INSTALLED BY OUR EXPERT TEAMS.
INDUSTRY-BEST LEAD TIMES & PRICES.

GLASS DEPOTS
COMMERCIAL & RESIDENTIAL

GLASSDEPOTS.COM
5100 TRADEMARK DRIVE, RALEIGH NC 27610
919.255.9898

STEVEN SHELL

LIVING

BORN IN LONDON
ENJOYED AROUND
THE WORLD
EST. 1992



Raleigh, NC
2030 Clark Avenue
@stevenshellivingraleigh
919.803.1033

Mount Pleasant, SC
640 Coleman Blvd.
@stevenshelliving
843.216.3900

“So much more than just a great furniture store ”



DWELL

LATEST & GREATEST

ON THE HUNT FOR HIGH DESIGN, THESE COLLABORATIONS AND NEW COLLECTIONS FOR THE MOST UTILIZED ROOMS DESERVE A SPOT ON THE LIST.

PRODUCED BY ASHLEY HOTHAM COX
WRITTEN BY ANNE MARIE ASHLEY



FASHION FORWARD

Luxury fashion house Maison Marie Saint Pierre, known for its graphic and linear effects and opulent fabrics, has partnered with award-winning faucet manufacturer BARIL to create high-end hardware that epitomizes high design and quality functionality. The Marie collection takes the personalization of faucets to a whole new level. To celebrate the thirty-fifth anniversary of each company, they created this durable and art-forward collection featuring geodesic shapes found in nature. Each piece is unique, available in different formats and finishes, and created with flexible installation in mind. barildesign.com.



CONCRETE EVIDENCE

Sink manufacturer Kast Concrete Basins has launched Alto, its first-ever tapware collection. A global leader in concrete basins, Kast is taking bathroom design to a whole new territory with the line, which combines concrete color and texture with contemporary forms and finishes. Each set will be available in brushed brass, soft black, and soft-white metal finishes, with the option to choose any of its twenty-eight concrete colors for handle elements. kastconcretebasins.com.



ROLLING STONES

Designer Cara Woodhouse is known for creating design that results in unexpected artistry balanced by chic earth elements. Many of her projects have featured products from ABC Stone, so when the company approached her for collaboration on a new collection, the natural response was an eager agreement. The Classic Rock Collection features nine pieces in five marble colorways, exclusively made of the finest quality Italian cubic blocks of stone. Inspired by the movement and whimsy of rock music juxtaposed with the literal immovability of stone, the collection is full of curvaceous forms and intense natural stone design, something that has always drawn Woodhouse inward. abcworldwidestone.com.

CLOCKWISE FROM TOP RIGHT: COURTESY OF BARIL, COURTESY OF ABC STONE, COURTESY OF KAST

Putting cleaner water within reach. *That's* **ELKAY**®



©2022 Elkay Manufacturing Company

The ezH2O Liv™ Built-in Filtered Water Dispenser

Unrivaled filtration for lead- and chlorine-reduced water, instantly.



elkay.com/ezH2O-liv



SHOOT *the* MOON

Winner of the prestigious Merit Award for the Interior Design Best of Year Awards in Bath, the Luna faucet, designed by veteran bath design house GRAFF, has a singular design and mirror-like finish that makes it a truly unique foray into innovative futuristic design. Utilizing old-world craftsmanship and new-age technology, Luna is inspired by the shape of a crescent moon and aims to inspire a sense of calm in the privacy of your space. It comes in several finishes, including polished chrome, vintage brushed brass, and matte black. wilkinsonsupplyco.com.

LOVE & TILE

Husband-and-wife duo Kat Hutter and Roger Lee are known for creating brightly hued ceramics with interesting and often geometric designs infused into the surfaces. Roger's hand-thrown, high-fired stoneware is embellished with Kat's playful patterns, and the result is highly functional art—which is why a collaboration with chic tile manufacturers Pratt + Larson made the ultimate sense. The Kat + Roger Collection views like a desert dream, with a down-to-earth ten-color palette and three sizes of field tile. Integrate a bespoke arc element to create a personalized pattern, go for high-contrast combos to pay homage to Hutter and Lee, or create a more delicate look with field tile. traditionsbriarcreek.com.



SHIP *SHAPE*

Known for producing distinctive kitchen faucets, faucet suites, and accessories, American manufacturer Waterstone Faucets has launched a new collection, its first foray into bath accessories. The Argonaut Collection calls back to Waterstone's naval roots with one-of-a-kind pieces that honor steampunk styles and maritime design while imparting a truly sophisticated atmosphere that can sometimes escape the nautical aesthetic. rjacobsfph.com.



CLOCKWISE FROM TOP LEFT: COURTESY OF WATERSTONE FAUCETS, COURTESY OF PRATT + LARSON



DESIGN ■ LINES
signature

Bringing creative design to life

RALEIGH, NC • 919.852.0570 • DESIGNLINESIGNATURE.COM

PHOTOGRAPHY BY Abigail Jackson



GENERATION NEXT

The next generation of kitchen ovens has arrived with Monogram's 30-inch Smart Flush Hearth Oven. Building on the genius of the first ventless all-electric home oven created by Monogram, the oven features an integrated ventilation system with active smoke filtering and offers the same electric ease of use as its predecessor. With a bottom element that can reach up to 1,300 degrees and a top that can get to 800 degrees, the masterful design allows for flawless cooking and a sleek and futuristic look in your kitchen. ferguson.com.

SHORT ORDER

French culinary and design enthusiasts alike have long praised the extraordinary beauty and functionality of La Cornue ranges. Timeless style and refined taste have been the benchmark of each new offering, and falling in line effortlessly is the CornuFé Series range. For those who want the unmatched functionality and look of La Cornue but in a smaller size, the CornuFé is perfect. With a choice of twelve colorful finishes, three trims, and powerful gas burner or ceramic glass induction range-top options, the CornuFé delights in personalization as much as it does in performance. kandbgalleries.com.



SPHERES *of* INFLUENCE

America's premier designer and manufacturer of mosaics, New Ravenna, has introduced the Biome collection. The new line features fifteen mosaic designs, handcrafted from stone and Glazed Basalto™ with accents of shell and iridescent and metallic glazes. New Ravenna deconstructed the five biomes known to earth in order to explore the variety of life and terrain found in these disparate climates. "When palette and pattern overlap, we can completely change the perception of a design; a pattern that was based on a fossil from the desert now reads as a meadow flower in white and green or a falling snowflake in white and gray," says New Ravenna's creative director Cean Irminger. A beautiful way to describe the truly versatile nature of this creation. newravenna.com.



FROTHING *at the* MOUTH

From refrigerators and ranges to toasters and espresso machines, the Café line from GE has impressed from day one, and the Café Affetto Automatic Espresso Machine is no exception. Coffee lovers can rejoice over the Café Affetto's ability to automatically grind and brew barista-level espresso drinks in just ninety seconds. The SmartHQ app can be synced with the machine so you can enjoy your favorite beverages at the exact temperature and strength you prefer every time. And if you're looking for a creamier consistency, the froth feature heats milk to create everything from frothy foam for cappuccinos to dense microfoam for lattes. williams-sonoma.com.

CLOCKWISE FROM TOP LEFT: COURTESY OF MONOGRAM, COURTESY OF NEW RAVENNA, COURTESY OF CAFÉ, COURTESY OF LA CORNUE



B O S T



H O M E S



SIGNATURE LUXURY IS ACHIEVED WITH CAREFUL PROCUREMENT,
AN ART THAT HAS EARNED US RECOGNIZABLE DISTINCTION.
WE BELIEVE YOUR DESIRED HOME IS DEEPLY PERSONAL
AND YOUR EXPERIENCE IN ACHIEVING IT SHOULD BE TOO.

BOSTHOMES.COM | (919)-460-1983 | @BOSTHOMES

Padula chose the copper Fournier range hood purchased from Francois & Co. to be the centerpiece of her French country-inspired kitchen. Copper pans collected over the years double as a design element, and sconces from Visual Comfort offer task lighting. Pendants over the bar are antiques found from a dealer in High Point, and the custom Lacanche range is highly functional yet beautiful.



A French REVOLUTION

ONE MONTADALE NEIGHBORHOOD HOMEOWNER WAS DREAMING IN FRENCH WHEN SHE CREATED THE UNIQUE ELEMENTAL DESIGN OF THIS INSPIRED KITCHEN.

WRITTEN BY ANNE MARIE ASHLEY

After living in northwest Cary for fifteen years, Libby and Bob Padula agreed it was time to build their dream home. With two kids grown and one teenager on his way out, they dreamed up a custom home and set about making it a reality.

Over the years, Libby Padula had been gathering ideas and plans for what she wanted in a custom home, but putting into effect what she envisioned was a task. "I'm only a designer at heart," says Padula. "I bought my first antique when I was twenty-one—an old pine box that said Libby's Fine Foods on it. But since then, my passion for antiques has grown, and particularly French antiques have caught my eye."

A lover of cooking and entertaining, Padula spent a good deal of time designing her ideal kitchen, complete with a French-country feel and plenty of space for lounging and entertaining, as well as antique and interest-bearing elements.

"I knew I wanted a nice bright kitchen with lots of white, but I also wanted the warmth that the French-country aesthetic imparts," she explains.

A perfect jumping-off point was the statement-making antique brass Fournier range hood she purchased from François & Co. Hanging above the island are antique pendant lights that Padula found from a dealer in High Point, and a pair of Visual Comfort sconces tie everything together from there.

In keeping with the French aesthetic, Padula customized a Lacanche range, which was made in France, and used it as the focal point in the kitchen. "I spent fifteen years cooking on a horrible stovetop, and I knew when we built this home that it was time to get the range I've always wanted," she says.

For the backsplash, Padula wanted interest but didn't want to upstage the range and hood, so she chose brick finished



Kitchen & bath galleries

APPLIANCES

COMPLETE KITCHEN & BATH DESIGN

CABINETS

KANDBGALLERIES.COM

CARY
108 E. CHATHAM STREET
919.467.6341

CHAPEL HILL
1201-J RALEIGH ROAD
919.929.1590

RALEIGH
8411 GLENWOOD AVENUE
919.783.7100

RALEIGH
4209 LASSITER MILL ROAD, STE. 130
919.600.6200



"I USE EVERY SINGLE INCH OF IT, FROM THE ANTIQUE COPPER POTS ON THE WALL THAT I'VE COLLECTED OVER THE YEARS TO THE HIGH-PERFORMING RANGE. IT'S HIGHLY, HIGHLY FUNCTIONAL."

—LIBBY PADULA

with messy grout and painted white. Just above the range, she included a herringbone pattern. "The team installing it thought I was crazy when I asked them to keep the grout job messy," she laughs, "but I knew exactly what I was envisioning, and the texture it adds is just what I was going for." Paired with authentic Carrara marble countertops, complete with etching, from ROCKin'teriors, the overall look is thoughtful, warm, and decidedly French. "I know marble is finicky, but I just love it so much, and it's the patina I wanted. I worked with Rebecca Rotella at Kitchen & Bath Galleries, and she helped me so much with the functionality of my kitchen," Padula says. "I use every single inch of it, from the antique copper pots on the wall that I've collected over the years to the high-performing range. It's highly, highly functional."

Instead of a formal dining table, Padula opted for a sitting area to keep things inviting and warm. An interesting collection of midcentury-modern pieces, antiques, and thoughtful layering creates the perfect keeping room.

LEFT: Carrara marble countertops will patina over time, resulting in the Old World feel and charming aesthetic Padula wanted. Ample storage on the pantry wall hides appliances when not in use.

RIGHT: Padula recreated the charm of French-country kitchens by requesting a messy finish of her simple brick backsplash, which was then painted over white. Function meets design with a magnetic knife holder alongside an over-the-range faucet.

BOTTOM: The sitting room is layered with antique, vintage, and midcentury-modern finds. An eclectic mix keeps things "cozy and inviting," Padula says.

Overall, the project was the ultimate love story of design and passions colliding, resulting in a truly personal, infinitely comforting, and enviously practical design—the unicorn of kitchen living. "Honestly, I love living in this kitchen day to day," says Padula. "It perfectly accommodates my older children when they come home to visit, and it will transition well as me and my husband age." ♦



SHADOW CREEK
ESTATES



A LOYD BUILDERS DEVELOPMENT
A True Custom Home Experience from 2.5mm+

REIMAGINED STYLE

THREE LOCAL DESIGNERS, THREE DISTINCTIVE BATHROOM DESIGNS, AND PLENTY OF HELPFUL TIPS ON BRINGING A LITTLE BIT OF MAGIC TO THE MOST PRACTICAL ROOM.

WRITTEN BY BLAKE MILLER
PRODUCED BY ANNE MARIE ASHLEY



CLASSICAL MAKEOVER

Heather Garrett has faced multiple challenges during her career as a designer. A bathroom addition to her clients' circa-1920s home in Durham's Forest Hills neighborhood was no exception. The bathroom was added over an existing screened porch and, as such, needed considerable engineering to support it. But once completed—a feat in and of itself—Garrett was able to transform the space into a sanctuary for her clients. "We used living room furniture and decoration whenever possible in order to soften the utility of a bathroom with all the hard surfaces," she explains. "Furniture, artwork, living plants, antique wool rugs, and soft lighting fixtures all help make a 'living bath.'" Angling the freestanding tub in a corner along with a show-stopping chandelier "creates a place where you really feel you can tuck into luxury."



Meet the Designer **HEATHER GARRETT**

BEST BATHROOM SPLURGE

"Great, unusual lighting you'd normally find in a living space. That's a big visual change-agent."

BEST BATHROOM DECORATING TIP

"See above. That's truly the key. As much as possible, try to help your bathroom feel like an extension of your bedroom with all its softness and materials."

BEST BATHROOM INSPIRATION

"Instagram is a treasure trove of inspiration. Explore hashtags to look for certain elements you may be curious about, then start an album dedicated to your saved finds."

BATHROOM MUST-DO

"Install vanity sconce lighting at eye level, on either side of your sink, to illuminate your face naturally. Designing all of your lighting as overhead fixtures can create shadows and a lack of warmth."

BATHROOM DON'T

"Hang small vanity mirrors. This is the place to go big, and, ideally, choose something framed that would otherwise be found in a living space. The reflections from a larger mirror will help send more light bouncing around the room, and a taller mirror will increase the perceived height of the ceiling."

EXPLORE *the* MUSIC LIBRARY

The STEINWAY & SONS **SPIRIO** reveals the subtlety and passion of an artist's original performance. Soft trills, delicate pedaling, and thundering fortissimos present no difficulty for **SPIRIO** — and are reproduced with unparalleled accuracy. The result is a precise revelation of the pianist's entire range of motion and emotion.



STEINWAY & SONS

HOPPER
PIANO + ORGAN CO.

A PROUD HISTORY OF OFFERING INCOMPARABLE INSTRUMENTS

1800-A TILLERY PLACE, RALEIGH, NC 27604 • 919.755.0185 • HOPPERPIANO.COM



FARMHOUSE *MODERN*

Rebecca Driggs' clients knew their primary bathroom needed updating, they just didn't know where to start. Enter Driggs, who had worked with the homeowners previously. The bathroom featured blonde wood cabinets, a stale earth-tone color palette, granite counters, and outdated tile. To brighten and modernize the space, Driggs added white shiplap to the walls and complemented with black-and-gold lighting, hardware, and plumbing to elevate the overall design. "The custom walnut cabinetry and extra-thick quartz countertops from Ruth Ann at Taylored Spaces in Raleigh really bring this space to life," says Driggs, adding that there are separate vanities and a separate storage cabinet for the homeowners' larger toiletry items and linens.



Meet the Designer **REBECCA DRIGGS**

BEST BATHROOM SPLURGE

"Definitely the custom cabinetry. In this home, each person has their own vanity and a separate storage cabinet for their larger toiletry items and linens. The vanity drawers include outlets for hair dryers, curling irons, and flat irons, and the mirrored doors on the large cabinet are a showstopper."

BEST BATHROOM DECORATING TIP

"Start by paying attention to your morning or evening routine and how you use your bathroom. Determine what would make your routine easier and more enjoyable. Do you need more drawers for smaller items? Do you need larger storage for toiletries and linens? Do you just need a refresh? Take the time to determine what you really need before you dive into a renovation."

BEST BATHROOM INSPIRATION

"We find a ton of inspiration on Instagram and Pinterest. If you are working with a designer, provide them with a few inspiration pictures to guide the design."

BATHROOM MUST-DO

"A few years ago, my favorite tile installer recommended heated shower floors to me, and my client's love theirs. The heat feels amazing on your feet, and it keeps the shower floor from getting moldy."

BATHROOM DON'T

"Renovations can be expensive, but don't skimp on features you really want that are hard to install later [like heated floors]."



COLEY HOME





CONSCIOUS *COLOR*

For designer Lisa Mende, the powder room presents an opportunity to push boundaries with design. She created a jaw-dropping space in the powder room of her clients' Raleigh home. The bold custom-designed wallpaper by Charlotte-based Jill Seale set the tone for the tiny "jewel box of a room." To up the wow factor, Mende installed a custom-designed vintage Murano glass chandelier by Louise Gaskill and added a Bunny Williams mirror for a touch of glam. The real draw here, though, is the large-scale artwork by Charlotte-based artist Windy O'Connor. "I purposely chose a large-scale piece to give the room a focal point when walking from the master bedroom down the hall," she explains. "This room is small and doesn't have a window, so the art serves as a place for the eye to engage." To really finish off the design, Mende painted the moldings and door in Sherwin-Williams Tricorn Black to make everything pop.



Meet the Designer **LISA MENDE**

BEST BATHROOM SPLURGE

"That's a hard question because all the elements work together to create a space, but of all the elements, I think lighting is the most important. When you are designing a powder room, the lighting must be gorgeous, not just functional, so that's where custom pieces like the Louise Gaskill pendant come into play."

BEST BATHROOM DECORATING TIP

"Always have a dimmer on your lights so you can soften them for company. And fresh flowers. A small bud vase with one stem of flowers adds so much life to a room. Who doesn't love fresh flowers?"

BEST BATHROOM INSPIRATION

"I draw most of my inspiration from my travels. If you scroll through my photos on my phone, you will see photos of bathrooms from famous hotels and resorts. I recently designed a bathroom using a tub I saw at Blackberry Farm when I was there on vacation."

BATHROOM MUST-DO

"I highly recommend a place to hide essentials that one might need but may not want to bother the host for, such as a Band-Aid, hair pin, mouth wash, toothpaste, etc."

BATHROOM DON'T

"Don't ever use a pocket door for a bathroom. They do not block out enough noise or offer the proper privacy necessary for a bathroom."



BEV'S FINE ART

THE CENTERPIECE



Oil on Dibond, 36" x 36"

Reflecting Blue, David Dunlap

GALLERY | ART CONSULTING | CUSTOM FRAMING

7400 Six Forks Road, Suite 19 | Raleigh, NC 27615
www.bevsfineart.com | 919.870.5342 | contact@bevsfineart.com

PURSUIT of PINK

A SHADE SO
DISCERNINGLY DAINTY
AND DELIGHTFULLY
QUAINT, DUSTY ROSE
DOES NOT DISAPPOINT.

PRODUCED BY ASHLEY HOTHAM COX
WRITTEN BY CHRISTINA SPRATT SPENCER

Like the dreamy, dim flash of blush before dusk gives way to dark, this romantic, rose-tinted hue holds the delicate depths of dove and lavender in its guise as does the fading exhale of a nostalgically idyllic day. A lithely lyric of lovely, this delightfully melodic note ever so gently casts a gracefully ambient glow, enveloping a veil of balmy and balletic refinement. Politely polished with mint, sage, and juniper, picturesque with parchment and abalone, and perfectly poised with the richness of mulberry and cadet tones, this petal-like pop of pretty is a classic cotillion waltz of color, supple and shadowy in its softness.

1. Vivian Howard & Haand Small Driftwood Vase in Buttermilk Pink / \$55 / haand.us
2. Blush Daisy Suzani Pillow / \$165-\$240 / stfrank.com
3. Veneto Small Table Lamp by Kelly Wearstler for Generation Lighting / \$280 / circa Lighting.com
4. Jodhpur in Coral Grasscloth by Alex Conroy Textiles / to the trade / thedesigntsocialstudio.com
5. Laney Slipper Chair in Rattan, Rose Quartz / \$960 / coleyhome.com
6. Comet Day Wool Rug / starting at \$2,880 / therugcompany.com
7. Shy Boys Interior Paint / starting at \$45 / backdrophome.com

Atlanta-based interior designer Suzanne Kasler employs a monochromatic range of pinks in her client's study, which is on display in Kasler's newest book, *Edited Style*, debuting September 20.



LUXURY IS OUR SPECIALTY



CUSTOM POOLS | POOL HOUSES & CABANAS | STONework | FIREPLACES | WATER FEATURES | LANDSCAPING | OUTDOOR KITCHENS | LIGHTING | IRRIGATION

Bringing
DREAMS
— to —
REALITY
FOR OVER 30 YEARS


Old North State
LANDSCAPE DEVELOPMENT, INC.

Turn- Key Projects
Landscape Design
Landscape Construction
General Contracting

onslandscape.com
(919) 384 - 1800



CAROLE *Hollowell*

After more than twenty years in the interior design industry, Carole Hollowell has a well-honed eye for her craft and has cemented her place as an expert on tailored design and stylish furnishings. Her comprehensive design process carries clients smoothly from concept to execution, from whole homes to rooms like this client's daughter's room.

"Our client's college-aged daughter is passionate about theater and dance," Hollowell explains. "We knew that designing her bedroom with a little bit of theatrics was a must. It is dramatic yet soft and feminine. The ballet pink was a nod to her love of dance, and the mix of old and new, as well as classic and clean, was our vision. We wanted this room to be timeless and beautiful for her for many years. The room doubles beautifully as a guest bedroom while she is away at college."



1. Amelie Alia Table Lamp / \$691 / perigold.com
2. Art Inspired by Tommy Mitchell Large Flower Studies / \$1,500 / tommymitchellcompany.com
3. Swain Bench / \$308 / aidangrayliving.com
4. Customizable Crown Bed / starting at \$1,525 / coleyhome.com
5. Caanan 1-Drawer Side Table / to the trade / bungalow5.com
6. Custom King Pillow / starting at \$150 / coleyhome.com
7. Wall Mural / \$298 / anthropologie.com



Closets
by Design

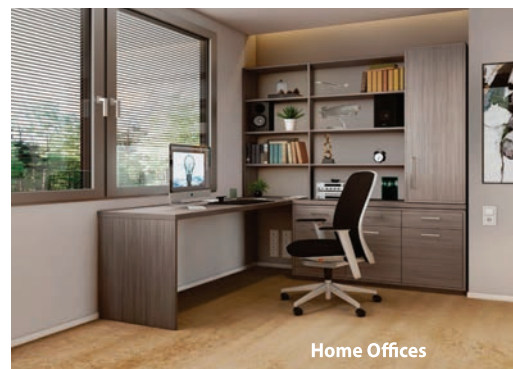
IMAGINE YOUR HOME,
TOTALLY ORGANIZED



Pantries



Silver II Garage Cabinets



Home Offices

CUSTOM CLOSETS | GARAGE CABINETS | HOME OFFICES | PANTRIES | LAUNDRY | HOBBY ROOMS

18 MONTH FINANCING

WITH APPROVED CREDIT. CALL OR ASK YOUR DESIGNER FOR DETAILS. FOR A LIMITED TIME.

40% PLUS FREE INSTALLATION*

CALL FOR A FREE IN-HOME DESIGN CONSULTATION AND ESTIMATE



CLOSETSBYDESIGN.COM

919-670-2990

UH

*40% off any order of \$1500 or more, or 30% off any order of \$750 or more. Not valid with any other offer. Free installation with any complete unit order of \$600 or more. With incoming order, at time of purchase only.



DESIGN FOR THE TRADE

CHARLOTTE
2122 Freedom Drive, Suite A
Charlotte, NC 28208
704.358.0277

RALEIGH
1405 Capital Blvd
Raleigh, NC 27603
919.832.5555

ahokelimited.com



PHOTOGRAPHY BY DUSTIN PECK

INTERIORS

A scullery is always an interesting addition, according to McKay, and she enjoyed designing this one with open shelves that provide plenty of opportunity for styling. Shail Construction installed cabinets by Cabico, and the tile is from Traditions in Tile and Stone. **OPPOSITE:** Carrara marble floating shelves couple with a marble backsplash to create a stunning, sophisticated kitchen detail.



FOREVER



HOME

DESIGNER LAUREN MCKAY JOINS HER CLIENT'S NEW CUSTOM HOME PROJECT TO BRING IT FROM A CONCEPT TO THE TANGIBLE.

TEXT BY ANNE MARIE ASHLEY | PHOTOGRAPHY BY ANNA ROUTH BARZIN

INTERIOR DESIGNER

Lauren McKay was comfortable with the Russo family's style—not only had she helped them furnish their previous home, but over the past nine years she also designed Justin Russo's dental office. When they asked McKay to design their new custom home, she was eager to help and confident they could nail the project perfectly.

"I worked with Justin and Lesley on their previous home while I was a designer at Design Lines," recalls McKay. "Justin is such a hard worker and as he was working to grow his dental business, I could tell that home wouldn't be their forever home, but they wanted to make it nice while they gathered ideas for the home they ultimately wanted to build someday."

The Russos had friends who lived in the Bella Vista neighborhood in north Raleigh, and they loved the oversized lots and open spaces the area afforded, along with the proximity to town and the ease of access to the airport. They partnered with Shail Construction to build their custom home, architected by Tony Frazier, and asked McKay to help them design it from the ground up.

"When it came time to choose an interior designer for our new home build, Lauren was the natural choice," says Lesley Russo. "We were very happy



Because the Russos spend so much time in the kitchen, it had to be a well-functioning, beautiful hub. Carrara marble countertops complement the butcher-block island and all-white cabinetry, all set beneath a coffered ceiling made of natural wood completed by Shail Construction.





ABOVE: The jewel box of a powder room features Romo wallpaper and a custom vanity by Old Biscayne Designs, designed by McKay. The sconces are by Visual Comfort. A mirror by Bungalow 5 keeps things interesting.

RIGHT: In the pool house bathroom, McKay chose an apropos wallcovering with a mermaid pattern by Hygge & West in cool blues, and paired it with crisp black marble and white tile from Traditions in Tile and Stone.



with the design selection and process of our previous home and my husband's dental office. Lauren has a great ability to listen to our ideas and overall vision and bring it to life while also infusing her own creative ideas, style, and design expertise."

From the outset, McKay knew the Russos were looking at inspiration from homes in Utah that featured grand facades and unique, interesting details. They had also recently returned from a memorable family trip to Paris, and the time-tested architectural details and grand structures were things they wanted to bring into their own custom home. "Funny enough, I had just been to Paris the year before them, as well," says McKay, "and no wall in that city is untouched—details are everything, and seeing a historical place like that really does influence what you want to see in your own home. It makes you want to use every surface to express your style, and that's what I tried to bring into the Russos' new custom home."

With that in mind, McKay's design featured plenty of white space, lighter wood tones, and mostly neutral hues. "Compared to their last home, this home is more classic," says McKay. "Still, there are some bold spaces; they aren't afraid of color. In fact, the dining room features a deep teal mural wallpaper by Schumacher that inspired the space."

In the living room, French-inspired details like white walls, wall paneling, tall windows, ornate knobs on the built-ins, and art by Natural Curiosities above the baby grand piano make the room feel elegant yet casual. A custom sectional sofa by Hallman Furniture anchors the room, and two Hickory Chair swivels offer extra seating.







Mural wallpaper panels by Schumacher drove the design in the dining room, pulling in deep blues amidst an otherwise neutral home palette. The wine niche features a Romo wood veneer chevron wallpaper. The dining table has a Bradley base with a custom gray Ceasarstone quartz top fabricated by ROCKin'teriors.





ABOVE: In the grand owner's suite, grasscloth wallpaper by Wallquest softens the space while a custom marble fireplace, fabricated by Ivy Lane, takes center stage. McKay provided the custom canopy bed with a tufted headboard, and reeded bedside tables add a Parisian touch. A brass chandelier from Visual Comfort hangs above.

LEFT: Marble adorns the Russos' bathroom, with a basketweave tile pattern on the floor that was custom cut on-site, all from Traditions in Tile and Stone. A gold-leaf étagère from Worlds Away holds necessities and niceties while custom white cabinetry keeps the space feeling clean and bright.

"Both my husband and I knew we wanted something timeless and traditional, and we took to Pinterest and the internet to help us find inspiration," says Russo. "Lauren helped us pore through our growing inspiration boards and was able to pinpoint the look we were going for; I think she once described our vision as classic French chateau-inspired with lots of European influence. Spot-on."

The kitchen was a central part of the project, and McKay worked hard to make it functional and beautiful, incorporating many of the Parisian influences the design plan called for, such as natural materials, caning on the chairs, and bistro pendant lights. "The scullery was particularly fun and different

to work on," recalls the designer. "The contained nature kept the design interesting, and the open shelves offered great opportunities for styling. We also made a portion of the cabinetry look like a China cabinet and lined the inside of the cabinet with Gracie wallpaper for a wow factor."

"We have three kids, and we spend so much time in the open spaces in our home. They function perfectly for us," says Russo. "We have a laundry room that doubles as a homework room right off the kitchen, designed intentionally to be there so that the kids would have their own space that was close to where we spend the most time. Our kitchen leads right into the open living room, where the kids are often



ABOVE: The butler's pantry provided another opportunity for color, with cabinets painted in Cabico's Blue Fir, ordered through Shail Construction. A gold chandelier from Visual Comfort creates high contrast interest, and tiles from Traditions in Tile complement the bold tones. Classic brass hardware with custom monograms, purchased from Byrd Decorative Hardware, add a personal touch on the center doors.

RIGHT: "My favorite part of the home is perhaps the foyer," describes McKay. "When you walk in, it's just so stunning. The details are unexpected, from the tile pattern to the shaped pickets on the stairs to the runner, which has a sheen to it, to the millwork on the walls." An entry table from Hickory Chair welcomes guests. An acrylic and brass chandelier from Visual Comfort hangs overhead.



playing, watching TV, practicing their piano, or just hanging out. The kitchen also looks out to the pool, where we now spend a lot of time. So the kitchen is the most important room in our home, designed to connect us to all the spaces we spend the most time as a family."

With marble, organic woods, and white permeating their idea boards, McKay got the message loud and clear and draped most of the surfaces in these materials. She also incorporated a French blue color, which also kept popping up in their favorite designs. The dining room called for wallpaper, and when they were looking through options, McKay and Russo kept coming back to the bold Schumacher mural, and they knew it was the one. "Even with the deep blues, it felt like it still related to the other spaces while having its own personality," says McKay.

Ultimately, McKay created a home for the Russos that speaks to what they've worked so hard to create: a custom family home that ties in everything that's most dear to them. "So many hours went into fleshing out our vision, and many more went into designing it, so when we began to see the house finally taking shape, it was pretty surreal to see it all come to life," recalls Russo. "Even now, living here the past five months since moving in, my husband and I still find it pretty exciting to enjoy this house on a daily basis." ♦

A Hickory White breakfast table centers the breakfast room, and floor-to-ceiling draperies flank windows that overlook the pool. A Julie Neill for Visual Comfort chandelier hangs overhead.



The large size of the living room space presented some challenges for the designers, who ultimately created vignettes and distinct seating areas.



ALL THINGS
BRIGHT AND

BEAUTIFUL

A BROOKLYN-BASED FAMILY CREATES THEIR COLOR-DRENCHED
SOUTHERN DREAM HOME IN RALEIGH.

TEXT BY SARAH CROSLAND

PHOTOGRAPHY BY DUSTIN PECK AND CATHERINE NGUYEN





WHEN A COUPLE FIRST considered purchasing a house in 2017, they were looking for a home near New York City, where they were living at the time. But she was from the Raleigh area, and on a trip home she came across a listing for a circa-1939 residence that had been completely updated.

“Really, the reason we moved was for this house,” says the mother of a nine-year-old and two-year-old. “We’d been looking in Connecticut, but when I saw this house, I knew it was exactly what I wanted—an old home with a big lot. I called my husband and told him we’d found our house.”

The two-story home, which sits on close to one acre, features the traditional exterior that she loved and enough space for the pool that her husband wanted. As soon as they purchased it, the couple began to add their own touches, including a stunning backyard pool and guest house designed for both entertaining and family time.

They also quickly connected with Zandy Gammons and Liles Dunnigan of Raleigh’s Miretta Interiors. “It seemed like a great match because she loves color and had a very Southern style, even though they were living in Brooklyn at the time,” says Gammons. “She really wanted to add some bright colors, but in a sophisticated way.”



A headboard covered in an elegant Jane Churchill fabric and simple linens by Legacy mix to create a soothing respite in the primary bedroom. **OPPOSITE:** Gammons incorporated the homeowner's art and sentimental pieces into the fresh design, like this green juju hat and the blue-and-white porcelain.





While the home was traditional and the owners wanted to maintain its historic integrity, they also wanted to incorporate elements that were more contemporary and dynamic. A favorite element of both Gammons and the homeowners is the powder room's Spoonflower wallpaper, which was designed by one of the Beastie Boys for Flavor Paper. At first glance, it appears to be a traditional blue toile. However, the paper features iconic Brooklyn scenes including Coney Island, Nathan's hot dogs, and even Notorious B.I.G.

This same kind of playful vibe can be found in pieces throughout the home. "She had purchased a few pieces of art, including a green juju hat," says Gammons, referring to the circular feathered wall hangings that were originally a Cameroonian tribal symbol of prosperity. "We had a custom acrylic frame made for it to turn it into a more sculptural piece. You see it right when you walk in and it's such a statement."

The dining room's light fixture was another statement piece the homeowners found irresistible. The clustered bubble

In the primary bedroom, Gammons created a mix of traditional and modern with spool chairs by Phillips Scott covered in an abstract cactus-print fabric by Camengo, creating a statement and adding a pop of pink. **OPPOSITE:** For her daughter's nursery, the homeowner wanted a room that was restful and serene. With that in mind, Gammons chose a Thibaut lavender wallpaper and used simple linen window treatments by Kravet to pull out the color.





ABOVE: The home's entry, which features a colorful runner from Stanton Carpet and a statement chandelier from Visual Comfort Lighting, sets the scene for a space with charming details.

OPPOSITE: The homeowners have young children and love to entertain, so they spend a lot of time in the kitchen, where blue tile and white cabinetry create a cheerful and bright space.

chandelier by Oly hangs from a painted blue ceiling and brings a modern touch to the colorful room. "My dining room is my favorite room in the house," says the homeowner. "We do a lot of entertaining in there, or if we sit down for dinner as a family, it's in there. It's a fun, happy room."

The team's expert use of bright colors throughout the home gives it that same fun and happy feeling. But the color never feels overwhelming and the rooms still flow well together. "We worked to have really cool pops of color," says Gammons. "But there is always a place to have your eyes rest in the home. We have restful moments like the navy-blue sofa or the white linen treatments in the living room."

Ultimately, the designers were tasked with turning a house that had already been updated into a space with details







ABOVE: The homeowner fell in love with this yellow wallpaper by Quadrille for the family's mudroom. "It creates such a bright spot when you enter the home," says Gammons.

RIGHT: At first glance, the powder room's wallpaper, designed by Mike Diamond of the Beastie Boys and produced by Flavor Paper, looks like traditional toile, but it actually features scenes from modern-day Brooklyn, even including an image of Notorious B.I.G.



and finishes that would make it feel like a home specially created for its new family. Built-ins in the living room serve to showcase their style—and, when needed, hide their children's toys. And many of the blue-and-white porcelain pieces in that room were pieces from the homeowner's grandmother.

"We wanted it to be a reflection of their style," says Gammons, who notes that it can sometimes be difficult when a home has been redone by a previous owner. "It was so pretty, but there was a disconnect. Adding all the special touches and details pulled it together, and they've turned it into their perfect home." ♦

This Oly bubble light is a favorite of both the designer and the homeowner, elevating a traditional dining room into a playful, modern space.





The image shows a well-lit living room with a coastal aesthetic. On the left, a built-in window seat with a grey tufted cushion and several colorful patterned pillows sits under a white arched alcove with a wooden ceiling. A brass sconce is mounted on the wall. To the right, a white sofa is adorned with a grey and a bright blue pillow. In front of it is a light-colored wooden coffee table with a spherical woven object on top. A side table made of a woven basket holds a small blue vase with yellow flowers. In the background, a white console table holds a lamp with a driftwood base and other decorative items. A window with a white frame looks out onto greenery. The overall color palette is white, light wood, and pops of blue and orange.

MAKEOVER MAGIC

TEXT BY **BLAKE MILLER** | PHOTOGRAPHY BY **DUSTIN PECK**

NEARLY DESTROYED BY HURRICANE FLORENCE, ONE COUPLE'S BEAUFORT, NORTH CAROLINA, BEACH HOME IS GIVEN NEW LIFE BY DESIGNER LIZ GOLDBERG.



Goldberg's clients were about to become grandparents, so she outfitted the den with durable, easy to clean upholstery that could stand up to wet bathing suits and sandy baby feet and bottoms. Goldberg added washable Romo slipcovers in a sturdy white to the loveseat and chairs. She also incorporated a pop of color via throw pillows in fabrics by Brunswick & Fils, Designers Guild, and St. Frank.

LIZ GOLDBERG

was just two weeks into a kitchen and bath remodel in Beaufort when havoc struck. In September 2018, the coast was ravaged by Hurricane Florence, leaving wreckage in its wake. The home was entirely flooded and the project was instantly put on hold. "We'd just started with things," says the designer. But, like any good story, there was a silver lining to the destruction. "My clients were able to completely reimagine their beach home and create something that they really loved in its place," she says.

The three-bedroom home had a typical 1980s floor plan: compartmentalized and closed off, with dark rooms, including a tiny galley kitchen, dining room, and den, and little to no water views despite its stunning sound-front location. "They had this amazing view of the sound, but you couldn't see any of it with the way the home was originally designed," explains Goldberg. "The house was extremely dated; the spaces were built blocking the view of the sound, making the rooms feel small, dark, and lifeless."



The light fixture by Arteriors reminded Goldberg of bubbles, so she added it to the foyer to set the tone for the home's overall coastal-chic design. A Stark runner in a neutral shade allows pops of color from a nearby bench, swathed in a Carley Kahn fabric with Samuel & Sons piping, to shine.



So what began as a straightforward kitchen and bath remodel soon transformed into a whole-home renovation that included tearing down water-logged drywall throughout. It also meant removing interior walls and opening up all the main living spaces so the rooms were seamless and connected and afforded spectacular sound views. “We brought the home down to the studs, removing walls and reworking the floor plan, making the overall flow and function of the space more cohesive to our client’s lifestyle,” explains Goldberg. “Being empty nesters, our clients realized this would be an ideal time to bring their dream of living full-time at the beach to a reality.”

“You can now see the view of the backyard as soon as you open the front door,” says Goldberg. “You enter the home and can immediately see their dock, which overlooks marshy land and small islands that look like a painting. It’s the perfect, quiet place to connect to nature.”

That view inspired the entire home’s interior design, as Goldberg drew color cues from nature’s landscape just outside the window. “We believe the Southern



The kitchen had one of the biggest transformations. Once a small galley-style room, it became an open, bright, inviting, and ultimately more functional work and entertaining space. Goldberg paired the quartz countertops with custom-painted cabinets featuring hardware by Ashley Norton. The light fixtures are by Visual Comfort.



LEFT: The once tiny laundry room was opened up during the renovation to create a more functional space. Because of its location off the kitchen, Goldberg wanted to make it stylish as well, so she added wallpaper by Lindsay Cowles coupled with custom white cabinetry featuring dogwood flower hardware by Modern Matter as a nod to the homeowners' Southern roots.

BOTTOM: Goldberg painted the custom rattan mirror a "really happy yellow because it reminded me of the sun at the beach," she says. The homeowner came to Goldberg with a colorful scarf in a complementary hue that was then framed as a piece of art in the guest bath.

charm and coastal lifestyle of this project is what makes it a dream project," she says. "There is an instant ability to relax and feel right at home in this space." Goldberg's ultimate design goal was to enhance the coastal cottage home without incorporating the typical navy-and-white combination or overused nautical elements. Exposed wood coupled with dusty blues and greens with pops of saturated color throughout elevated the home into the relaxing retreat of which the homeowners had dreamed.

While the home was damaged beyond repair, many of the furnishings were not, and, as such, the homeowners wanted to use those pieces along with some from their Raleigh home. "I had a lot of furniture, and I didn't want to get rid of it all," says the homeowner. "Liz was so great at revamping the pieces." A large French yellow-oak armoire was lacquered in a soft gray, instantly updating it, while a chair in an ultra-traditional seersucker fabric was reupholstered in a more modern gray-and-white stripe. "Many of their preexisting pieces were on the traditional side, so we went on a sourcing hunt to find modern, durable, and elevated fabrics that complemented the frames," says Goldberg. The combination of updated traditional pieces with more modern additions like the lighting by Visual Comfort above the kitchen island or the beaded chandelier by Ro Sham Beaux in the breakfast area resulted in a more contemporary feel to the once shabby-chic beach cottage.

In addition to opening up and modernizing the entire home, the kitchen was one of the main focuses of the makeover, as the homeowners love to cook and entertain. Because the couple was downsizing, every inch of the home needed to function, and the kitchen was originally too



With no formal dining room, the breakfast area and the kitchen island became the main dining and entertaining areas. Goldberg repurposed several pieces from her client's Raleigh home, such as the sideboard and the artwork. The beaded chandelier is by Ro Sham Beaux.





Goldberg installed three sconces by Visual Comfort above the doorway in the living room to provide additional lighting and to draw the eye back to the architectural detail in the long room. She lacquered the homeowners' existing armoire in a soft matte gray, Benjamin Moore Ice Age, giving it a modern finish.

OPPOSITE: After removing the existing fireplace in the den, the homeowners wanted to add another somewhere else in the home. Goldberg designed one covered in a square tile by Clé for the living room. The custom coffee table is by Aronson Woodworks and the loveseats were the homeowners' own; Goldberg reupholstered each in a Duralée fabric.



cramped to cook and entertain. “We added new appliances, raised countertops, updated plumbing, tile, flooring, and lighting—really the whole shebang—to infuse new life into this space and make this house a home,” says Goldberg. The couple, who love to read and relax while drinking a cup of coffee in the morning, requested a place to sit and enjoy the morning sunrise. “We created a reading nook at the end of the island by incorporating big cozy reading chairs in the front of the kitchen by the windows, as this is where the best morning sunlight

shines through,” says the designer. “This doubles as a great space to enjoy an afternoon cocktail!”

The homeowners now live in their beach house full-time, loving every inch of what Goldberg designed for them. “The only thing we had done in thirteen years was paint the home,” says the homeowner. “Liz came in and completely revamped it, making it feel so modern and cozy and relaxing. Liz truly made this home so enjoyable that we decided to move here full-time. We absolutely love it.” ♦

WOODY'S

FURNITURE




CRAFTED IN RED OAK & RUSTED HICKORY

AMISH CRAFTED HICKORY GROVE COLLECTION

NORTH CAROLINA'S LARGEST SELECTION OF AMISH CRAFTED CUSTOM FURNITURE

	REGULAR SALE PRICE	NOW
King Size Bed	\$2,039	\$1,795
Queen Size Bed	\$1,739	\$1,595
Tall Dresser	\$3,229	\$2,795
Chest of Drawers	\$2,469	\$1,795
2-Drawer Nightstand	\$1,099	\$895
Beveled Mirror	\$639	\$495
LIMITED QUANTITIES LIMITED TIME OFFER		

835 Hwy 64 W | Apex, NC | 984-229-7566
woodysfurniturestores.com  M-Sat 10-6 Sun 1-5



COURTESY OF BUDGET BLINDS

RESOURCES

COLOR ME HAPPY

KITCHEN & BATH GALLERIES HAS THE SCOOP ON
THE LATEST COLOR TRENDS AND MORE.

WRITTEN BY LEE RHODES



Today's kitchens face a lot of expectations. Once mere cooking workspaces, they have evolved to be the home's central hub, the place where life happens. To say that the kitchen is the heart of the home may sound cliché, but it's true.

According to Virginia Gest, showroom manager of Kitchen & Bath Galleries, a full-service kitchen and bath showroom, "People are investing in kitchen spaces not only for their own enjoyment, but also because it has been shown to heavily increase home resale value. Everyone wants to hang out in the kitchen, cook, eat, do homework, sip coffee."

Since the kitchen sets the tone, it's important to know what colors work best and are on trend. As Gest explains, "This year is all about eye-catching colors, with a predominance of greens and blues offset with neutral hues. Specifically, lighter or darker greens paired with light natural oaks, or natural pecan cabinetry with a ceruse finish, create pizzazz. Similarly, navy blue meticulously set against white invokes a classic nautical look, especially when combined with warm brass or bronze hardware."

When trying to achieve a lighter and brighter kitchen, more delicate shades of green or blue opaque cabinetry are ideal.

PHOTOGRAPHY BY BOB FORTNER

“THIS YEAR IS
ALL ABOUT EYE-
CATCHING
COLORS, WITH
A PREDOMINANCE
OF GREENS AND
BLUES OFFSET WITH
NEUTRAL HUES.”

—VIRGINIA GEST



Alternatively, bolder colors are being incorporated into larger kitchens and those with more modern designs, or to anchor a space, such as when used in an island. “Luckily, these days there aren’t many rules,” says Gest.

It’s a good thing, because that means it’s acceptable and even popular to embrace the nostalgia of green cabinetry. “A cool mint green, pistachio, or avocado green can take you back to the 50s with a straight midcentury vibe, or an emerald-green kitchen with pretty, shaker-style cabinetry can take you to the country,” explains Gest.

It’s ironic that green, while nostalgic, also reflects revitalization and optimism for the future, something sorely needed after the pandemic. And as more people are working from home, they want their spaces to be as relaxing as possible. Shades of green and blue fit the bill, with green in particular having strong associations with nature and creating a sense of tranquility. Other tranquil options? Natural walnut and maple wood stains, live-edge open shelving, organic-looking countertops of natural stone, and warmer tones in hardware.

Speaking of, honey bronze and midcentury brass hardware not only add panache to kitchens, but they are on trend. Gest explains that glass and acrylic knobs provide an elegant nod to the past and can easily be incorporated into smaller spaces, such

as a butler’s pantry or beverage center. Homeowners are also loving the warm undertones of polished nickel hardware.

Today’s hardware options, from farmhouse chic to modern industrial, transitional and contemporary to grandmillennial, create opportunities for designers and homeowners to mix and match styles and finishes, making each space uniquely reflect personal preferences. “Hardware is the jewelry of the space and finishes the look,” concludes Gest. ♦





MAX HUGO

Interior Design
EST. 1988

EFFORTLESSLY INSPIRED INTERIOR DESIGN

Custom Window Treatments

New Construction | Renovation & Remodeling | Decorating | Design Consultations

(919) 806-3638 | FOLLOW US @MaxHugoInteriors | MAXHUGOINTERIORS.COM

ARTSOURCE

FINE ART & FRAMING

Photo: Laurey Glenn

Artist: Becky Denmark



4421-123 Six Forks Road, Midtown Raleigh
Tuesday - Saturday 10:00 to 6:00



Design: Southern Studio

Artist: Amy Abig

www.artsourcefineart.com
919.787.9533



Amalia

FERGUSON
Bath, Kitchen & Lighting Gallery



BRING YOUR VISION TO US

The experts at Ferguson Bath, Kitchen & Lighting Gallery are here to help create a home that's as extraordinary as you are.

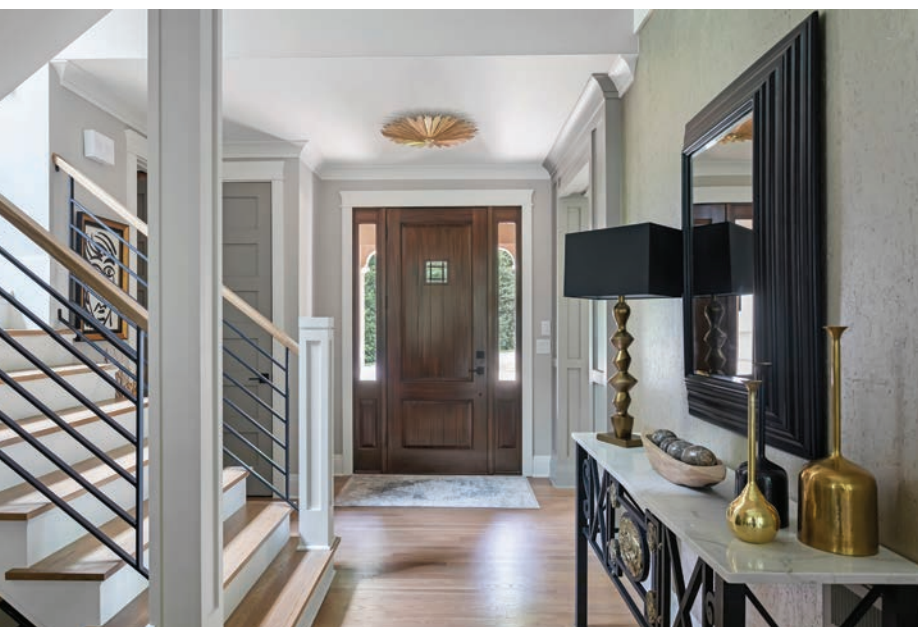
Any project, any style, any dream—bring your inspiration to Ferguson Bath, Kitchen & Lighting Gallery. Visit build.com/ferguson to schedule your personalized showroom experience today.

YOUR LOCAL SHOWROOM:
RALEIGH

AN *INSPIRED* AGENDA

BETSY BARDI'S TURNKEY APPROACH TO DESIGN CATAPULTS INTERIORS FROM "NICE" TO "WOW."

WRITTEN BY LEE RHODES



Bold. Innovative. Game-changing.

These are easy descriptors of interior designer Betsy Bardi's work, and they are the hallmarks of her visionary approach. Bardi and her team at Bardi Designs are not merely focused on updating predetermined spaces, but rather on the bigger picture, recognizing that every detail, from the bones of a home to furnishings like ottomans and headboards to the very last accessory, is important.

"I am a strong believer that things like crown molding and the fireplace detail in a space are just as important as the pillows on the sofa," she says.

Freedom to shape each space in this way creates atmosphere and, ultimately, magic. And to that end, Bardi and her team have a profound impact on her clients' homes. Encompassing interior architecture, construction detailing, and interior design is a strategy that separates Bardi from her competition.

After ten years in Raleigh and almost twenty years in the industry, Bardi's team recognizes the importance of construction detailing. While the term may sound utilitarian, it's actually an essential part of creating the entire vision for a home, and it includes choices such as crown molding, interior door designs, tile, millwork design like wainscoting details, staircase balusters, plumbing, and more.

In addition, explains Bardi, "Ceiling heights or details such as added beams, recessed ceiling trays or architectural paneling, window sizes, and interior door heights all evoke a feeling in a space, and we consider all of these details during the construction process." To get it right, Bardi Designs utilizes



PHOTOGRAPHY BY CATHERINE NGUYEN



“I AM A STRONG BELIEVER THAT THINGS LIKE CROWN MOLDING AND THE FIREPLACE DETAIL IN A SPACE ARE JUST AS IMPORTANT AS THE PILLOWS ON THE SOFA.”

—BETSY BARDI

3D imaging. “There is nothing quite like seeing your space completed before you order the first selection,” she adds.

Illuminating these selections are many types of lighting options, including large-scale lighting, moody lighting, art lights, step lighting, and under-cabinet lighting. “Lighting is a secret weapon in the design world,” says Bardi. “It is one of the best ways to achieve the ‘wow’ factor for our clients.” As an example, Bardi might use architectural uplighting recessed into the floor to wash against a wall. The indirect light source will accentuate the wall’s texture and create a cozy, moody ambience, particularly in the evening.

To stay current on ever-changing design styles, Bardi and her team not only attend High Point Market regularly for

inspiration, but they also have Vendor Therapy Days, where they review new, cutting-edge vendors and spend time with current vendors to hear more about new product lines. This feeds their creative souls, allowing them to brainstorm new and exciting ideas for client projects. Finally, Betsy loves to travel and finds trips to Europe, in particular, to be wonderful opportunities to procure interesting pieces for clients and to embrace her “outside the box” design approach.

Bardi Designs is currently working on opening a new studio, which will be located at 523 South West Street in Raleigh. Bardi and her team are ready for the move and excited to welcome clients to the new space before the end of 2022. ♦

save the date

Sept
16-17
2022



2022 *Chair*ity

CELEBRATING HOME

*a curated collection of new, vintage, and reused home furnishings re-imagined by our community's best interior designers. Whole living spaces and re-imagined chairs will be on display for a ticketed, multi-day event to raise funds for **The Green Chair Project** to provide beds for children in need and fully equipped, sustainable homes to families exiting homelessness.*

CONTACT Rae Marie Czuhai
raemarie@greenchair.org
for more info

**FOR SPONSORSHIP
INFO PLEASE SCAN**



Tickets on Sale August 1st



AH Always Home
FURNITURE CONSIGNMENT

4221 GARRETT ROAD — DURHAM, NC 27707
919.401.0124
ALWAYSHOMECONSIGNMENT.COM



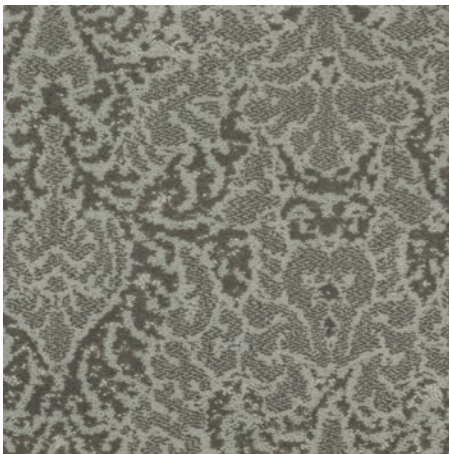
ELEVATE YOUR SPACE



alliance of
INTERIOR
DESIGNERS

www.aidtriangle.org

Nothing completes the design of a room like a beautiful, custom-bound rug.
With more than 1,700 color options to choose from, you are sure to find the right option for your home.



Karastan[®]
est. 1928

SHOP OUR WIDE SELECTION OF FLOORS IN-STORE  OR ONLINE 

18
MONTHS
SPECIAL FINANCING AVAILABLE

OUR CUSTOMERS LOVE US!



4.9 OUT OF 5 STARS

Brentwood
FlooringAmerica.

BRENTWOODFLOORINGAMERICA.COM

Raleigh
4600 Paragon Park Road
919-872-2775

Cary
207 East Chatham Street
919-461-0441

CELEBRATING *HOME*

REIMAGINED CHAIRS, FURNISHINGS, AND ONE-OF-A-KIND FINDS ARE ON DISPLAY IN DESIGNER-CREATED ROOMS AT THE GREEN CHAIR PROJECT'S ANNUAL CHAIRITY FUNDRAISER.

WRITTEN BY DANA W. TODD

Where there is great need, someone must rise to the occasion. The champion in this case is The Green Chair Project, an organization that takes donated home furnishings and home goods and reimagines them to furnish homes for families in Wake County. “Everybody needs beauty as well as bread, places to play in and pray in,” said writer and naturalist John Muir. It is a fitting description for the work Green Chair does. The non-profit organization is expanding its annual fundraising event, 2022 Chairity: Celebrating Home, to address the increasing needs of families living without basic essentials. This year’s event takes place September 16–17.



“WE ARE IN THE BUSINESS
OF TURNING HOUSING
INTO HOMES.”

—JACKIE CRAIG

“This ten-year anniversary event is bigger and better,” says Green Chair CEO Jackie Craig. “This is our tenth year hosting interior designers who will redesign donated chairs to be auctioned off to help support our mission of providing fully equipped households for families trying to break the cycles of homelessness, domestic violence, and other hardship situations such as being a refugee. We also have added an exciting new showroom of twelve different fully curated and designed rooms by some of the area’s most talented interior designers. The public will have a chance to shop these rooms and products supplied by many companies in the home furnishings industry.”

Shoppers attending the two-day event can view these professionally designed rooms—from bedrooms to game rooms to dining rooms and everything in between—featuring both designer-curated furniture and new home goods as well as repurposed donations from Green Chair’s showroom. “Each designer creates a story about the room being designed,” Craig says, “whether that’s a beach cottage or a farmhouse-chic living room.”

The need for furnishings and basic necessities that support healthy and sustainable living has increased greatly post-pandemic. “We are serving families at record numbers, furnishing over thirty households per week where in recent years we were furnishing thirty per month,” Craig says. The increased need is the driving factor in Green Chair’s decision to expand its annual fundraiser into a legacy event. Craig is especially proud that proceeds from 2022 Chairity will also increase the number of new beds the organization can provide to children who don’t have a bed of their own through its



Sweeter Dreams program. “There are six thousand children in Wake County without a bed who are sleeping on the floor. Everyone deserves to sleep in a bed,” she says.

“Every part of a home—a table and chairs to share a meal, a lamp to read a nighttime story, a chair to sit and rest after a long day, and a bed to rest a weary head—is practical, functional, beautiful, and feeds souls with dignity. We are in the business of turning housing into homes.” ♦



Home & Garden Landscapes™

Creative Landscaping Solutions for Fine Triangle Properties Since 2002



CREATIVE LANDSCAPE DESIGN & INSTALLATION • PRIVACY SCREENING SPECIALISTS • BACKYARD OASES & RETREATS
LANDSCAPE RENOVATIONS & RESTORATIONS • PATIOS, WALKWAYS, FIRE PITS & OUTDOOR LIVING AREAS
SWIMMING POOL LANDSCAPES & PRIVACY ENHANCEMENTS • MATURE JAPANESE MAPLES, SHADE & ORNAMENTAL TREES
BLOOMS & COLOR FOR ALL FOUR SEASONS

HOMEANDGARDENLANDSCAPES.COM • 919-801-0211



LARGE WOODED HOMESITES | NATURE TRAILS | YOGA PAVILION | STREAM FRONT LOTS



RYAN'S CROSSING

Location:
2062 Manns Chapel Road
Pittsboro, NC 27312

RyansCrossingNC.com

919.815.1132

sales@ryanscrossingnc.com

Sales by United Real Estate Triangle



KEEP YOUR *COOL*

BUDGET BLINDS OFFERS CREATIVE SHADING
SOLUTIONS FOR BOTH INDOORS AND OUT.

WRITTEN BY LEE RHODES

It's that time of year when we're all looking for ways to beat the summer heat.

Window treatments are a tried-and-true solution for filtering out sunlight (and thus heat), but today's offerings can do so much more. You don't have to sacrifice style for functionality. Budget Blinds, the largest custom window covering provider in the Triangle, goes beyond what its name might suggest: it strikes the ideal balance between aesthetics and practicality.

Locally owned and operated for over twenty-three years, Budget Blinds is incredibly adept at bringing the advantages of custom shading solutions to its clients. As owner Dan Parlin explains, "Window coverings are not only one of the most important design elements of a space, but they also address functional needs like privacy and light control. Our automated window coverings make it easier than ever to control the light throughout your entire home."

Specifically, the days of needing to walk around, window to window, to open and close the slats of your blinds or shutters are over. Now, via app or remote control, you can raise or lower all the shades in your home or in any given room at the same time and in a way that's as easy as turning on the lights.

You can also pre-program your shades to open and lower at set times of the day based on your preferences, whether you're home or not, and you can integrate this functionality with your smart devices. "You can literally say



COURTESY OF BUDGET BLINDS



“OUR AUTOMATED WINDOW COVERINGS MAKE IT EASIER THAN EVER TO CONTROL THE LIGHT THROUGHOUT YOUR ENTIRE HOME.”

—DAN PARLIN

the word and have all of your shades open or close via voice command,” explains Parlin. The benefits of this automation are multifaceted. Not only can you protect your floors and furniture from harmful sun damage, but having the right custom shade solution translates to energy savings on both heating and cooling costs. Additionally, you can enjoy as much natural light as you’d like and maximize your morning view so that you can enjoy the sunrise from your windows when you wake up.

Speaking of the view, your interior view should be a pleasing one, with your window treatments as a focal point. Budget Blinds has hundreds of colors and fabric options, including custom-printed designs, to coordinate the look of your shades with your home’s unique decor. The company’s design consultants can bring these options to you and assist with choosing the perfect solution for any space in your home. You can also choose from different levels of opacity, such as room-darkening material in bedrooms or sheer shades that allow you to maintain your views while still providing heat and UV protection.

Because Budget Blinds recognizes that outdoor living and entertaining are a tremendous part of many people’s lives, they offer exterior shades, shutters, and awnings that make relishing exterior spaces easier than ever. From weatherproof shutters to insect and heat-blocking screens to awnings that provide plenty of shade, you’ll be able to enjoy the outdoors regardless of the season.◆





HEALTHY HYDRATION

BY COURTNEY VAUGHN

HAVE THE HASSLES OF HAULING AND STORING HUGE PLASTIC-WRAPPED PACKAGES OF BOTTLED WATER BECOME A CHORE YOU'D LIKE TO PUT IN THE PAST?

Tired of a standalone water station with cumbersome five-gallon jug replacements that are a struggle to maintain? There is an easier way to provide clean and pure water for your family.

Elkay recently launched ezH₂O Liv, a filtered-water dispenser that can be built into cabinetry and walls virtually anywhere in your home. Whether new construction or renovation, there is a Liv pure water

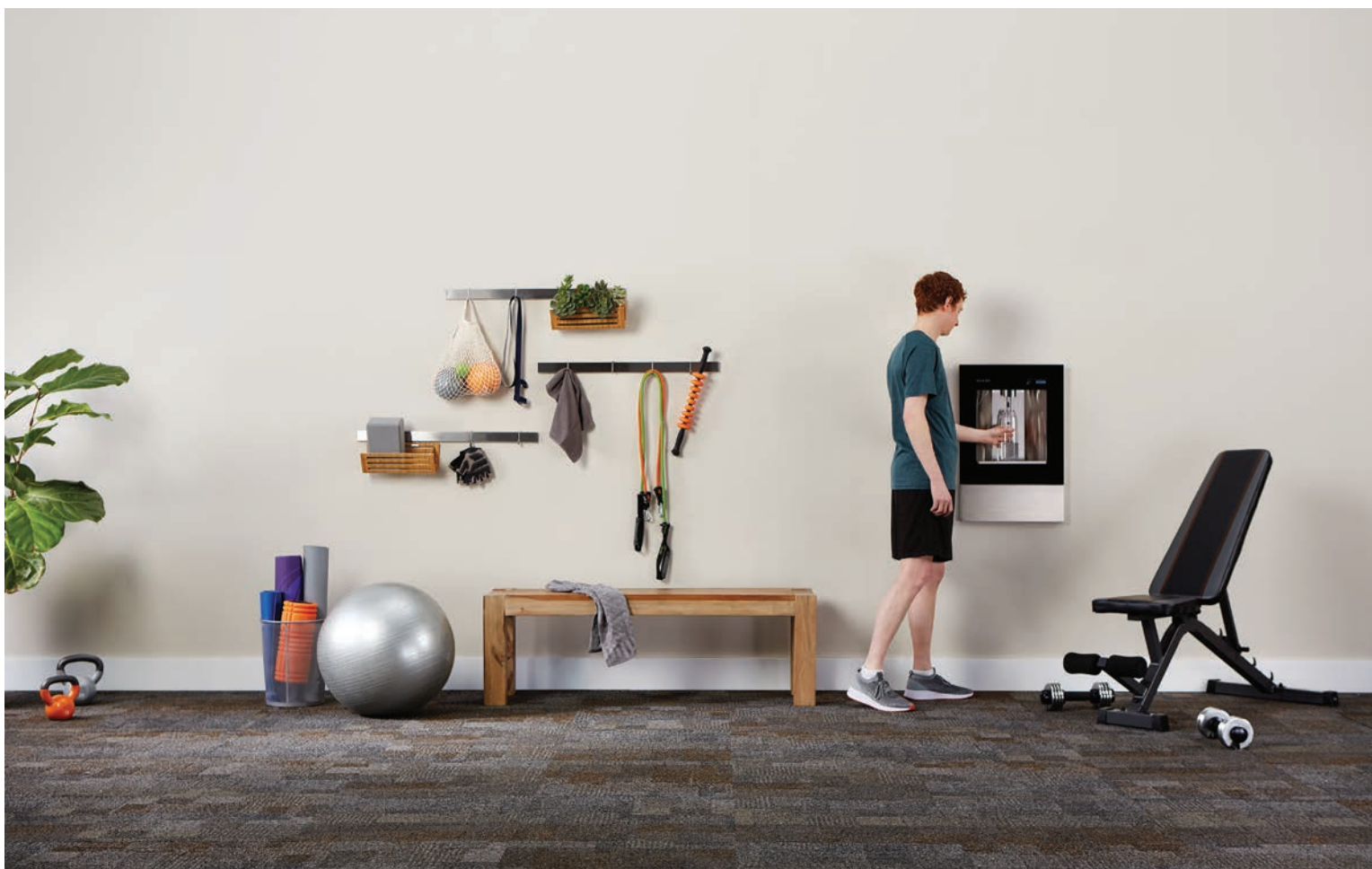
station that can be seamlessly installed into your kitchen, butler's pantry, home gym, rec room, basement, pool house, laundry room, or mudroom for the grab-and-go water needed on the way out the door.

The residential applications are endless, and the exciting part is the list of benefits enjoyed by Liv customers, including:

Monetary savings. Replacing bottled water for a family of four nets a savings of \$11,680 annually based on each family member consuming about four bottles of water per day.



COURTESY OF ELKAY



“THERE IS AN EASIER WAY TO PROVIDE CLEAN AND PURE WATER FOR YOUR FAMILY.”

Reduced environmental impact. Using your own filtered water station reduces the number of bottles going into the landfill each year. For a family of four, that’s diverting 5,840 plastic water bottles per household from the landfill by replacing them with an eco-friendly option.

Better filtration. With a Liv system, you are assured of NSF-certified water filtration that reduces contaminants such as lead and chlorine from your drinking water and provides odorless and fresh-tasting water.

Convenience. What could be easier than filling up your water bottle wherever it is most convenient in your own home?

Improved health. Making water an easy, convenient selection helps family members choose a healthy option instead of sugary drinks.

The Liv’s sleek design fits into any home’s style and comes in two colors, Aspen White and Midnight, both with glass fronts and stainless-steel interiors. The sensor-activated filling station is hands-free, adding even more convenience to the industry’s newest appliance. Since it can be installed flush with cabinetry, it is a low-profile way to enjoy the benefits of either chilled or ambient drinking water filtered free of contaminants.

Elkay’s ezH₂O Liv is found at major retailers and online retailers, and can be specified by your custom home builder, architect, or interior designer. ♦



AGELESS DESIGN

BY JON RUFFY

DESIGN TRENDS COME AND GO, BUT SOME ELEMENTS OF DESIGN THAT RISE IN POPULARITY AREN'T TRENDS AT ALL.

They represent how homeowners live and operate in their homes today and are simply good design practices. A few of the latest luxury kitchen and bath design elements requested by our homeowners have this staying power and are the opposite of trendy ideals. They are timeless and functional principles that are as comfortable in today's homes as they will be on tomorrow's blueprints.

In the bathroom, colorful, bright, and lively wallpaper applications are replacing neutral walls. Think tropical

banana leaf prints and vibrant primary hues of pattern, especially in powder rooms, where the commitment is small. Modern spa-like bathrooms with sleek surfaces and high-end finishes serve as a balance to bold wallpapers that may lean a little traditional. Some of these designs also transition to dining rooms. (To avoid design weariness, it makes sense to inject a dose of personality and color into rooms that may not see everyday use.)

In the kitchen, the emergence of oversized islands is here to stay. Kitchens have naturally become larger and more open over the past few years as homeowners tend to entertain at home more frequently. Oversized islands allow space for all types of functionality: casual dining, appliance and



PHOTOGRAPHY BY DUSTIN PECK



“TIMELESS DESIGN IS DRIVEN BY QUALITY MATERIALS, SO IT’S NO SURPRISE THAT TODAY’S STYLE BASED ON NATURAL MATERIALS HAS STAYING POWER.”

sink integration, and extra storage. Once homeowners have a taste of this level of comfortability and spaciousness, it’s hard to go back. Lighter, brighter natural stone countertops on these oversized islands have staying power, too. “From the earth” elements like stone and wow-worthy wood such as teak, maple, tigerwood, and bamboo look more exotic than traditional butcher block. Modern, clean lines have crept into kitchens, too, and may even be a little futuristic. Think cabinetry sans handles. The modernity of sleek lines and smooth materials mixed with rustic, natural wooden countertops and beams is the new classic style.

I have previously talked about the rise of sculleries, which are essentially second kitchens that are the workhorses of the home. They are now making their way closer to outdoor kitchens, where they are accessible to any form of entertaining the hostess wants to do. Outdoor living has grown exponentially in luxury homes, so it makes sense that sculleries are taking their place as outdoor entertainment helpers.

Timeless design is driven by quality materials, so it’s no surprise that today’s style based on natural materials has staying power. And with the universal influence of technology, modern elements will not take a backseat in whole-home design. ♦



TOP: PHOTOGRAPHY BY JOSH MANNING;
BOTTOM: PHOTOGRAPHY BY ANNA ROUTH BARZIN

JON RUFTY is owner of RUFTY HOMES and can be contacted at 919-460-8550 or JON@RUFTY.COM.



MEET YOU AT THE GALLERY

BY SUNNY SURANA

A COMFORTABLE PLACE TO SIT, GRAB A BEVERAGE, AND MEET WITH YOUR NATURAL STONE SUPPLIER, FABRICATOR, INTERIOR DESIGNER, AND BUILDER—ALL IN ONE PLACE—SOUNDS LIKE A DREAM.

CRS Marble & Granite announces the opening of its new design gallery, making this dream a reality for Raleigh-area homeowners who need an easy solution for their new construction and renovation projects.

The new 6,000-square-foot design gallery is the latest in a line of improvements CRS has implemented in recent

years to enhance the customer experience. In its first phase of development, opening this month, several large custom kitchen and bath displays, as well as a fireplace vignette, will showcase how full stone slabs look when cut to countertop lengths and installed with a variety of edge profiles. This visual display helps homeowners with ideation so they can design the look that fits best into their home's design scheme. Along with countertops, CRS features a range of different hardware, cabinetry, vanities, lighting, and other material finishes to demonstrate how the finished project could look with a full set of complementary products.



COURTESY OF CRS MARBLE & GRANITE



“THE NEW 6,000-SQUARE-FOOT DESIGN GALLERY IS THE LATEST IN A LINE OF IMPROVEMENTS CRS HAS IMPLEMENTED IN RECENT YEARS TO ENHANCE THE CUSTOMER EXPERIENCE.”

Other additions to the design gallery include conference rooms that can accommodate meetings between homeowners and their project team members, from architects to fabricators. There is also a complimentary beverage station to complete the full meeting and conference experience, all just steps away from our warehouse showroom. Other vignettes will be installed in future phases as we expand the design gallery.

Expansion of natural and LED lighting throughout our 60,000-square-foot showroom and the addition of a crane system that quickly and efficiently moves stones for ease of viewing and side-by-side comparison are key components in the customer experience. As one of our customers, Stefanie Hegyi, said, “I’ve recently been to eight granite warehouses in the Triangle area, and CRS was by far the nicest and had the best selection. You could actually see all the slabs

because the warehouse is so well lit, and the music playing was a nice touch. The staff is wonderful and so helpful. CRS is definitely first on my list next time I need granite.”

CRS has expanded the number of natural stones available to its customers. Currently, the warehouse stocks more than four hundred colors of granite, marble, quartzite, quartz, and soapstone. Compare that to the typical big-box retailer’s inventory of ten to fifteen options and other fabricators with twenty choices. Our twenty-seven years in this business has given us the chance to expand quarry relationships that help our customers see all the stones the world has to offer.

Our job, as always, is to help our customers make the most informed decisions that fit their lifestyles. We take care of the details and the collaboration that is a part of your project, which is why we constantly invest in a better educational and shopping experience for our customers. ♦



REAL-TIME DESIGN

BY WILL STROPE

TODAY'S LUXURY LANDSCAPES FOCUS ON BUILDING OPULENT HOME ENVIRONMENTS USING REFINED MATERIALS AND INNOVATIVE DESIGNS.

Outdoor living areas, swimming pools, paver patios, and fire features are just a few of Old North State's additions to the industry, bringing comfort, style, and innovation to Triangle homes.

For nearly forty years, ONS has pushed the industry's envelope to provide a one-of-a-kind atmosphere while struggling to present polished designs in clients' backyards, sharing site plans blowing in the wind, or watching homeowners dodge rain showers or seek shade. After

many of these presentations, a more suitable approach was envisioned. The transition from "tailgate" meetings to a more comfortable environment manifested in the opening of a new downtown Durham sales and design studio. Here, homeowners see their projects come to life through a detailed, virtual rendering of their luxury home investment.

The new Bull City location shares the neighborhood with an architectural firm and a custom flooring contractor, tucked in behind the old Durham ballpark. Despite the pandemic, in the spring of 2020 ONS took steps to secure this space for its clients because of the company's deep confidence in downtown Durham and the need for a more hands-on customer experience.



PHOTOGRAPHY BY CHARLES REGISTER



“HOMEOWNERS SEE THEIR PROJECTS COME TO LIFE THROUGH A DETAILED, VIRTUAL RENDERING OF THEIR LUXURY HOME INVESTMENT.”

Welcoming clients at the door is Jim Frier, ONS director of operations. Frier hosts clients while they experience a 3D walkthrough of their proposed outdoor living space—comfortably and in a professional setting. ONS designers Whitney Morris and Stephanie Carnahan are trained to modify plans and renderings during real-time collaboration. Designers can replace a paver color, swap one tree for another, or rework the pool style, allowing clients to see the results immediately on screen. This impressive visualization technique has been enthusiastically embraced by clients. ONS estimator Joshua Huttles prices projects on-site so that imagination can meet reality.

An additional function of the downtown studio is a showroom, where a myriad of Old North State’s vendors showcase their products for client selection. Clients can view everything from pool finishes to natural stone and concrete pavers to outdoor lighting fixtures. Project materials are chosen



during a selections meeting, where clients spend time honing in on the details with experienced landscape professionals.

Homeowners find the new location to be a premiere place for brainstorming new design ideas and receiving professional assistance on luxury landscape design. ♦

WILL STROPE is a co-owner of **OLD NORTH STATE LANDSCAPE DEVELOPMENT**. The full team can be reached at **919-384-1800**, **ONSLANDSCAPE.COM**, or in downtown Durham at **601 FOSTER STREET**.



BREAK THE RULES

BY DAVID PAYNE

THE NORTH CAROLINA PIEDMONT REGION IS A TEMPERATE PART OF OUR STATE WITH A PLEASANT MIX OF HUMID SUBTROPICAL SUMMER DAYS AND SHORT, MILD WINTERS.

Because we experience all the best each season has to offer, our area is the perfect place to experiment with cultivars native to different planting zones. What better place to mix and match plants native to both colder Northern climates and subtropical Southern species than in a family home in our area that started as a blank slate.

This home had an existing pool but little else to provide privacy or to accentuate the landscape. It was missing hardscaping and landscaping elements to interface between the house and the backyard. To create a cohesive outdoor living experience, we started by adding elements like pergolas, gates, and walkways to tie the house and outdoor living areas together. Then we set about creating a mature privacy screen in a unique way—by mixing both colder climate trees and shrubs with sun-loving palms and other classic tropical plants not usually seen in the same garden beds. With proper selection and placement, it is possible to



PHOTOGRAPHY BY CHIP HENDERSON

“OUR AREA IS THE PERFECT PLACE TO EXPERIMENT WITH CULTIVARS NATIVE TO DIFFERENT PLANTING ZONES.”



grow certain varieties of palms and cold-weather spruce in the same garden for a unique effect.

Mature twenty-two-foot windmill palms mixed with clusters of needle palms and a sprinkling of banana trees surround the pool and soften the edges of surrounding gates and pergolas, creating a lush oasis-type feel to the space. Mixing in five types of heat tolerant spruce trees—blue-green Norway spruce, green Oriental spruce, Fat Albert Colorado blue spruce, blue R.H. Montgomery spruce, and dwarf globosa blue spruce shrubs from Oregon—“cool” the space. They thrive in this environment with the right soil mixture, proper drainage, and a half day of shade. Weeping

Alaskan cedar trees fill in the spaces and are surprisingly heat tolerant. Moveable containers of succulents and cactus sourced from Arizona surround the pool and walkways.

Planting cultivars from different planting zones may go against common knowledge. Considering and understanding the living conditions each type of plant enjoys regardless of whether they are traditionally planted in zone four or zone nine is the key to mixing cold- and heat-loving specimens. Mixing zones creates not only vibrant regional interest and color, but also adds textural contrast that makes your landscape different from anyone else’s. Sometimes it pays to break the rules. ♦

ARTS & CULTURE

SPOTLIGHT



EXPERIMENTS IN FORM

CHARLOTTE RUSSELL CONTEMPORARY

Through August 31

charlotterussellcontemporary.com

Curated by Charlotte Russell, *Experiments in Form* features works by five Triangle-based artists: Sterling Bowen, Abie Harris, Mar Hester, Pete Sack, and Natalia Torres del Valle. Through their own unique process and materials, each artist experiments with spontaneity versus control, interconnectedness, and the process of producing.



SCULPTURE IN THE GARDEN

NORTH CAROLINA BOTANICAL GARDEN

September 18–December 4

ncbg.unc.edu

The thirty-fourth annual *Sculpture in the Garden* highlights the work of local artists and includes sculptures in steel, ceramic, wood, glass, and more. This exhibition takes place entirely outdoors and is open during normal Botanical Garden hours. Take a self-guided tour using the exhibit map and interpretive signs, and meet the artists (with a first chance to purchase sculptures) at the Preview Party on September 17.



PAULI MURRAY: IMP, CRUSADER, DUDE, PRIEST

NORTH CAROLINA
MUSEUM OF HISTORY

Through November 27

ncmuseumofhistory.org

Pauli Murray: Imp, Crusader, Dude, Priest chronicles the life and legacy of the Reverend Dr. Pauli Murray as a significant twentieth-century human rights activist, educator, lawyer, poet, and Episcopal priest. Murray was a key player in the fight for African American, women's, and LGBTQIA+ rights. At the same time, Murray was negotiating their own racial identity, struggling to earn a good living, and seeking more understanding of their sexuality and gender. Through photographs, quotes, audio, and text, this exhibition invites a deeper understanding of twentieth-century American life. Visitors can explore a variety of life-sized photographs and an annotated timeline to learn more about the life of Pauli Murray.

CLOCKWISE FROM TOP: ART BY MIKE ROIG, COURTESY OF NORTH CAROLINA BOTANICAL GARDEN; COURTESY OF CHARLOTTE RUSSELL CONTEMPORARY
MUSEUM OF HISTORY; PHOTOGRAPHY BY ABBY WARNER PHOTOGRAPHY, COURTESY OF CHARLOTTE RUSSELL CONTEMPORARY

DESTIN

*SIMPLIFYING LUXURY NEW HOME LIVING—
GIVING YOU MORE TIME TO ENJOY LIFE.*

TWO AVAILABLE HOMES & TRIANGLE PARADE OF HOMES 2022 ENTRIES



JOIN US THIS PARADE!

OCT. 1-2, 7-9 & 14-16, 2022

NOON - 5PM



DESTINNC.COM | 919.521.4345 | 805 JOURNEYS REST LANE, APEX

LUXURY HOMES IN PROMINENT WEST CARY | CONCIERGE SERVICES | MODERN AMENITIES

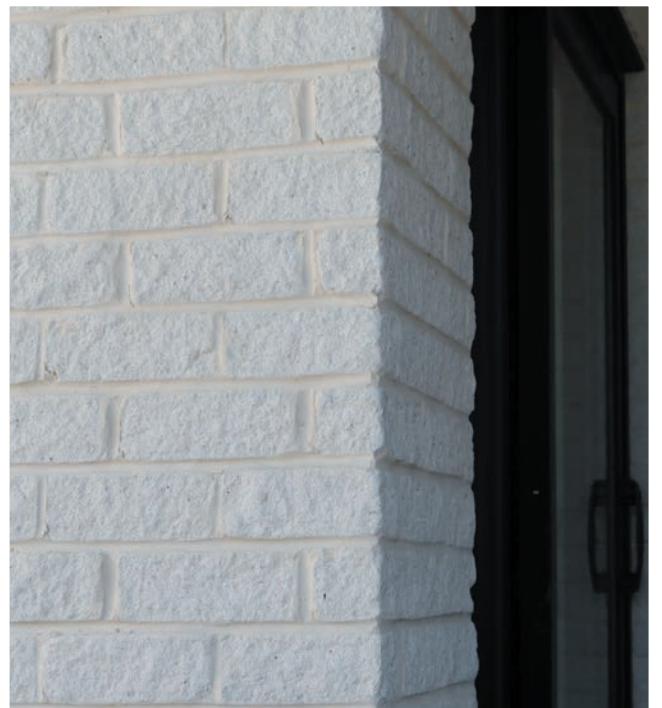
SALES & MARKETING BY HOWARD PERRY AND WALSTON NEW HOMES & LAND



Modern Beauty that Endures.

Whether you're updating the kitchen or designing your dream home, the beauty and versatility of brick remain unmatched. Choose from an array of colors and textures to bring your design dreams to life with a unique, classic finish.

Call **919-828-0541** to speak with your local General Shale Brick representative.





Photography by: Cat Nguyen

FULFORD & COMPANY



CUSTOMIZED HAND CRAFTED LUXURY CABINETRY

CUSTOM MILLWORK RECLAIMED AND NEW WOOD PRODUCTS CUSTOM HOODS
LEATHER BOUND BOOKS BAR TOPS ANTIQUES RECLAIMED DOORS MUCH MORE

High End Furniture Division Launching Soon



252.243.7727

201 LODGE STREET SOUTH, WILSON, NC 27893

FULFORDANDCO.COM

BUSTER+PUNCH
LONDON



R. JACOBS
FINE PLUMBING & HARDWARE

8613 GLENWOOD AVENUE, RALEIGH, NC 27617 919.720.4202 RJACOBSFPH.COM