

Triangle

DECEMBER 2019

# HOMIE

DESIGN & DECOR®

GREAT  
GATHERINGS

*PLUS:*  
DESIGNER  
GIFT GUIDE

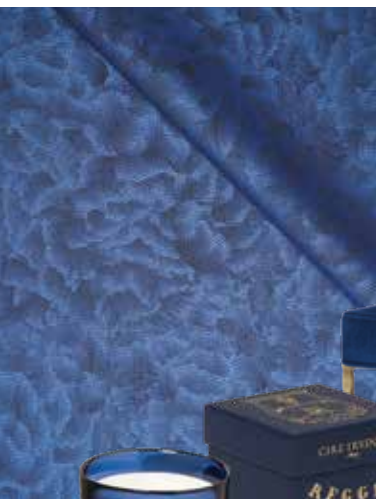
CURATING  
YOUR TABLE



# STARRY SAPPHIRE

A colorful cut of classic clarity and regal refinement.

Produced by Ashley Hotham Cox  
Written by Christina Spratt Spencer



3

2

6



4



5

This velvety blue hue glistens and gleams with a bold and vivacious magnificence seemingly fit for royalty while synchronously approachable. Dazzlingly bright and energetic, it heeds adulation with a juxtaposition of both restrained sophistication and lavish luxury. It's entrancingly effervescent when paired with monochromatic facets of powder, sky, and cerulean blues that graduate to this elegant tone, while jewel-box pairings of emerald, peridot, and garnet are splendid and stately with a noble nod. Contrastingly, canary yellow, coral, and kelly greens playfully evoke a congenial liveliness amidst the dramatic depth of saturation.

1. Designers Zandy Gammons and Liles Dunnigan of The Warehouse 1924 swathed a Raleigh client's piano room in Benjamin Moore Down Pour Blue.
2. Lizzie Fortunato Kerala Earrings / \$390 / [lizziefortunato.com](http://lizziefortunato.com)
3. Jim Thompson Cumulus in Cobalt / to the trade / [jimthompsonfabrics.com](http://jimthompsonfabrics.com)
4. Cire Trudon Reggio Classic Candle / \$115 / [trudon.com](http://trudon.com)
5. Lady Swivel Chair by Susan Hable for Hickory Chair / to the trade / [ahokeltd.com](http://ahokeltd.com)
6. Mr. Brown London Giotti Bar Stool / to the trade / [mrbrownhome.com](http://mrbrownhome.com)